

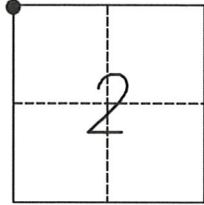
CORNER RECORD

Agency Index 3131

Document Number _____

City of _____ County of MERCED, California

Brief Legal Description NORTHWEST COR. SECTION 2, T.9 S., R.13 E MOUNT DIABLO BASE AND MERIDIAN



CORNER TYPE

Government Corner Control
Meander Property
Rancho Other

COORDINATES (Optional)

N. _____ E. _____
Elevation _____
Units Metric U.S. Survey Foot
Horizontal Datum _____
Zone _____ Epoch Date _____
Vertical Datum _____

Date of Survey SEPTEMBER 10, 2019

Complies with Public Resources Code §§8801-8819
 Complies with Public Resources Code §§8890-8902

PLS Act Ref.: 8765(d) 8771 8773 Other:
Corner/Monument: Left as found Established Rebuilt Pre-Construction
 Found and tagged Reestablished Referenced Post-Construction

Narrative of corner identified and monument as found, set, reset, replaced, or removed:
 See sheet #2 for description(s):

MONUMENT MAY BE DISTURBED DUE TO CONSTRUCTION

SURVEYOR'S STATEMENT

This Corner Record was prepared by me or under my direction in conformance with the Professional Land Surveyors' Act on 6 Nov 2019.
Signed [Signature] P.L.S. or R.C.E. No. 9417

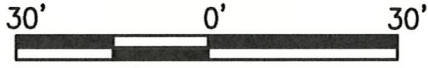


COUNTY SURVEYOR'S STATEMENT

This Corner Record was received DECEMBER 23, 2019 and examined and filed JANUARY 6, 2020.
Signed [Signature] P.L.S. or R.C.E. No. 8664
Title COUNTY SURVEYOR

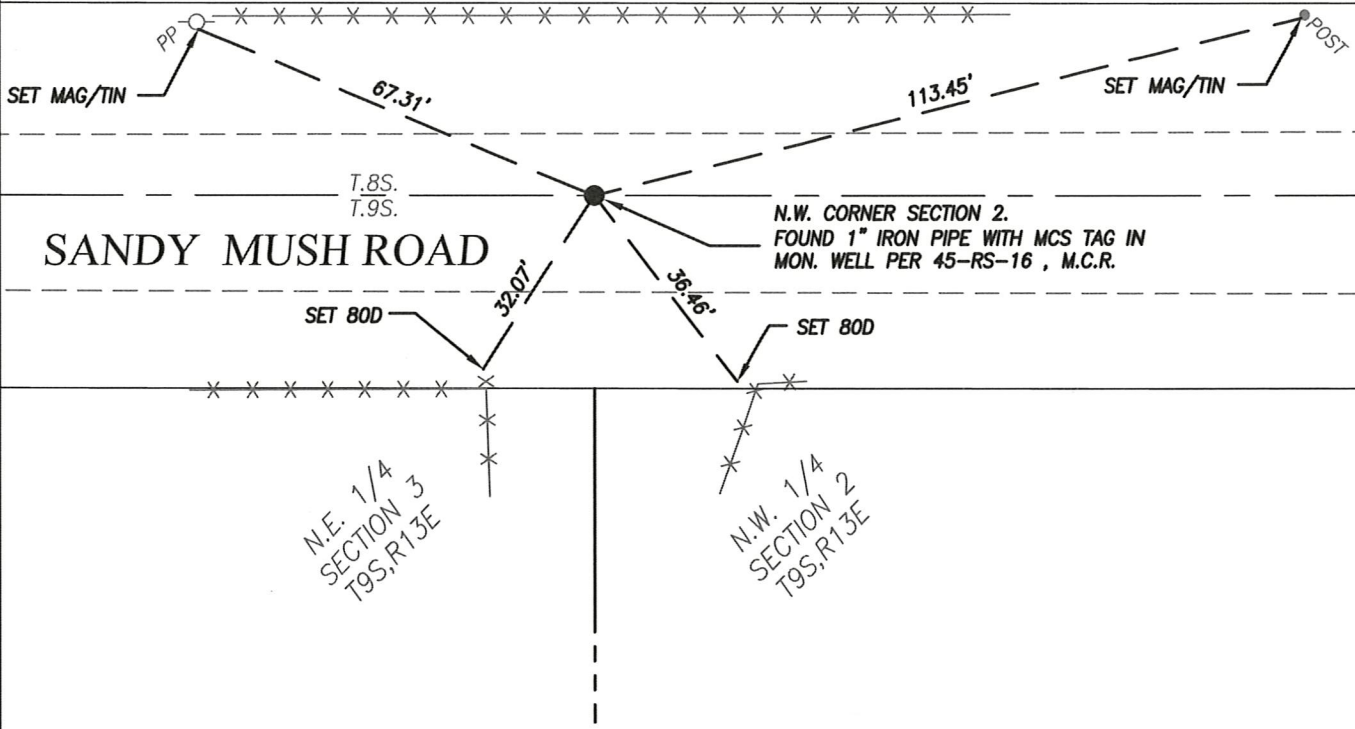


County Surveyor's Comment



SCALE: 1" = 30'

S.E. 1/4
SECTION 34
T8S, R13E



SANDY MUSH ROAD

N.W. CORNER SECTION 2.
FOUND 1" IRON PIPE WITH MCS TAG IN
MON. WELL PER 45-RS-16, M.C.R.

N.E. 1/4
SECTION 3
T9S, R13E

N.W. 1/4
SECTION 2
T9S, R13E