

3123

CC ORDER RECORD

COUNTY OF Merced T 9 S R 15 E Mt. Diablo MERIDIAN CALIFORNIA

CORNER TYPE: GOV'T. CORNER [] MEANDER [] RANCHO [] CONTROL [] OTHER [x]
CORNER IDENTIFICATION — DATE OF VISIT April 21 1976



Northwest Corner of Lot 25, Block 21 (Section 21) of the Bliss Ranch Subdivision on file in Volume 7 of plats at page 46 of the M.C.R.

CORNER — LEFT AS FOUND [x] FOUND AND TAGGED [] REESTABLISHED OBLITERATED CORNER [] REBUILT []

PHYSICAL DESCRIPTION OF CORNER FOUND; EVIDENCE AND METHOD USED TO IDENTIFY OR REESTABLISH

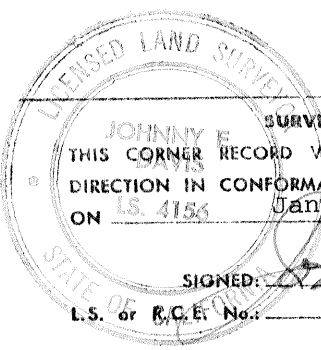
Found 1" O.D. pipe with tag #L.S. 656 0.8 below dirt road.

PHYSICAL DESCRIPTION OF MONUMENTS REBUILT OR PERPETUATED

CALIFORNIA COORDINATE SYSTEM ORDER: FIRST [] SECOND [] THIRD []
STATIONS USED: NGS (USC & GS) [] STATE [] COUNTY [] OTHER [] STATION _____ STATION _____
ZONE _____ ELEVATION _____ NORTHINGS (Y) _____ EASTINGS (X) _____

SKETCH: (Include reference tie or witness points, remarks and topo of area)

- 94.93 South from nail & shiner in railroad tie post.
- 41.18 Southwest from nail & shiner in telephone pole.
- 49.60 South from nail & shiner in fence post.



SURVEYOR'S CERTIFICATE
THIS CORNER RECORD WAS PREPARED BY ME OR UNDER MY DIRECTION IN CONFORMANCE WITH THE LAND SURVEYORS ACT ON L.S. 4156 January 30, 1979
SIGNED: *Johnny E. Davis*
L.S. or P.C.E. No.: 4156

SEAL

COUNTY SURVEYOR'S CERTIFICATE

THE CORNER RECORD WAS RECEIVED _____ 19_____
AND EXAMINED AND FILED _____ 19_____
BY: _____

TITLE: _____
DOCUMENT No. 3123-F

STATEMENT ON BACK OF SHEET YES [] NO []