

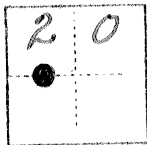
CC IER RECORD

3123-E

COUNTY OF Merced T. 9 S R. 15 E Mt. Diablo MERIDIAN CALIFORNIA

CORNER TYPE: GOVT. CORNER [] MEANDER [] RANCHO [] CONTROL [] OTHER [x]

CORNER IDENTIFICATION - DATE OF VISIT April 3, 19 77



Northwest Corner of Lot 22, Block 20 (Section 20) of Bliss Ranch Subdivision on file in Volume 7 of plats at page 45 of M.C.R.

CORNER - LEFT AS FOUND [x] FOUND AND TAGGED [] REESTABLISHED OBLITERATED CORNER [] REBUILT []

PHYSICAL DESCRIPTION OF CORNER FOUND; EVIDENCE AND METHOD USED TO IDENTIFY OR REESTABLISH

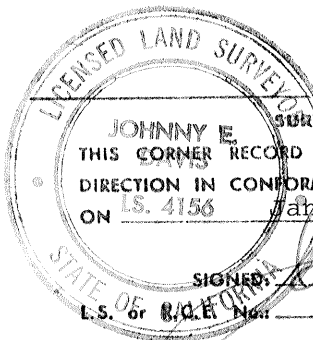
Found 4" x 4" redwood post 0.6 above ground line. Located in East/West fence line.

PHYSICAL DESCRIPTION OF MONUMENTS REBUILT OR PERPETUATED

CALIFORNIA COORDINATE SYSTEM ORDER: FIRST [] SECOND [] THIRD [] STATIONS USED: NGS (USC & GS) [] STATE [] COUNTY [] OTHER [] STATION _____ ELEVATION _____ NORTHINGS (Y) _____ EASTINGS (X) _____

SKETCH: (Include reference tie or witness points, remarks and topo of area)

17.0 West from nail & shiner in 4" x 4" fence post. 13.18 East from nail & shiner in 4" x 4" fence post.



JOHNNY E. SURVEYOR'S CERTIFICATE THIS CORNER RECORD WAS PREPARED BY ME OR UNDER MY DIRECTION IN CONFORMANCE WITH THE LAND SURVEYORS ACT ON 4156 January 30, 19 79 SIGNED: [Signature] 4156 L.S. or R.C.E. No.

SEAL

COUNTY SURVEYOR'S CERTIFICATE

THE CORNER RECORD WAS RECEIVED _____ 19 _____ AND EXAMINED AND FILED _____ 19 _____ BY: _____ TITLE: _____

DOCUMENT No. 3123-E

STATEMENT ON BACK OF SHEET

YES [] NO []