

NO. 31 B

CORNER RECORD

COUNTY OF MERCED T. 9 SOUTH R. 15 EAST Mt. Diablo MERIDIAN CALIFORNIA

CORNER TYPE: GOV'T. CORNER  MEANDER  RANCHO  CONTROL  OTHER

CORNER IDENTIFICATION — DATE OF VISIT APRIL 4 1977



NORTHWEST CORNER, LOT 2, BLOCK 16, (SECTION 16) AS SHOWN ON THE MAP OF THE BLISS RANCHA SUBDIVISION OF FILE IN VOLUME 7 OF PLATS AT PAGE 39, M.C.R.

CORNER — LEFT AS FOUND  FOUND AND TAGGED  REESTABLISHED OBLITERATED CORNER  REBUILT

PHYSICAL DESCRIPTION OF CORNER FOUND, EVIDENCE AND METHOD USED TO IDENTIFY OR REESTABLISH

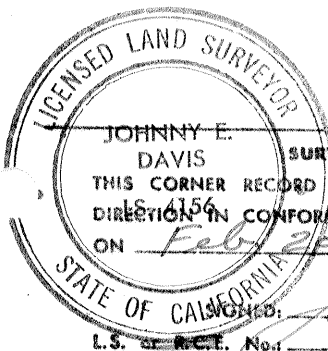
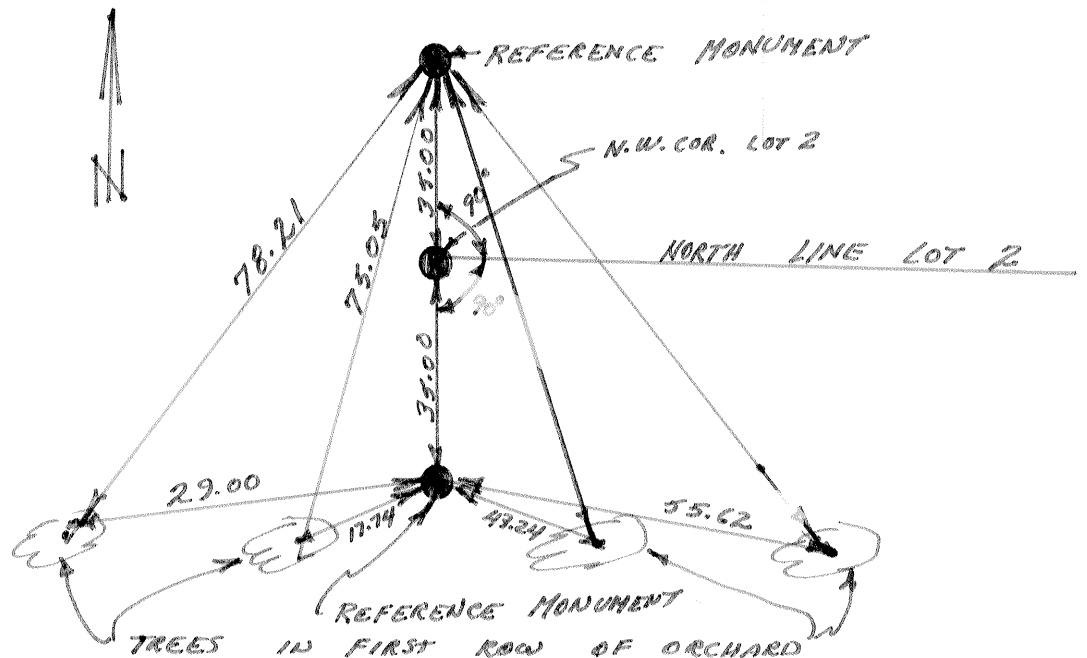
FOUND 4" X 4" REDWOOD

PHYSICAL DESCRIPTION OF MONUMENTS REBUILT OR PERPETUATED

SET 1" O.D. X 28" GALVANIZED IRON PIPES TAGGED L.S. 4156 AT 35.00 FT. NORTH AND 35.00 FT. SOUTH AT 90° TO THE NORTH LINE OF LOT 2.

CALIFORNIA COORDINATE SYSTEM ORDER: FIRST  SECOND  THIRD   
STATIONS USED: NGS (USC & GS)  STATE  COUNTY  OTHER  STATION \_\_\_\_\_ STATION \_\_\_\_\_  
ZONE \_\_\_\_\_ ELEVATION \_\_\_\_\_ NORTHINGS (Y) \_\_\_\_\_ EASTINGS (X) \_\_\_\_\_

SKETCH: (Include reference tie or witness points, remarks and topo of area)



JOHNNY E. DAVIS  
SURVEYOR'S CERTIFICATE  
THIS CORNER RECORD WAS PREPARED BY ME OR UNDER MY DIRECTION IN CONFORMANCE WITH THE LAND SURVEYORS ACT ON Feb 28 1980

SIGNED: Johnny E. Davis  
L.S. or R.C.T. No. 4156

COUNTY SURVEYOR'S CERTIFICATE

THE CORNER RECORD WAS RECEIVED \_\_\_\_\_ 19\_\_\_\_ AND EXAMINED AND FILED \_\_\_\_\_ 19\_\_\_\_

BY: \_\_\_\_\_

TITLE: \_\_\_\_\_

DOCUMENT No. 3112 B

STATEMENT ON BACK OF SHEET

YES  NO