

# CORNER RECORD

COUNTY OF Merced T. 9 S. R. 9 E. M.D.B. MERIDIAN CALIFORNIA  
 CORNER TYPE: GOVT. CORNER  MEANDER  RANCHO  CONTROL  OTHER   
 CORNER IDENTIFICATION — DATE OF VISIT July 7 1983



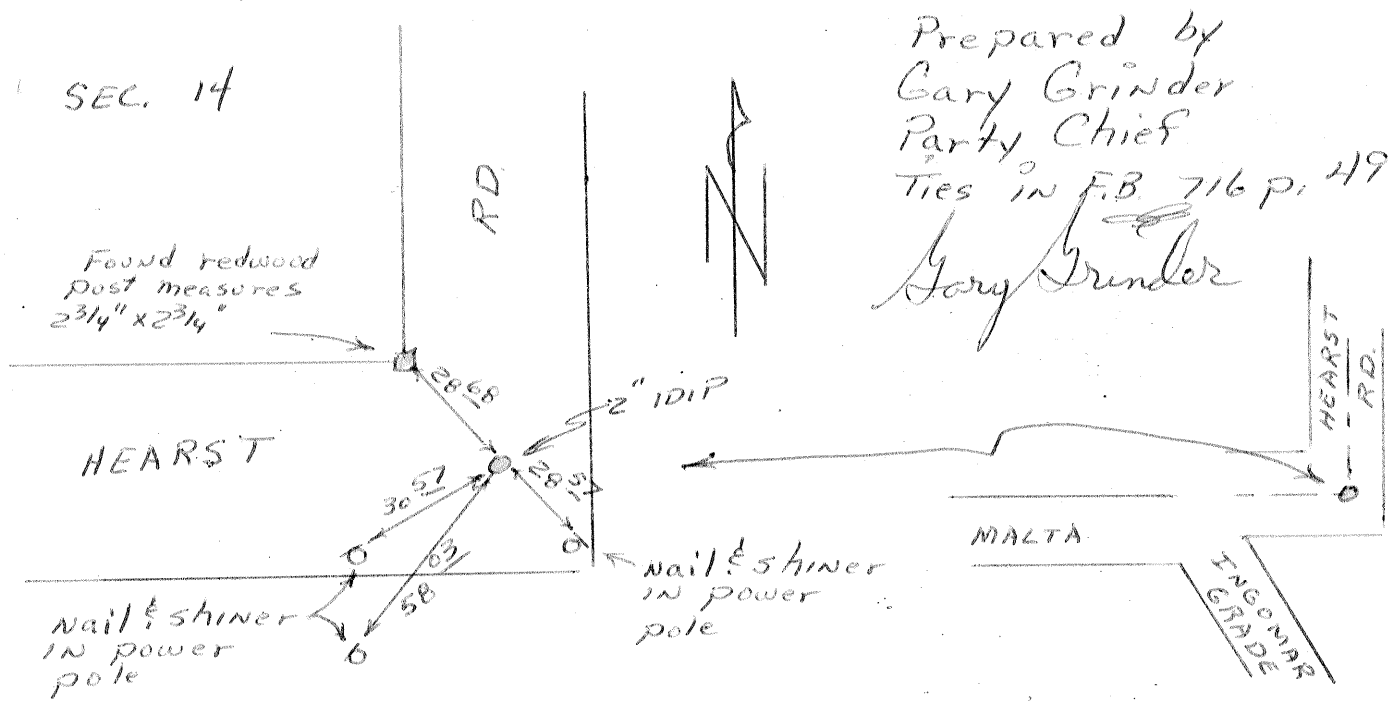
CORNER — LEFT AS FOUND  FOUND AND TAGGED  REESTABLISHED OBLITERATED CORNER  REBUILT

PHYSICAL DESCRIPTION OF CORNER FOUND, EVIDENCE AND METHOD USED TO IDENTIFY OR REESTABLISH  
 Found 1 3/4" inside diameter iron pipe with a copper collar marked "AEC CO RCL", 15" down

PHYSICAL DESCRIPTION OF MONUMENTS REBUILT OR PERPETUATED  
 Replaced 1 3/4" inside diameter iron pipe with a 2" inside diameter iron pipe marked "Co. S.", and tagged "County Surveyor"

CALIFORNIA COORDINATE SYSTEM ORDER: FIRST  SECOND  THIRD   
 STATIONS USED: NGS (USC & GS)  STATE  COUNTY  OTHER  STATION \_\_\_\_\_ STATION \_\_\_\_\_  
 ZONE \_\_\_\_\_ ELEVATION \_\_\_\_\_ NORTHINGS (Y) \_\_\_\_\_ EASTINGS (X) \_\_\_\_\_

SKETCH: (Include reference tie or witness points, remarks and topo of area)



**SURVEYOR'S CERTIFICATE**  
 THIS CORNER RECORD WAS PREPARED BY ME OR UNDER MY DIRECTION IN CONFORMANCE WITH THE LAND SURVEYORS ACT ON \_\_\_\_\_ 19\_\_\_\_\_  
 SIGNED: \_\_\_\_\_  
 L.S. or P.C.E. No.: \_\_\_\_\_

**COUNTY SURVEYOR'S CERTIFICATE**  
 THE CORNER RECORD WAS RECEIVED \_\_\_\_\_ 19\_\_\_\_\_  
 AND EXAMINED AND FILED \_\_\_\_\_ 19\_\_\_\_\_  
 BY: [Signature]  
 TITLE: County Surveyor  
 DOCUMENT No. 3091-D  
 STATEMENT ON BACK OF SHEET YES  NO

SEAL