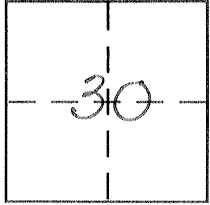


**CORNER RECORD**

Document Number 3050-B  
County of MERCED, California

City of \_\_\_\_\_

Brief Legal Description CENTERLINE MONUMENT INDIANA AVE 1950'± S. OF DENTON LEAK ROAD. T.10S, R.13E SEC. 30



**CORNER TYPE**

Government Corner  Control   
Meander  Property   
Rancho  Other   
Date of Survey 6-7-02

**COORDINATES (Optional)**

N. \_\_\_\_\_  
E. \_\_\_\_\_  
Zone \_\_\_\_\_ NAD27  NAD83   
NAD83 Epoch \_\_\_\_\_  
Elev. \_\_\_\_\_  
Vert. Datum: NGVD29  NAVD88   
Meas. Units: Metric  Imperial

Corner - Left as found  Found and tagged  Established  Reestablished  Rebuilt

Identification and type of corner found: Evidence used to identify or procedure used to establish or reestablish the corner:  
CENTERLINE MONUMENT AT ANGLE POINT FOR INDIANA AVE. 1950'± SOUTH OF DENTON LEAK ROAD LYING IN SECTION 30 T.10S., R.13E., M.D.B. & M. AS SHOWN IN COUNTY FIELD BOOK 710 PG. 38.

A description of the physical condition of the monument as found and as set or reset: FOUND 3/8" BAR IN MONUMENT WELL W/ COUNTY SURVEYOR'S TAG. MAY BE DESTROYED DURING CONSTRUCTION

**SURVEYOR'S STATEMENT**

This Corner Record was prepared by me or under my direction in conformance with the Land Surveyor's Act on July 8, 2002

Signed David D. Heinrichs P.L.S. or R.C.E. No. 7621



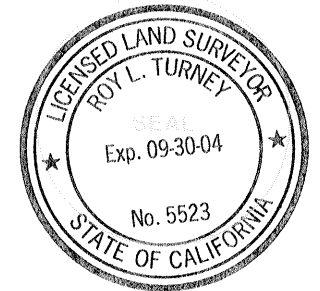
**COUNTY SURVEYOR'S STATEMENT**

This Corner Record was received 7-8-02

and examined and filed 8-8-02

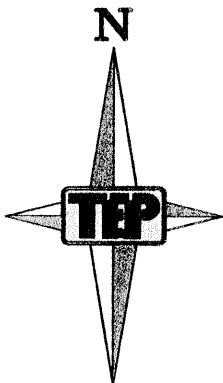
Signed Ray J. Tammy P.L.S. or R.C.E. No. 5523

Title Dep. Co. Surveyor



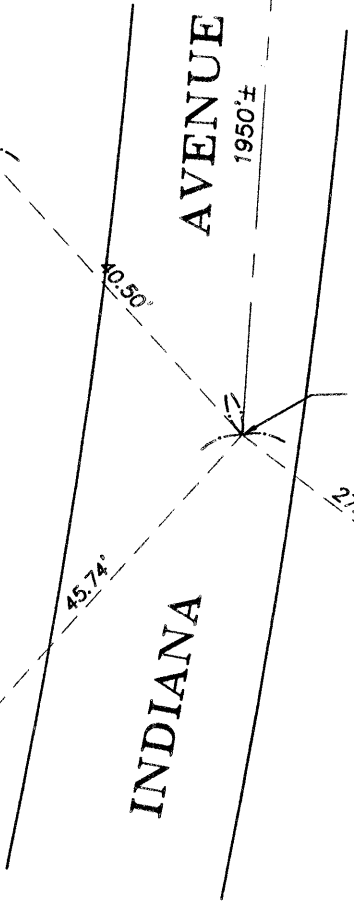
County Surveyor's Comment \_\_\_\_\_

DENTON LEAK ROAD



SCALE 1" = 20'

SET NAIL & TIN  
IN ELECTRICAL  
SERVICE POLE



FOUND 5/8" IRON BAR  
IN MONUMENT WELL

SET 1/2" BAR

SET 1/2" BAR