

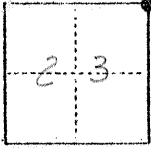
NO. 304

CORNER RECORD

COUNTY OF MERCED T. 10 S. R. 12 E. M. D. B. & MERIDIAN CALIFORNIA

CORNER TYPE: GOV'T. CORNER MEANDER RANCHO CONTROL OTHER

CORNER IDENTIFICATION — DATE OF VISIT JUNE 8 1977



NORTHEAST COR OF SECTION 23

CORNER — LEFT AS FOUND FOUND AND TAGGED REESTABLISHED OBLITERATED CORNER REBUILT

PHYSICAL DESCRIPTION OF CORNER FOUND; EVIDENCE AND METHOD USED TO IDENTIFY OR REESTABLISH

PULLED M.C.R.D. TIES FROM FB. 703, PG. 55 DTD. 10-30-67

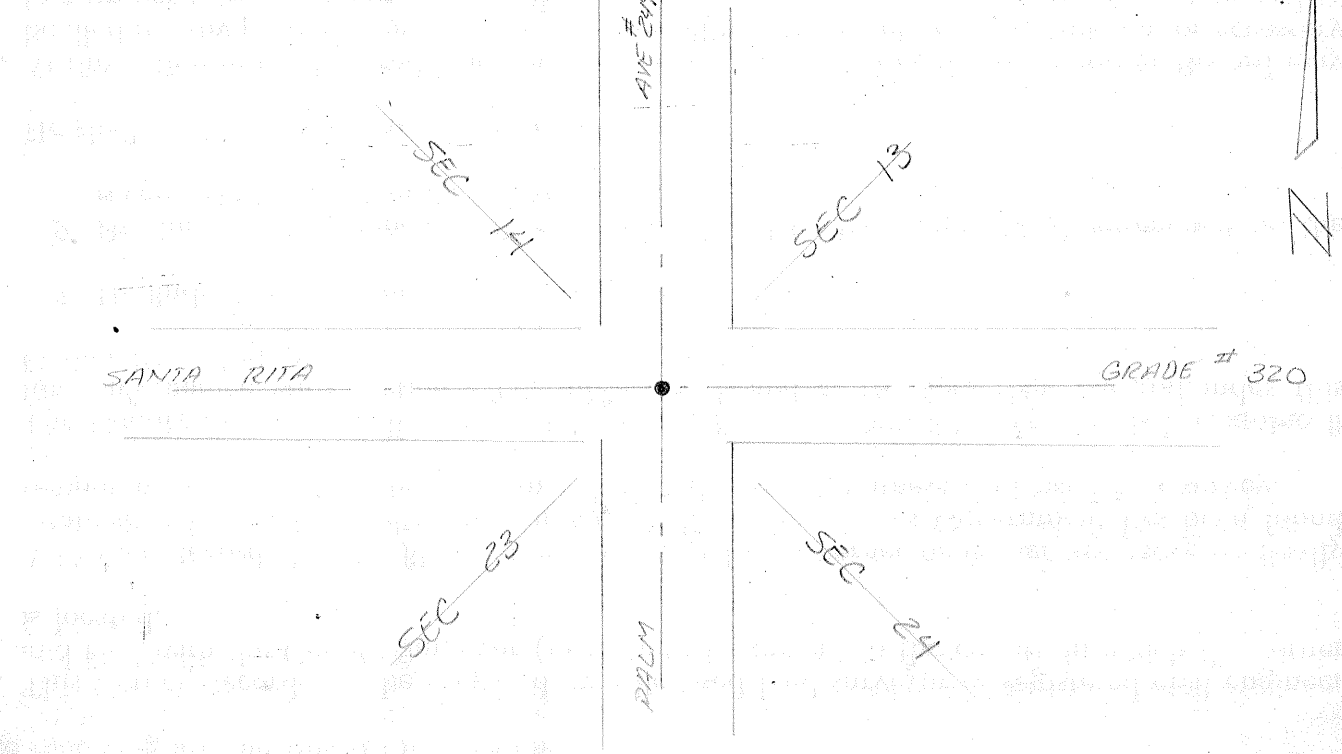
PHYSICAL DESCRIPTION OF MONUMENTS REBUILT OR PERPETUATED

SET $\frac{5}{8}$ " IRON ROD IN SURVEY ENCASEMENT, TAGGED COUNTY SURVEYOR

CALIFORNIA COORDINATE SYSTEM ORDER: FIRST SECOND THIRD
STATIONS USED: NGS (USC & GS) STATE COUNTY OTHER STATION _____ STATION _____
ZONE _____ ELEVATION _____ NORTHINGS (Y) _____ EASTINGS (X) _____

(Fold)

SKETCH: (Include reference tie or witness points, remarks and topo of area)



SURVEYOR'S CERTIFICATE

THIS CORNER RECORD WAS PREPARED BY ME OR UNDER MY DIRECTION IN CONFORMANCE WITH THE LAND SURVEYORS ACT

SIGNED: _____

I.S. or R.C.E. No.: _____

SEAL

COUNTY SURVEYOR'S CERTIFICATE

THE CORNER RECORD WAS RECEIVED _____ 19____ AND EXAMINED AND FILED _____ 19____

BY: _____

TITLE: _____

DOCUMENT No. 3049

STATEMENT ON BACK OF SHEET

YES NO