

CORNER RECORD

COUNTY OF Merced T. 10 S. R. 12 E MDBTM MERIDIAN CALIFORNIA
 CORNER TYPE: GOVT. CORNER MEANDER RANCHO CONTROL OTHER
 CORNER IDENTIFICATION — DATE OF VISIT April 30 1987



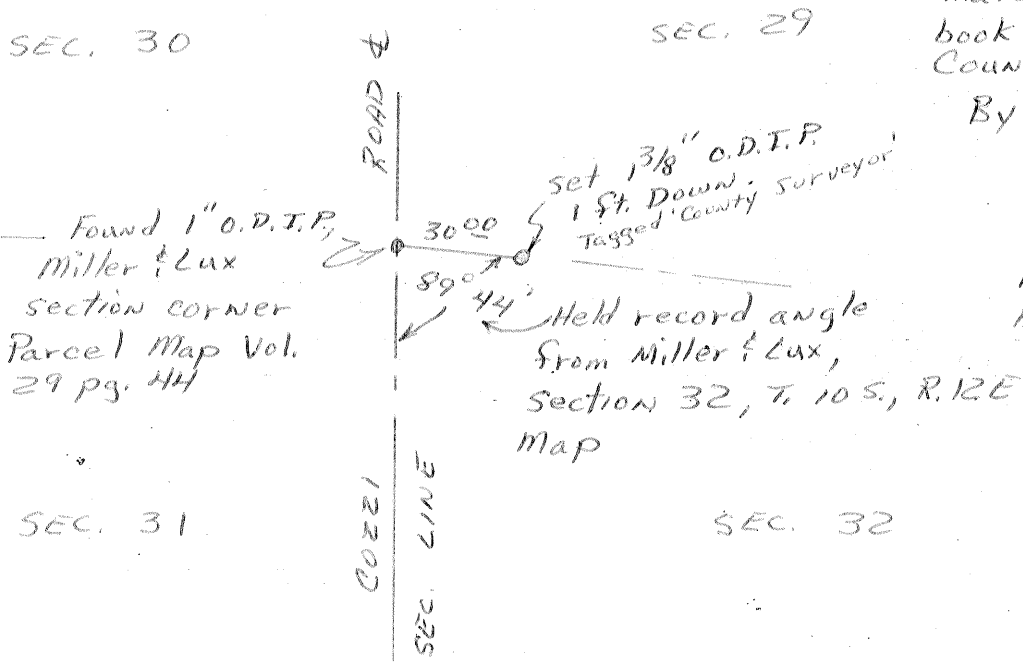
CORNER — LEFT AS FOUND FOUND AND TAGGED REESTABLISHED OBLITERATED CORNER REBUILT

PHYSICAL DESCRIPTION OF CORNER FOUND, EVIDENCE AND METHOD USED TO IDENTIFY OR REESTABLISH
Found 1" outside diameter iron pipe flush with road surface.

PHYSICAL DESCRIPTION OF MONUMENTS REBUILT OR PERPETUATED
Found 1" outside diameter iron pipe flush with road surface
set 1 3/8" outside diameter iron pipe 30°° feet east of monument,
As a witness

CALIFORNIA COORDINATE SYSTEM ORDER: FIRST SECOND THIRD
 STATIONS USED: NGS (USC & GS) STATE COUNTY OTHER STATION _____ STATION _____
 ZONE _____ ELEVATION _____ NORTHINGS (Y) _____ EASTINGS (X) _____

SKETCH: (Include reference tie or witness points, remarks and topo of area)



Material from field
 book 717, pg. 78, Merced
 County Road Department
 By Gary Grinder
 Gary Grinder
 Party Chief
 May 8, 1987

SURVEYOR'S CERTIFICATE
 THIS CORNER RECORD WAS PREPARED BY ME OR UNDER MY DIRECTION IN CONFORMANCE WITH THE LAND SURVEYORS ACT ON _____ 19_____
 SIGNED: _____
 I.S. or R.C.E. No.: _____

COUNTY SURVEYOR'S CERTIFICATE
 THE CORNER RECORD WAS RECEIVED 5-27 1987
 AND EXAMINED AND FILED 5-27 1987
 BY: Roy T...
 TITLE: Dep. Co. Sur
 DOCUMENT No. 3039
 STATEMENT ON BACK OF SHEET

SEAL

YES NO