

CORNER RECORD

COUNTY OF MERCED T. 10 S. R. 12 E MD&M MERIDIAN CALIFORNIA
 CORNER TYPE: GOV'T. CORNER MEANDER RANCHO CONTROL OTHER
 CORNER IDENTIFICATION — DATE OF VISIT April 30 1987



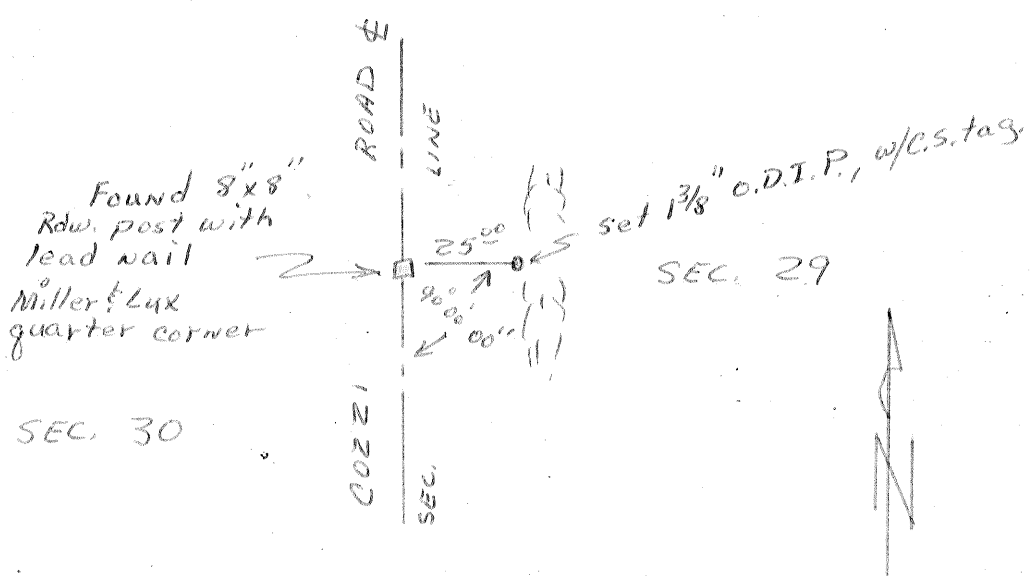
CORNER — LEFT AS FOUND FOUND AND TAGGED REESTABLISHED OBLITERATED CORNER RESULT

PHYSICAL DESCRIPTION OF CORNER FOUND, EVIDENCE AND METHOD USED TO IDENTIFY OR REESTABLISH
Found 8"x8" redwood post with lead nail, 18" down from road surface.

PHYSICAL DESCRIPTION OF MONUMENTS REBUILT OR PERPETUATED
Set 1 3/8" O.D.I.P. with County Surveyor's tag, 25 feet east and 1 foot deep, as witness monument

CALIFORNIA COORDINATE SYSTEM ORDER: FIRST SECOND THIRD
 STATIONS USED: NGS (USC & GS) STATE COUNTY OTHER STATION _____ STATION _____
 ZONE _____ ELEVATION _____ NORTHINGS (Y) _____ EASTINGS (X) _____

SKETCH: (Include reference tie or witness points, remarks and topo of area)



*Material from
 Field Book 717 pg. 78,
 Merced County Road
 Department
 By Party Chief
 Gary Grinder
 Gary Grinder
 May 8, 1987*

SURVEYOR'S CERTIFICATE
 THIS CORNER RECORD WAS PREPARED BY ME OR UNDER MY DIRECTION IN CONFORMANCE WITH THE LAND SURVEYORS ACT ON _____ 19_____
 SIGNED: _____
 L.S. or R.C.E. No.: _____

COUNTY SURVEYOR'S CERTIFICATE
 THE CORNER RECORD WAS RECEIVED 5-27 1987
 AND EXAMINED AND FILED 5-27 1987
 BY: Roy Tom
 TITLE: Dep. Co. Sur.
 DOCUMENT No. 3038
 STATEMENT ON BACK OF SHEET