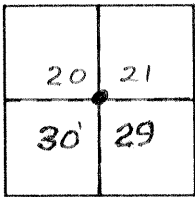


**CORNER RECORD**

Document Number 3037

City of \_\_\_\_\_ County of MERCED, California

Brief Legal Description N.E. CORNER SECT 30, T10S R12E MOBEM



**CORNER TYPE**

Government Corner  Control   
 Meander  Property   
 Rancho  Other   
 Date of Survey JUNE 14, 1990

**COORDINATES (Optional)**

N. \_\_\_\_\_  
 E. \_\_\_\_\_  
 Zone \_\_\_\_\_ Datum \_\_\_\_\_  
 Elev. \_\_\_\_\_

Corner — Left as found  Found and tagged  Established  Reestablished  Rebuilt

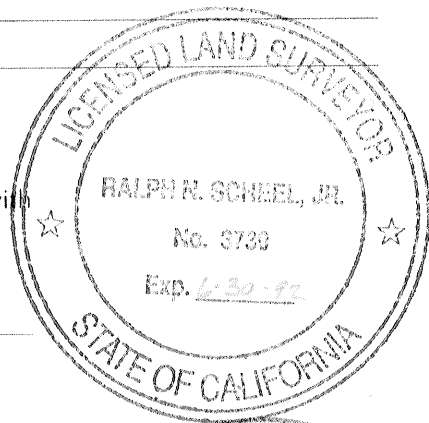
Identification and type of corner found: Evidence used to identify or procedure used to establish or reestablish the corner: REDWOOD POST WITH LEAD PLUG PER STATE HWY MAP 10 MER 152 PG. 17 OF 47

A description of the physical condition of the monument as found and as set or reset: MONUMENT APPEARS IN GOOD CONDITION - DOWN 25' - SET 1" I. PIPE WITH CALTRANS MON. (RED) PLUG

**SURVEYOR'S STATEMENT**

This Corner Record was prepared by me or under my direction in conformance with the Land Surveyors' Act on JUNE 14 1990.

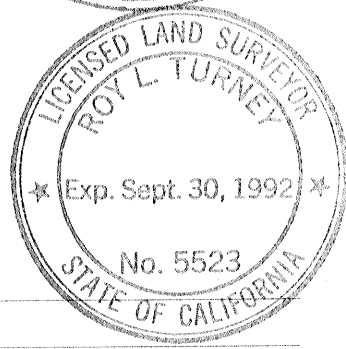
Signed Ralph N. Schuel L.S. or R.C.E. Number LS3730



**COUNTY SURVEYOR'S STATEMENT**

This Corner Record was received August 1990 and examined and filed August 22 1990.

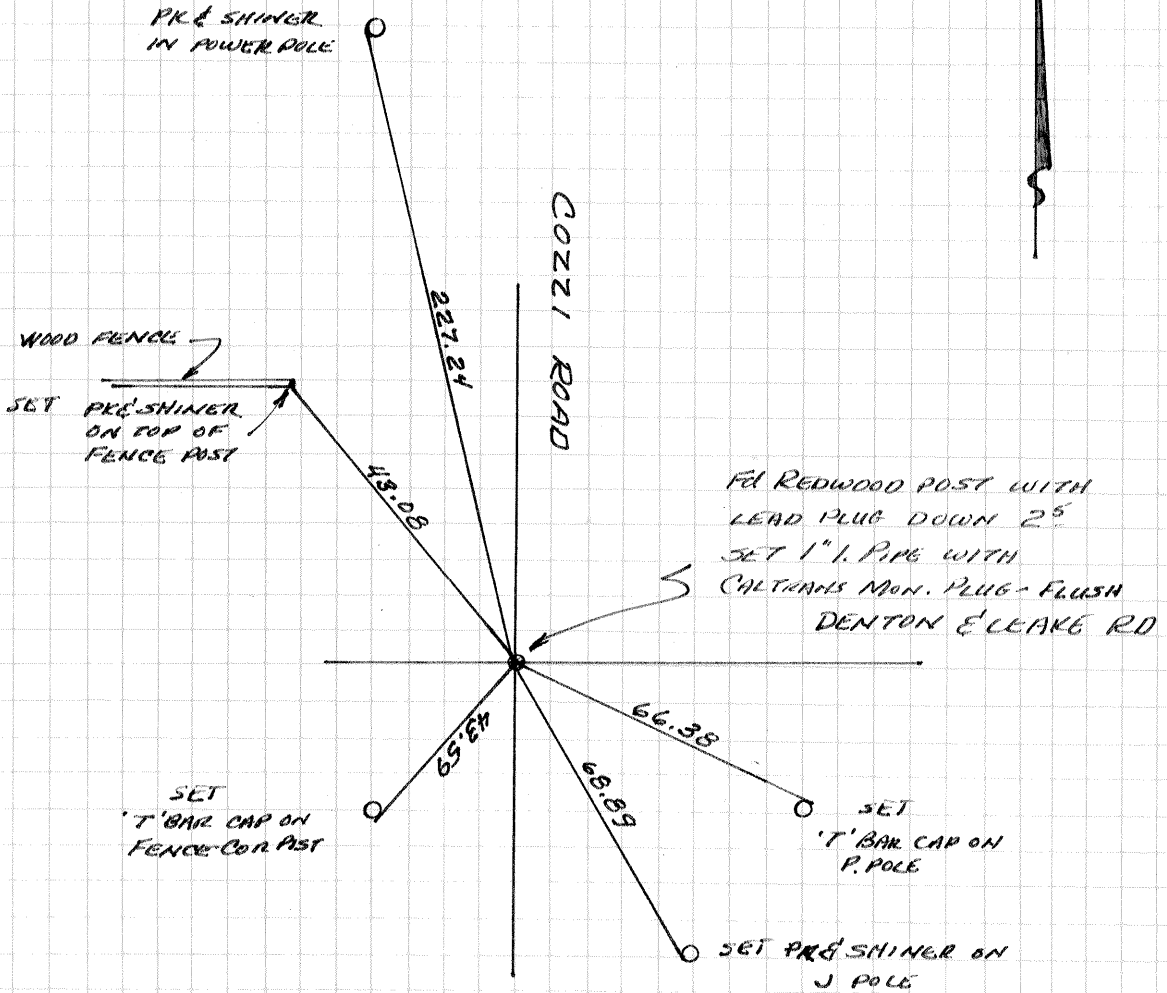
Signed Roy L. Tunney Title Dep. Co. Surveyor



County Surveyor's Comment COR. NO. 3037 OK

19 20  
30 29

TIOS RIZE  
MDB&M



SEE STATE HIGHWAY R/W  
MAP 10 MER 152 Pg 17 OF 47