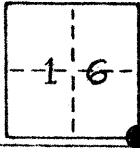


3034

CORNER RECORD

COUNTY OF Merced T. 10S R. 12E Mt. Diablo MERIDIAN CALIFORNIA
 CORNER TYPE: GOVT. CORNER MEANDER RANCHO CONTROL OTHER
 CORNER IDENTIFICATION — DATE OF VISIT December 27, 1978



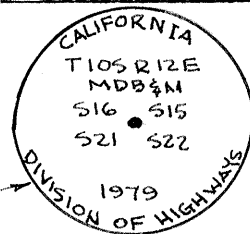
CORNER — LEFT AS FOUND FOUND AND TAGGED REESTABLISHED OBLITERATED CORNER REBUILT

PHYSICAL DESCRIPTION OF CORNER FOUND; EVIDENCE AND METHOD USED TO IDENTIFY OR REESTABLISH

Found H&T; down OS; per State of California Highway Map dated Dec. 1, 1970 for State Highway Route 152, filed with the Merced County Surveyor.

PHYSICAL DESCRIPTION OF MONUMENTS REBUILT OR PERPETUATED

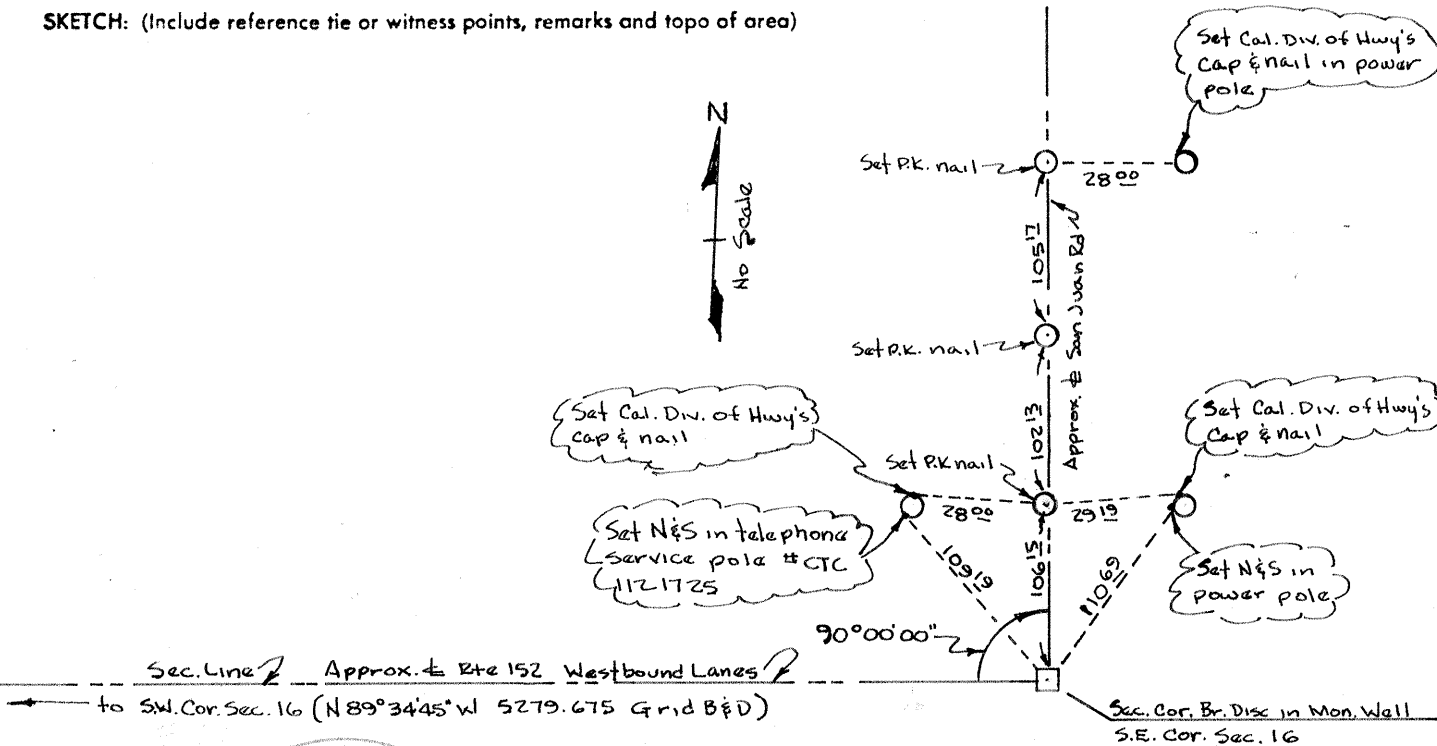
Removed H&T and set 3 1/2" brass disc in concrete at exact location of H&T. Set in Monument Well.



Stamped thus →

CALIFORNIA COORDINATE SYSTEM ORDER: FIRST SECOND THIRD
 STATIONS USED: NGS (USC & GS) STATE COUNTY OTHER STATION _____ STATION _____
 ZONE III ELEVATION _____ NORTHINGS (Y) 201,929.821 EASTINGS (X) 1,955,457.940
 Combined Grid Factor = 0.9999952

SKETCH: (Include reference tie or witness points, remarks and topo of area)



SURVEYOR'S CERTIFICATE

THIS CORNER RECORD WAS PREPARED BY ME OR UNDER MY DIRECTION IN CONFORMANCE WITH THE LAND SURVEYORS ACT ON January 4, 1979

SIGNED: Suzanne K.W. Chen
 R.C.E. No. 12688



COUNTY SURVEYOR'S CERTIFICATE

THE CORNER RECORD WAS RECEIVED _____ 19 _____ AND EXAMINED AND FILED _____ 19 _____

BY: _____ TITLE: _____

DOCUMENT No. 3034

STATEMENT ON BACK OF SHEET

YES NO