

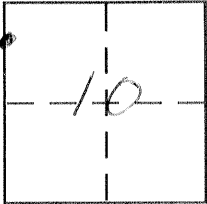
CORNER RECORD

Document Number 3034-13

City of _____

County of MERCED, California

Brief Legal Description CENTERLINE INTERSECTION OF HUTCHINS ROAD & SAN JUAN ROAD



T103, R12E

CORNER TYPE

Government Corner Control
Meander Property
Rancho Other
Date of Survey 6-21-02

COORDINATES (Optional)

N. _____
E. _____
Zone _____ NAD27 NAD83
NAD83 Epoch _____
Elev. _____
Vert. Datum: NGVD29 NAVD88
Meas. Units: Metric Imperial

Corner - Left as found Found and tagged Established Reestablished Rebuilt

Identification and type of corner found: Evidence used to identify or procedure used to establish or reestablish the corner:

CENTERLINE INTERSECTION OF HUTCHINS & SAN JUAN ROAD AS SHOWN ON 89 P.M. 1, M.C.R.

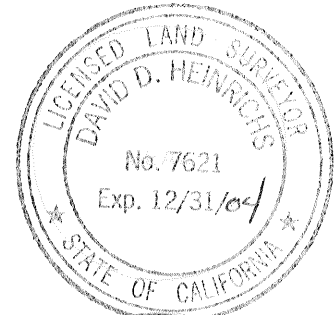
A description of the physical condition of the monument as found and as set or reset: FOUND 4" X 4"

REDWOOD IN GOOD CONDITION. MAY BE DESTROYED DURING ROAD CONSTRUCTION

SURVEYOR'S STATEMENT

This Corner Record was prepared by me or under my direction in conformance with the Land Surveyor's Act on July 8, 2002.

Signed David D. Heinrichs P.L.S. or R.C.E. No. 7621



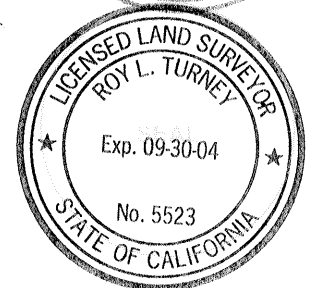
COUNTY SURVEYOR'S STATEMENT

This Corner Record was received 7-8-02

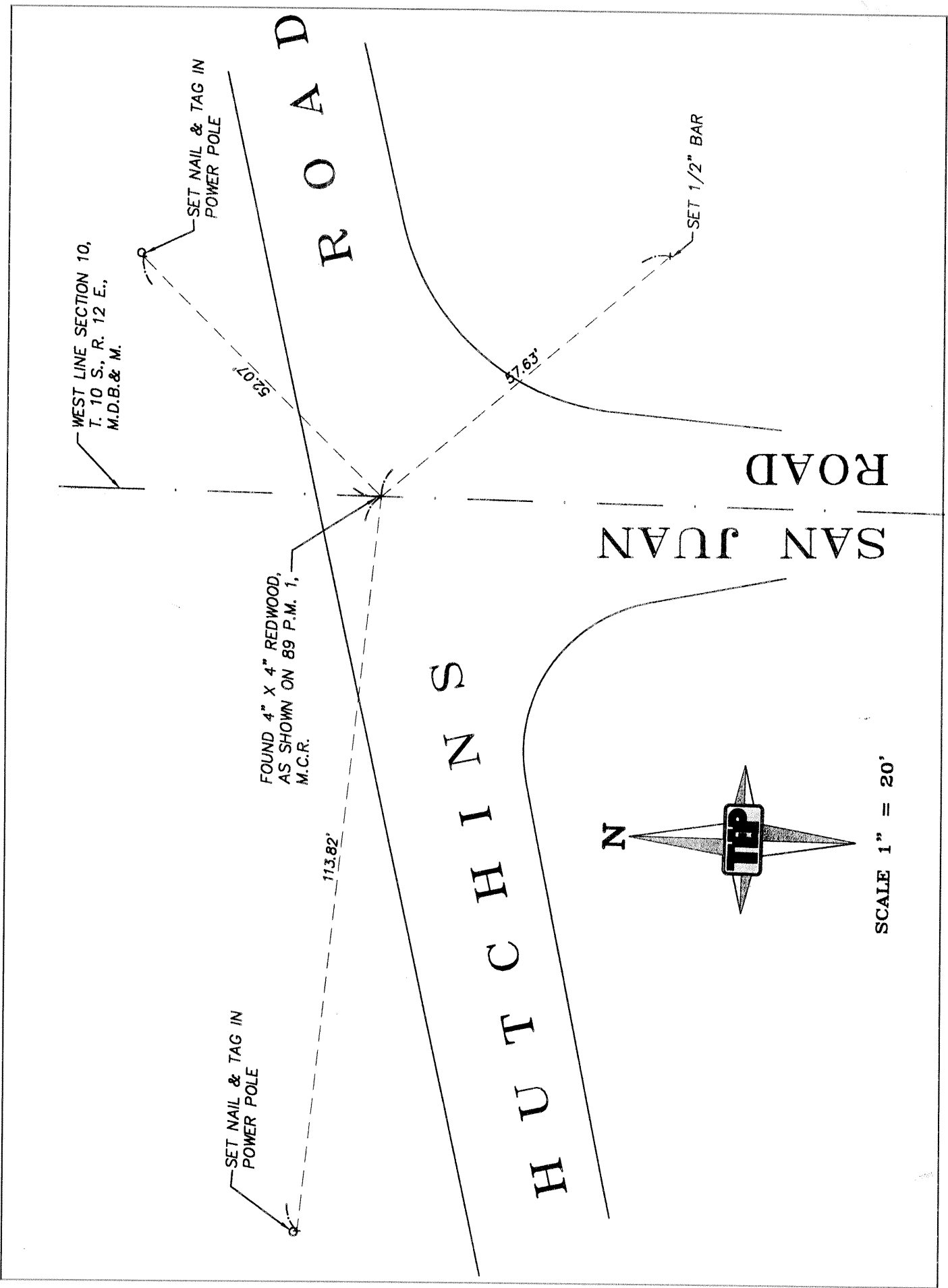
and examined and filed 8-8-02

Signed Roy L. Turney P.L.S. or R.C.E. No. 5523

Title DEP. CO. SURVEYOR



County Surveyor's Comment _____



WEST LINE SECTION 10,
T. 10 S., R. 12 E.,
M.D.B. & M.

SET NAIL & TAG IN
POWER POLE

SET NAIL & TAG IN
POWER POLE

FOUND 4" X 4" REDWOOD,
AS SHOWN ON 89 P.M. 1,
M.C.R.

SET 1/2" BAR

52.07'

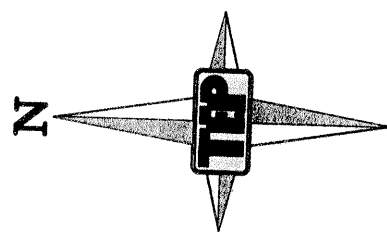
37.63'

113.82'

R O A D

SAN JUAN
ROAD

H U T C H I N S
R O A D



SCALE 1" = 20'