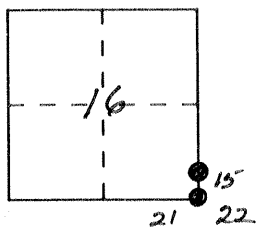


**CORNER RECORD**

Document Number 3034

City of \_\_\_\_\_ County of MERCED, California

Brief Legal Description REF. MON. <sup>10</sup> S.E. COR 16, T10S R12E MOBEM



**CORNER TYPE**

Government Corner  Control   
 Meander  Property   
 Rancho  Other   
 Date of Survey 7-12-90

**COORDINATES (Optional)**

N. \_\_\_\_\_  
 E. \_\_\_\_\_  
 Zone \_\_\_\_\_ Datum \_\_\_\_\_  
 Elev. \_\_\_\_\_

Corner — Left as found  Found and tagged  Established  Reestablished  Rebuilt

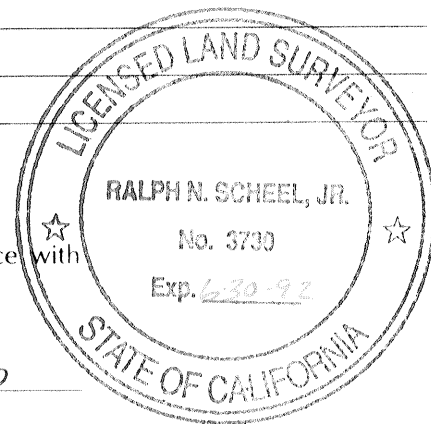
Identification and type of corner found: Evidence used to identify or procedure used to establish or reestablish the corner: SET REFERENCE MONUMENT 74.79' NORTH OF SOUTHEAST CORNER OF SECTION 16, T10S R12E

A description of the physical condition of the monument as found and as set or reset: 1" I. PIPE WITH CALTRANS MON. (RED) PLUG, FLUSH IN PAVEMENT.

**SURVEYOR'S STATEMENT**

This Corner Record was prepared by me or under my direction in conformance with the Land Surveyors' Act on 7-12 1990.

Signed Ralph N. Scheel, Jr. L.S. or R.C.E. Number LS3730



**COUNTY SURVEYOR'S STATEMENT**

This Corner Record was received August 1990 and examined and filed August 22, 1990.

Signed Roy L. Turney Title Dep. Co. Surveyor



County Surveyor's Comment COR. No. 3034

REF MON

16	15	TIOSR 12E
21	22	MOB&M

9 10  
16 15  
FD 3/4" I. PIPE  
LS .....  
FLUSH

SAN JUAN ROAD

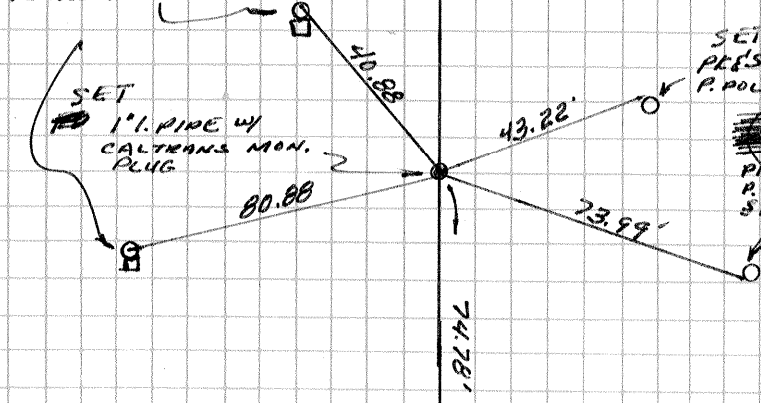
528.40

SET PK'S IN TOP OF TELE. P. GUARD POST

SET 1" I. PIPE w/ CALTRANS MON. PLUG

SET PK'S IN P. POLE

PK IN P. POLE SET



FD BR CAP IN WELL  
CAL. DOW H

16 15  
21 22

STATE ROUTE 152