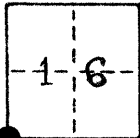


#3033

# CORNER RECORD

COUNTY OF Merced T. 10S R. 12E Mt. Diablo MERRIDIAN CALIFORNIA  
 CORNER TYPE: GOV'T. CORNER  MEANDER  CHO  CONTROL  OTHER   
 CORNER IDENTIFICATION — DATE OF VISIT December 27 1978



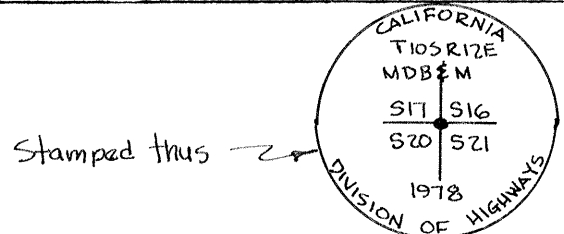
CORNER — LEFT AS FOUND  FOUND AND TAGGED  REESTABLISHED OBLITERATED CORNER  REBUILT

PHYSICAL DESCRIPTION OF CORNER FOUND; EVIDENCE AND METHOD USED TO IDENTIFY OR REESTABLISH

Found H&T, down 0<sup>5</sup>, per State of California Highway Map dated Dec. 1, 1970 for State Route 152, filed with the Merced County Surveyor.

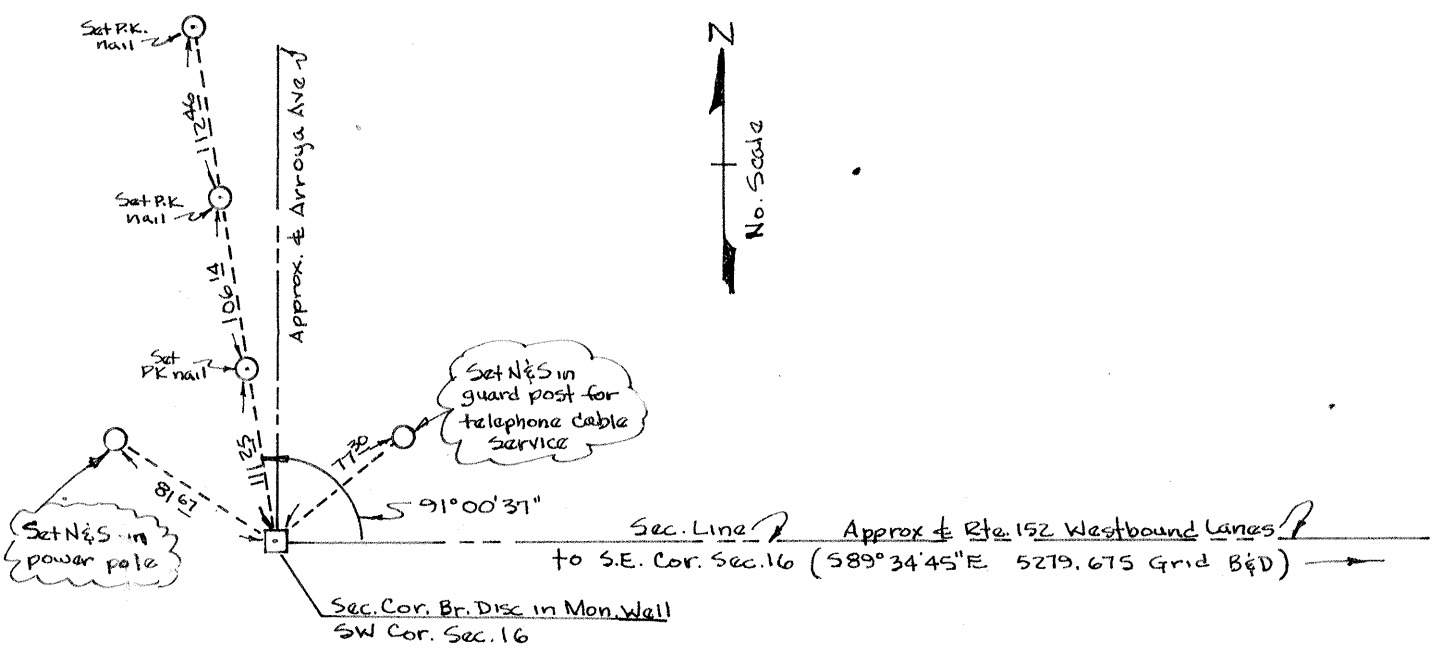
PHYSICAL DESCRIPTION OF MONUMENTS REBUILT OR PERPETUATED

Removed H&T and set 3 1/2" brass disc in concrete at exact position of H&T. Set in Monument Well.



CALIFORNIA COORDINATE SYSTEM ORDER: FIRST  SECOND  THIRD   
 STATIONS USED: NGS (USC & GS)  STATE  COUNTY  OTHER  STATION \_\_\_\_\_  
 ZONE III ELEVATION \_\_\_\_\_ NORTHINGS (Y) 201,968.595 EASTINGS (X) 1,950,178.407  
 Combined Grid Factor = 0.9999952

SKETCH: (Include reference tie or witness points, remarks and topo of area)



**SURVEYOR'S CERTIFICATE**  
 THIS CORNER RECORD WAS PREPARED BY ME OR UNDER MY DIRECTION IN CONFORMANCE WITH THE LAND SURVEYORS ACT ON January 4, 1979  
 SIGNED: Saunders W. Chen  
 R.C.E. No.: 12688  
 NO. 12688  
 SEAL

**COUNTY SURVEYOR'S CERTIFICATE**  
 THE CORNER RECORD WAS RECEIVED \_\_\_\_\_ 19\_\_\_\_\_  
 AND EXAMINED AND FILED \_\_\_\_\_ 19\_\_\_\_\_  
 BY: \_\_\_\_\_  
 TITLE: \_\_\_\_\_  
 DOCUMENT No. 3033  
 STATEMENT ON BACK OF SHEET YES  NO