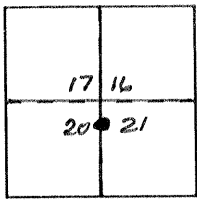


CORNER RECORD

Document Number 3033

City of _____ County of MERCED, California

Brief Legal Description REFERENCE MON. TO SEC. COR. - N.E. COR. SECT 20, T10S R12E MDBEM



CORNER TYPE

Government Corner Control
 Meander Property
 Rancho Other
 Date of Survey 7-12-90

COORDINATES (Optional)

N. _____
 E. _____
 Zone _____ Datum _____
 Elev. _____

Corner — Left as found Found and tagged Established Reestablished Rebuilt

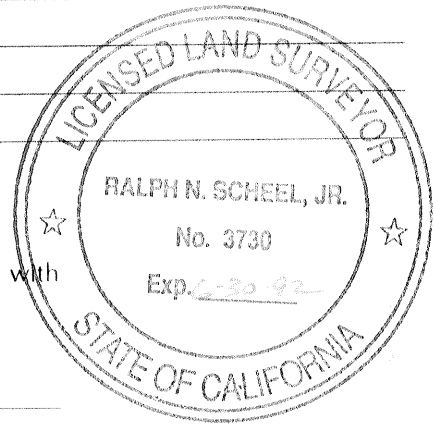
Identification and type of corner found: Evidence used to identify or procedure used to establish or reestablish the corner: SET 1" I. PIPE WITH CALTRANS MON. PLUG 248.44 FEET SOUTH OF THE NORTH EAST CORNER OF, AND ON THE EAST LINE OF SECTION 20, T10S R12E MDBEM

A description of the physical condition of the monument as found and as set or reset: SET 1" I. PIPE WITH CALTRANS MON (RED) PLUG - FLUSH

SURVEYOR'S STATEMENT

This Corner Record was prepared by me or under my direction in conformance with the Land Surveyors' Act on 7-12 1990.

Signed Ralph N. Scheel, Jr. L.S. or R.C.E. Number LS3730



COUNTY SURVEYOR'S STATEMENT

This Corner Record was received August 1990 and examined and filed August 22 1990.

Signed Roy L. Turney Title Dep. Co. Surveyor



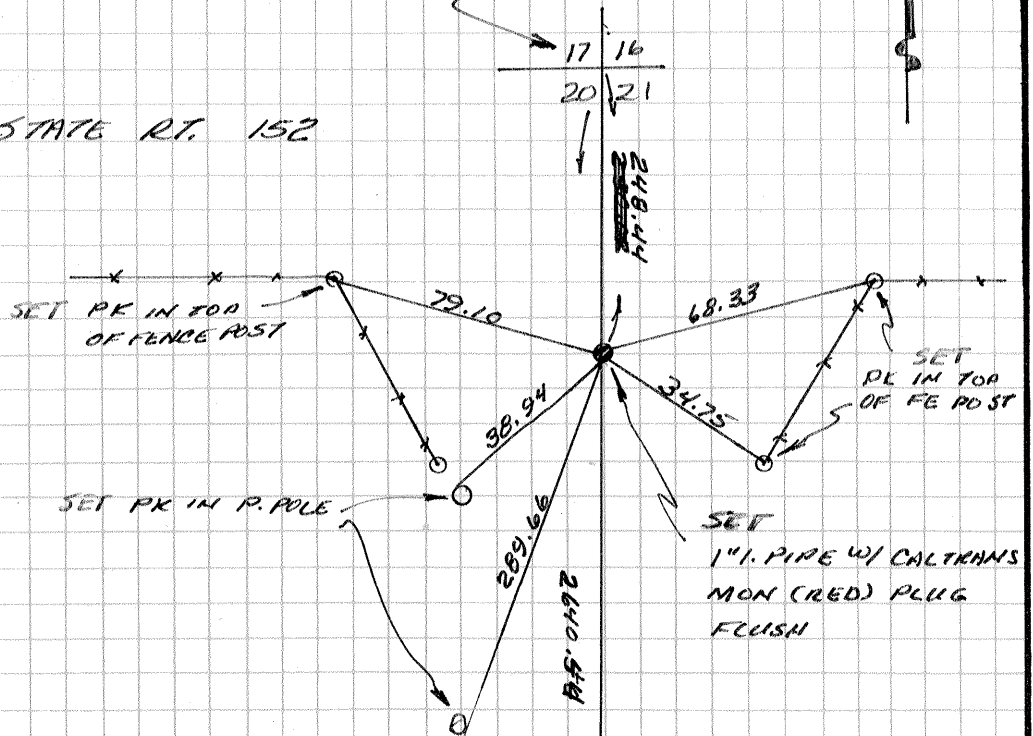
County Surveyor's Comment COR. NO. 3033

17 16 T105 R12E
20 21 MDB&M

REF. MON.

FD
CAL. D.D.Z BR. CAP
IN MON. WELL

STATE RT. 152



SET PK IN P. POLE

SET
1" PIPE W/ CALTRANS
MON (RED) PLUG
FLUSH

FND 3/4" PIPE W/ PLUG
LS4156
1812526

ARROYA AVENUE