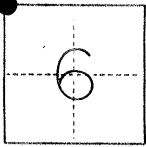


CORNER RECORD

COUNTY OF Merced T. 10 S. R. 9 E. M.D.B. & MERIDIAN CALIFORNIA

CORNER TYPE: GOV'T. CORNER MEANDER RANCHO CONTROL OTHER

CORNER IDENTIFICATION — DATE OF VISIT June 19, 1986



Northwest corner of Section 6, 10/9

CORNER — LEFT AS FOUND FOUND AND TAGGED REESTABLISHED OBLITERATED CORNER REBUILT

PHYSICAL DESCRIPTION OF CORNER FOUND; EVIDENCE AND METHOD USED TO IDENTIFY OR REESTABLISH

Found a badly decayed 3" x 3" redwood, Down 1.3'

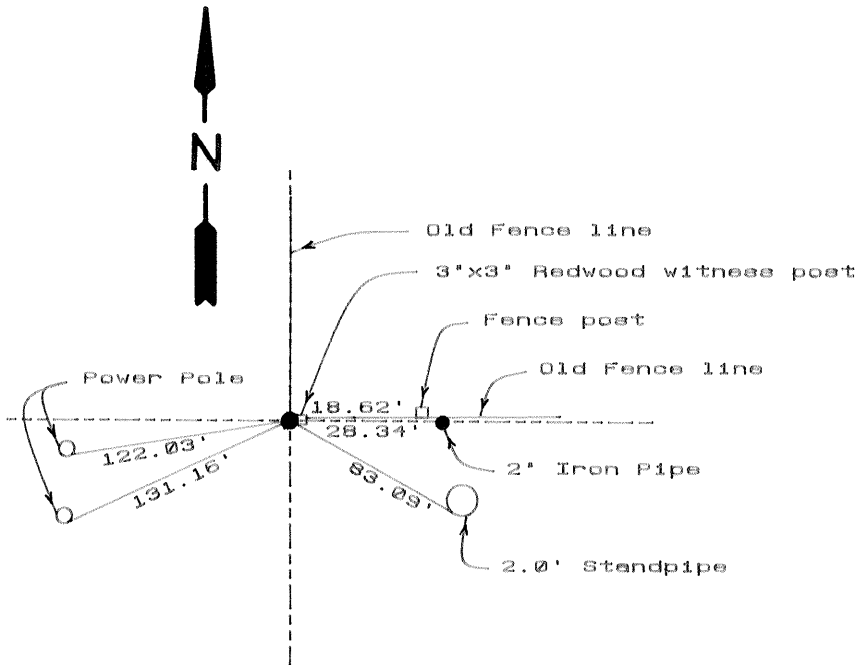
PHYSICAL DESCRIPTION OF MONUMENTS REBUILT OR PERPETUATED

Set a 1" O.D. x 28" galvanized iron pipe with plastic plug L.S. 5355 in center of 3" x 3" redwood, 1.3' below surface.

SKETCH: (Include reference tie or witness points, remarks and topo of area)

Ties

- 0.70' West of 3" x 3" redwood witness post painted white, 0.5' below ground.
- 122.03' East of nail and shiner in power pole with transformers.
- 131.16' Northeast of nail and shiner in power pole with switch boxes.
- 83.09' West of (x) on 2' diameter concrete standpipe.
- 18.62' West of nail and shiner in fence post.
- 28.34' West of 2" iron pipe with tag L.S. 4714.

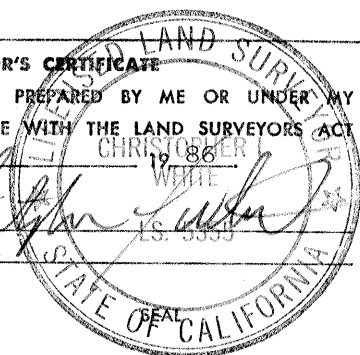


SURVEYOR'S CERTIFICATE

THIS CORNER RECORD WAS PREPARED BY ME OR UNDER MY DIRECTION IN CONFORMANCE WITH THE LAND SURVEYORS ACT ON July 9, 1986

SIGNED: [Signature]

L.S. or R.C.E. No.: 5355



COUNTY SURVEYOR'S CERTIFICATE

THE CORNER RECORD WAS RECEIVED 12/18 1986 AND EXAMINED AND FILED 12/18 1986

BY: [Signature]
TITLE: Deputy Co. Surveyor

DOCUMENT No. 3014

STATEMENT ON BACK OF SHEET

YES NO