

L
R
L

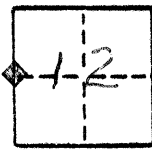
2, CP
70 1/2
1 AN, CH.

CORNER RECORD

COUNTY OF MERCED T. 11S. R. 12E MDBE MERIDIAN CALIFORNIA

CORNER TYPE: GOVT. CORNER MEANDER RANCHO CONTROL OTHER

CORNER IDENTIFICATION - DATE OF VISIT APRIL 26, 1982



W 1/4 CORNER SECTION 12
MILLUX AND THOMAS AVENUES
(PALM)

CORNER - LEFT AS FOUND FOUND AND TAGGED REESTABLISHED OBLITERATED CORNER REBUILT

PHYSICAL DESCRIPTION OF CORNER FOUND; EVIDENCE AND METHOD USED TO IDENTIFY OR REESTABLISH

FOUND 3/4" ID. IRON PIPE WITH PLASTIC TAG WITH NO STAMPING.
CORNER IS A MERCED COUNTY MONUMENT SET 10" UNDER IN WELL w/ LID.

PHYSICAL DESCRIPTION OF MONUMENTS REBUILT OR PERPETUATED

CALIFORNIA COORDINATE SYSTEM ORDER: FIRST SECOND THIRD

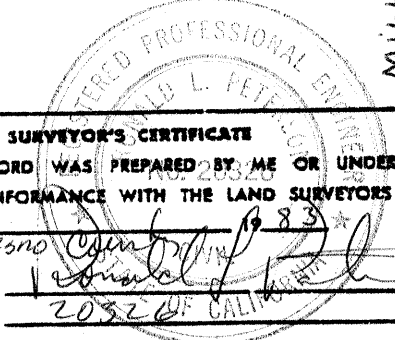
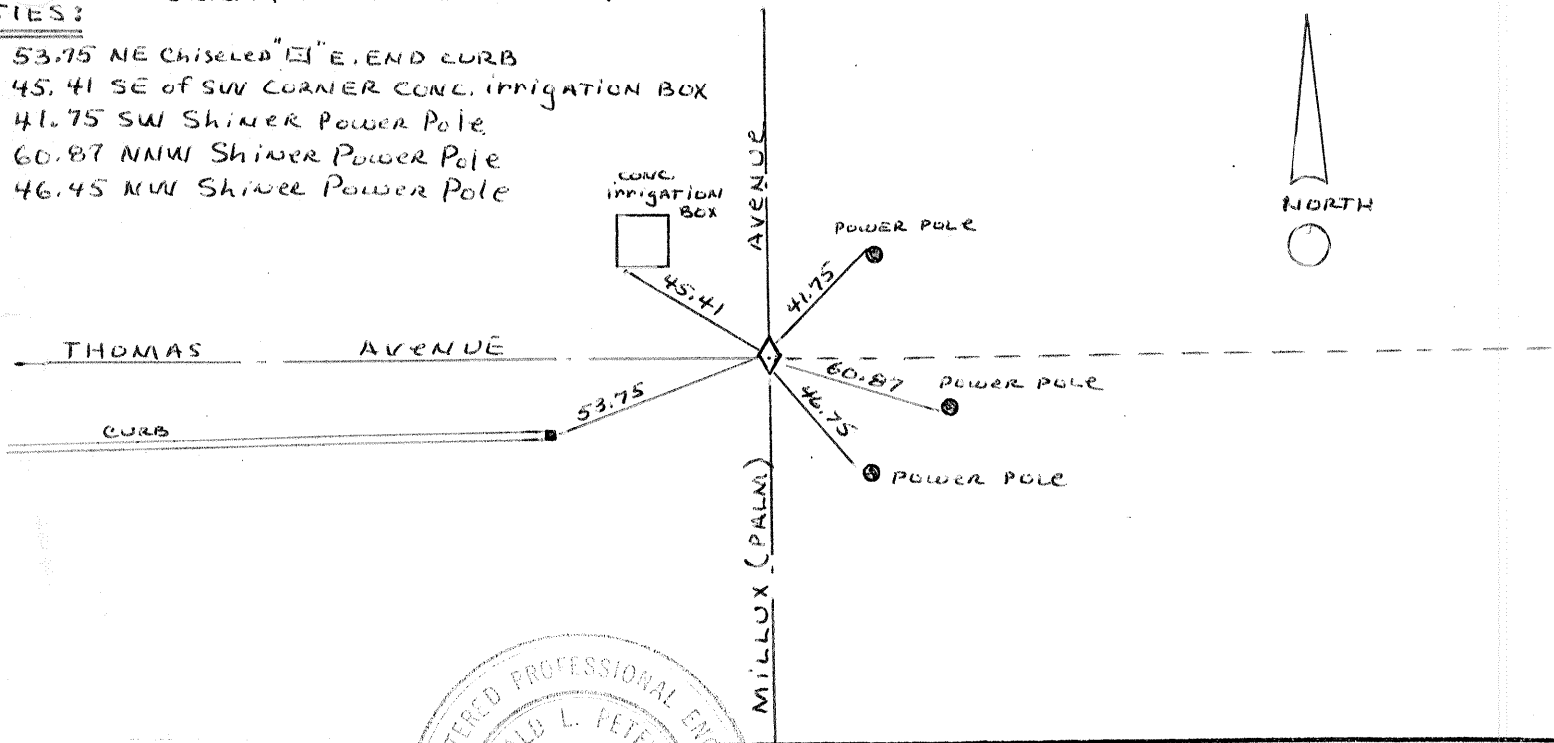
STATIONS USED: NGS (USC & GS) STATE COUNTY OTHER STATION _____ STATION _____

ZONE _____ ELEVATION _____ NORTHINGS (Y) _____ EASTINGS (X) _____

SKETCH: (Include reference tie or witness points, remarks and topo of area)

TIES:

- 53.75 NE CHISELED "E" END CURB
- 45.41 SE of SWV CORNER CONC. IRRIGATION BOX
- 41.75 SW Shiner Power Pole
- 60.87 NW Shiner Power Pole
- 46.75 NW Shiner Power Pole



SURVEYOR'S CERTIFICATE

THIS CORNER RECORD WAS PREPARED BY ME OR UNDER MY DIRECTION IN CONFORMANCE WITH THE LAND SURVEYORS ACT ON Feb 17, 1983 for Fresno County.

SIGNED: [Signature]

L.S. or R.C.E. No.: 20326

COUNTY SURVEYOR'S CERTIFICATE

THE CORNER RECORD WAS RECEIVED _____ 19____ AND EXAMINED AND FILED MAY 10, 1983

BY: [Signature]

TITLE: _____

DOCUMENT No. 2991A

STATEMENT ON BACK OF SHEET YES NO

SEAL