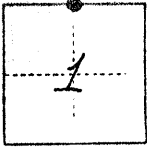


CC JER RECORD

COUNTY OF MERCED T. 11S. R. 12E. M.D. B. & MERIDIAN CALIFORNIA

CORNER TYPE: GOV'T. CORNER  MEANDER  RANCHO  CONTROL  OTHER   
CORNER IDENTIFICATION -- DATE OF VISIT APRIL 8, 1986



NORTH 1/4 CORNER SECTION 1 1/12  
ESTHER AVE. & EUCALYPTUS ROAD

CORNER -- LEFT AS FOUND  FOUND AND TAGGED  REESTABLISHED OBLITERATED CORNER  REBUILT

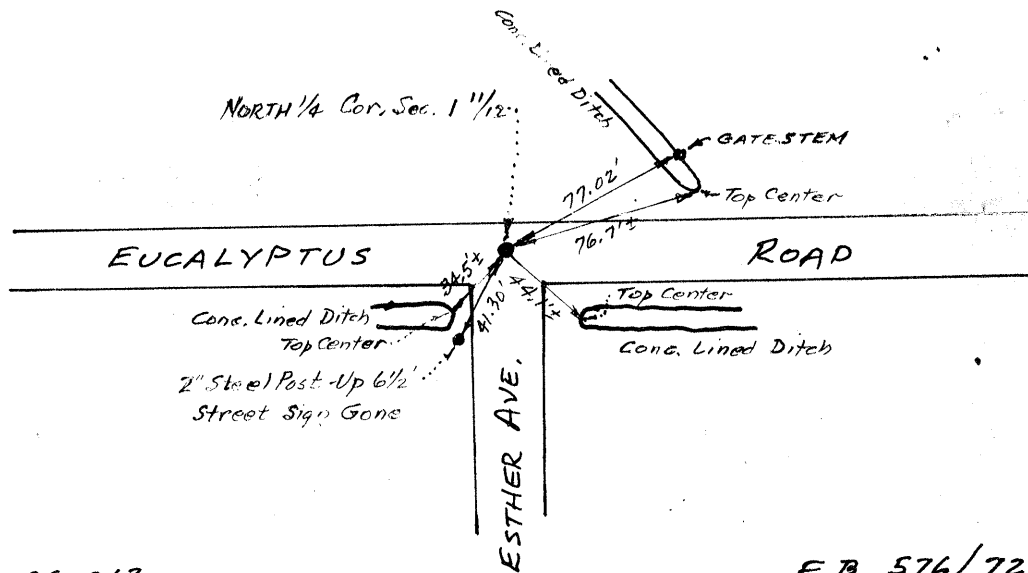
PHYSICAL DESCRIPTION OF CORNER FOUND; EVIDENCE AND METHOD USED TO IDENTIFY OR REESTABLISH

FOUND PLASTIC CAP RCE 12700 ON IRON ROD - 3" DOWN IN  
MERCED CO. HANDWELL W/ 2' TIES N. & W.

PHYSICAL DESCRIPTION OF MONUMENTS REBUILT OR PERPETUATED

CALIFORNIA COORDINATE SYSTEM ORDER: FIRST  SECOND  THIRD   
STATIONS USED: NGS (USC & GS)  STATE  COUNTY  OTHER  STATION \_\_\_\_\_ STATION \_\_\_\_\_  
ZONE \_\_\_\_\_ ELEVATION \_\_\_\_\_ NORTHINGS (Y) \_\_\_\_\_ EASTINGS (X) \_\_\_\_\_

SKETCH: (Include reference tie or witness points, remarks and topo of area)



J.N. 86-013

F.B. 576/72

SURVEYOR'S CERTIFICATE

THIS CORNER RECORD WAS PREPARED BY ME OR UNDER MY DIRECTION IN CONFORMANCE WITH THE LAND SURVEYORS ACT ON APRIL 9, 1986

SIGNED: William O. Gentry  
L.S. or R.C.E. No.: 2737

COUNTY SURVEYOR'S CERTIFICATE

THE CORNER RECORD WAS RECEIVED 4-15-1986  
AND EXAMINED AND FILED 4-15-1986

BY: Ray Turney  
TITLE: Deputy Co. Surveyor

DOCUMENT No. 2990

STATEMENT ON BACK OF SHEET

YES  NO