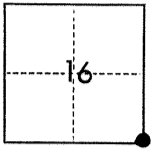


# CORNER RECORD

COUNTY OF Merced T. 11 S. R. 8 E Mount Diablo MERIDIAN CALIFORNIA

CORNER TYPE: GOV'T. CORNER  MEANDER  RANCHO  CONTROL  OTHER

CORNER IDENTIFICATION — DATE OF VISIT July, 1975



Southeast corner of Section 16, Township 11 South, Range 8 East, Mount Diablo Meridian

CORNER — LEFT AS FOUND  FOUND AND TAGGED  REESTABLISHED OBLITERATED CORNER  REBUILT

PHYSICAL DESCRIPTION OF CORNER FOUND; EVIDENCE AND METHOD USED TO IDENTIFY OR REESTABLISH

Found rock mound by measuring from found (and previously used) mounuments to the North and West (see sketch).

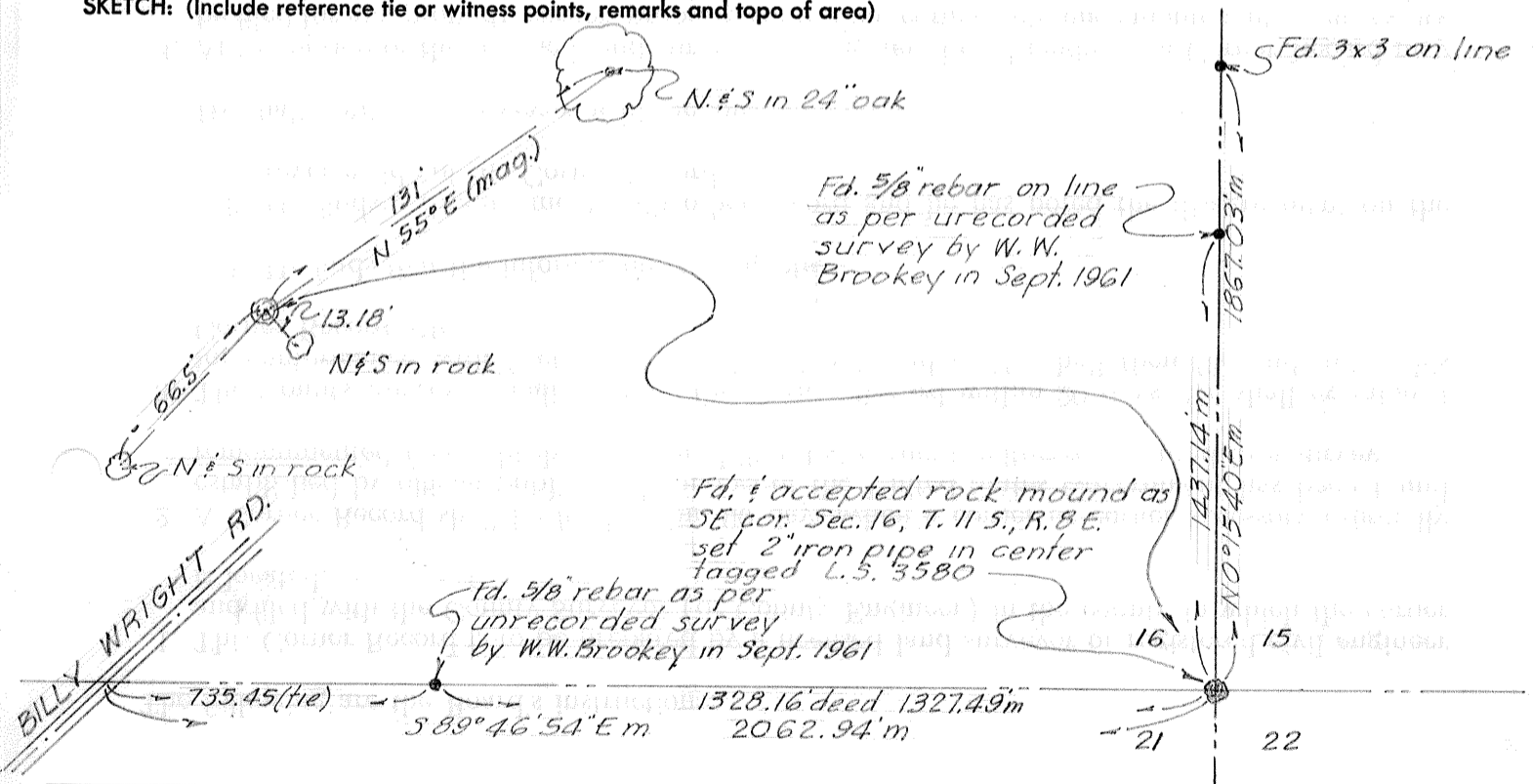
PHYSICAL DESCRIPTION OF MONUMENTS REBUILT OR PERPETUATED

Found rock mound and set 2" dia. x 30" iron pipe Tagged L. S. 3580 in center of said mound.

CALIFORNIA COORDINATE SYSTEM ORDER: FIRST  SECOND  THIRD   
STATIONS USED: NGS (USC & GS)  STATE  COUNTY  OTHER  STATION \_\_\_\_\_ STATION \_\_\_\_\_  
ZONE \_\_\_\_\_ ELEVATION \_\_\_\_\_ NORTHINGS (Y) \_\_\_\_\_ EASTINGS (X) \_\_\_\_\_

(Fold)

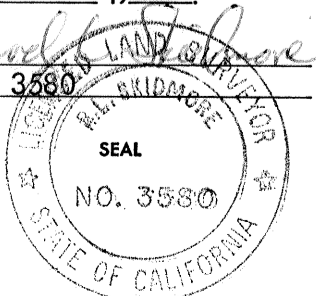
SKETCH: (Include reference tie or witness points, remarks and topo of area)



**SURVEYOR'S CERTIFICATE**

THIS CORNER RECORD WAS PREPARED BY ME OR UNDER MY DIRECTION IN CONFORMANCE WITH THE LAND SURVEYORS ACT ON October 9 1975

SIGNED: Richard B. Skidmore  
L.S. or R.C.E. No.: L.S. 3580



**COUNTY SURVEYOR'S CERTIFICATE**

THE CORNER RECORD WAS RECEIVED \_\_\_\_\_ 19\_\_\_\_  
AND EXAMINED AND FILED \_\_\_\_\_ 19\_\_\_\_

BY: \_\_\_\_\_  
TITLE: \_\_\_\_\_

DOCUMENT No. 2949

STATEMENT ON BACK OF SHEET

YES  NO