

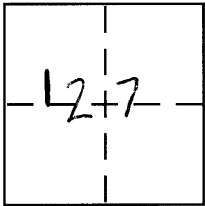
CORNER RECORD

Document Number 2937-B

City of _____

County of MERCED, California

Brief Legal Description E. LINE OF LOT 17 30.P.21 M.C.R.



CORNER TYPE

- Government Corner Control
- Meander Property
- Rancho Other
- Date of Survey 2/11/09

COORDINATES (Optional)

- N. _____
- E. _____
- Zone _____ NAD27 NAD83
- NAD83 Epoch _____
- Elev. _____
- Vert. Datum: NGVD29 NAVD88
- Meas. Units: Metric Imperial

Corner - Left as found Found and tagged Established Reestablished Rebuilt

Identification and type of corner found: Evidence used to identify or procedure used to establish or reestablish the corner:

SEE SKETCH

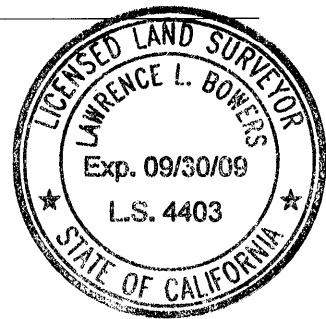
A description of the physical condition of the monument as found and as set or reset:

SEE SKETCH

SURVEYOR'S STATEMENT

This Corner Record was prepared by me or under my direction in conformance with the Land Surveyor's Act on 2-27-09

Signed [Signature] P.L.S or R.C.E. No. _____



COUNTY SURVEYOR'S STATEMENT

This Corner Record was received March 24, 2009

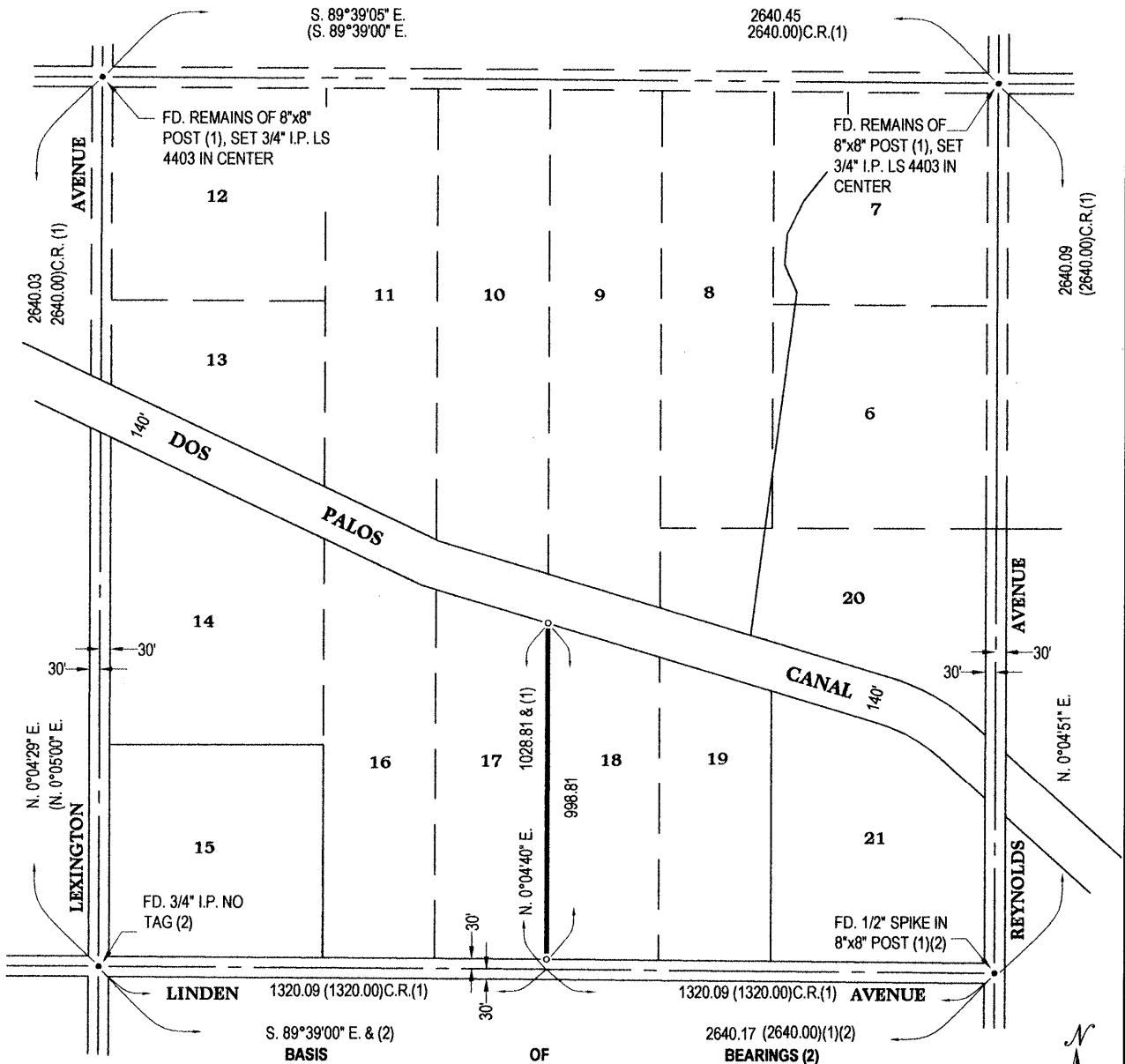
and examined and filed March 24, 2009

Signed [Signature] P.L.S or ~~RECEIVED~~ No. 4895

Title Dep. County Surveyor

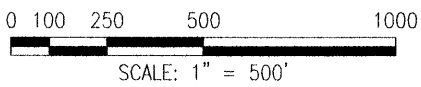


County Surveyor's Comment _____



REFERENCE:

1. MAP OF MILLER AND LUX SUBDIVISION, 3 O.P. 21 M.C.R.
2. PARCEL MAP FOR FRANK AND ELAINE CUNHA, 25 P.M. 2 M.C.R.



LEGEND

- FOUND AND ACCEPTED MONUMENT AS INDICATED
- SET 3/4" IRON PIPE, L.S. 4403

BASIS OF BEARINGS

S. 89°39'00" E. FOR THE CENTERLINE OF LINDEN AVENUE AS SHOWN ON THE PARCEL MAP FOR FRANK AND ELAINE CUNHA, RECORDED IN VOLUME 25 OF PARCEL MAPS, AT PAGE 2, MERCED COUNTY RECORDS.

