

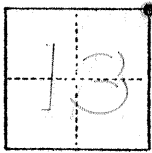
No. 285

CORNER RECORD

COUNTY OF MERCED T. 103 R. 1097E MPBE MERIDIAN CALIFORNIA

CORNER TYPE: GOV'T. CORNER MEANDER RANCHO CONTROL OTHER

CORNER IDENTIFICATION — DATE OF VISIT DEC. 1979



NORTH EAST CORNER OF SEC 13
T. 103, R. 9E

CORNER — LEFT AS FOUND FOUND AND TAGGED REESTABLISHED OBLITERATED CORNER REBUILT

PHYSICAL DESCRIPTION OF CORNER FOUND; EVIDENCE AND METHOD USED TO IDENTIFY OR REESTABLISH

FD COTTON SPINDLE IN BRIDGE, AS PER MILLER & LUX RECORDS

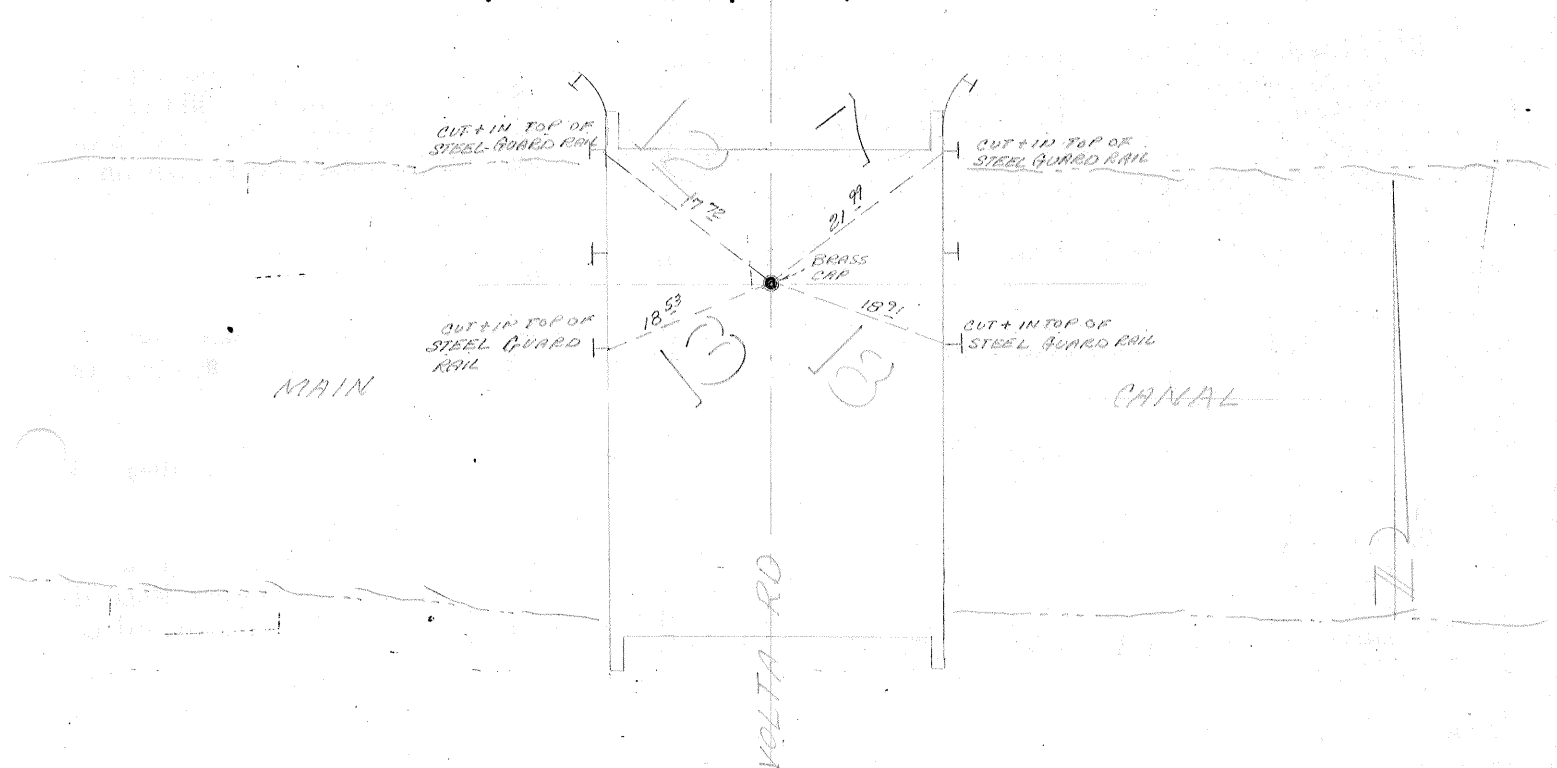
PHYSICAL DESCRIPTION OF MONUMENTS REBUILT OR PERPETUATED

SET BRASS CAP IN CONC BRIDGE STAMPED WITH SEC'S 7, 12, 13 & 18

CALIFORNIA COORDINATE SYSTEM ORDER: FIRST SECOND THIRD
STATIONS USED: NGS (USC & GS) STATE COUNTY OTHER STATION _____ STATION _____
ZONE _____ ELEVATION _____ NORTHINGS (Y) _____ EASTINGS (X) _____

(Fold)

SKETCH: (Include reference tie or witness points, remarks and topo of area)



SURVEYOR'S CERTIFICATE

THIS CORNER RECORD WAS PREPARED BY ME OR UNDER MY DIRECTION IN CONFORMANCE WITH THE LAND SURVEYORS ACT ON _____ 19____.

SIGNED: _____

L.S. or R.C.E. No.: _____

SEAL

COUNTY SURVEYOR'S CERTIFICATE

THE CORNER RECORD WAS RECEIVED _____ 19____ AND EXAMINED AND FILED _____ 19____.

BY: _____

TITLE: _____

DOCUMENT No. 2854

STATEMENT ON BACK OF SHEET

YES NO