

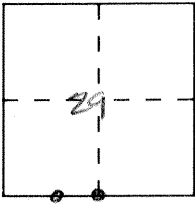
CORNER RECORD

Document Number 3725 M & 2850

City of _____

County of Merced, California

Brief Legal Description S 1/4 Corner Section 29 10/10



CORNER TYPE

Government Corner Control
 Meander Property
 Rancho Other
 Date of Survey _____

COORDINATES (Optional)

N. _____
 E. _____
 Zone _____ Datum _____
 Elev. _____

Corner — Left as found Found and tagged Established Reestablished Rebuilt

Identification and type of corner found: Evidence used to identify or procedure used to establish or reestablish the corner:

A description of the physical condition of the monument as found and as set or reset: _____

1/4 Cor. - Fd. 3/4" round bolt - Set monument well over bolt.

Fd. Cotton spindle - Set 3/4" I.P., L.S. 4403 in monument well.

F.B. 568-42

SURVEYOR'S STATEMENT

This Corner Record was prepared by me or under my direction in conformance with the Land Surveyors' Act on Sept. 7 1993.

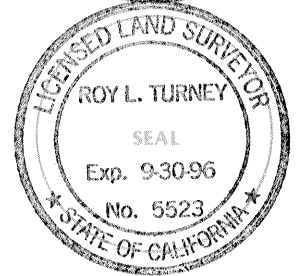
Signed [Signature] L.S. or R.C.E. Number _____



COUNTY SURVEYOR'S STATEMENT

This Corner Record was received SEPT. 1993 and examined and filed SEPT. 16, 1993.

Signed [Signature] Title DEP. CO. SUR.



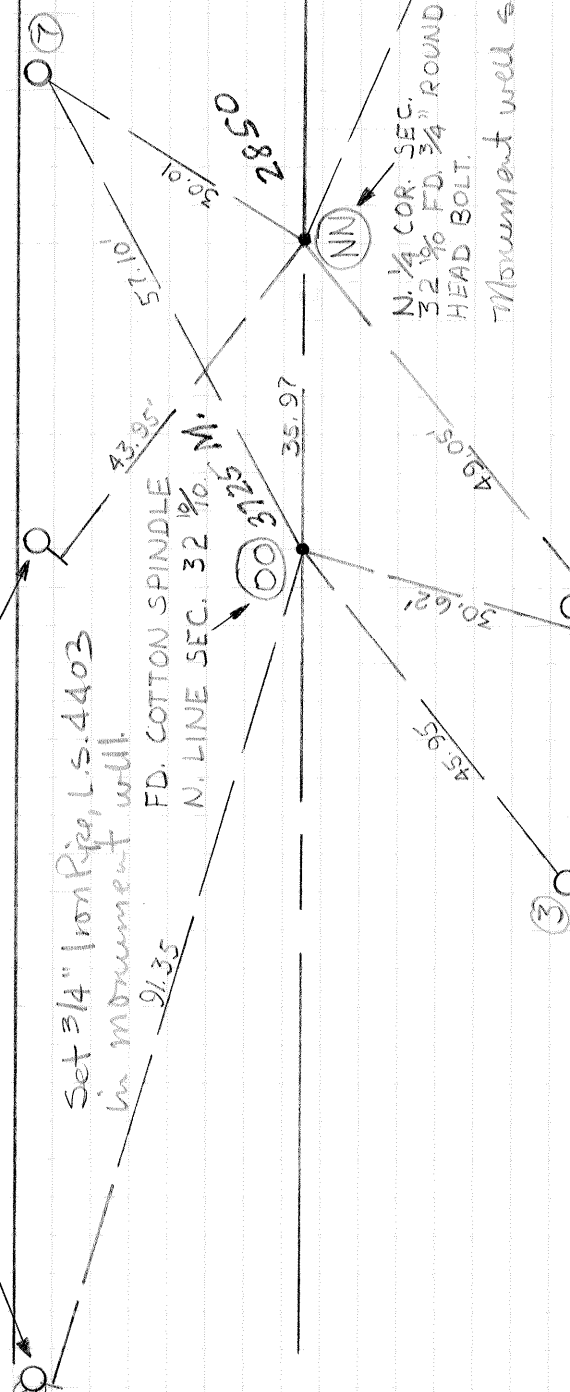
County Surveyor's Comment _____

SEC 29



FD. NAIL & SHINER S. SIDE OF TRIPLE TRANS. POLE.

FD. NAIL & SHINER SW SIDE OF POWER POLE



Set 3/4" Iron Pipe, L.S. 4403 in monument well

FD. COTTON SPINDLE N. LINE SEC. 32 1/2

N. 1/4 COR. SEC. 32 1/2 FD. 3/4" ROUND HEAD BOLT. Monument well set over bolt

SET NAIL & SHINER W. SIDE POWER POLE. FD. NAIL & SHINER SE SIDE OF POWER POLE

TACK IN CHISELED "T" AT X PT IN 2' CONC. BLOCK WALL.

POINTS WERE TIED OUT PRIOR TO PAVING EFFORT BY MERCED COUNTY DEPARTMENT OF PUBLIC WORKS

③ ④ ⑦ SET 3/4" IP W/BLANK (YELLOW) TAG IN POLE LINE

SEC 32