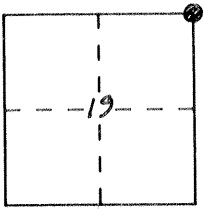


CORNER RECORD

Document Number 2847

City of _____ County of MERCED, California

Brief Legal Description N.E. COR SECT. 19, T10S R11E. M.D.B. & M.



CORNER TYPE

Government Corner Control
Meander Property
Rancho Other
Date of Survey 7-12-90

**COORDINATES
(Optional)**

N. _____
E. _____
Zone _____ Datum _____
Elev. _____

Corner — Left as found Found and tagged Established Reestablished Rebuilt

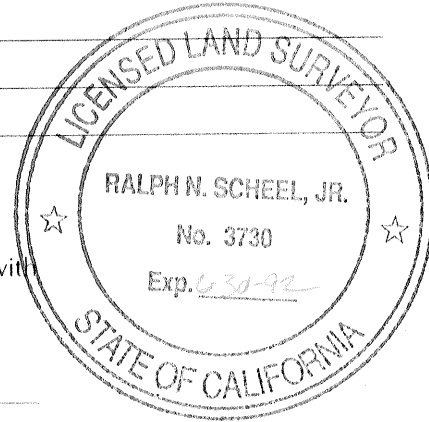
Identification and type of corner found: Evidence used to identify or procedure used to establish or reestablish the corner: FOUND H&T PER COORDINATES & RECORDS, STATE HWY MAP 10 MER 152, Pg 2 OF 47

A description of the physical condition of the monument as found and as set or reset: HUB & TACK IN GOOD CONDITION, DOWN 0"

SURVEYOR'S STATEMENT

This Corner Record was prepared by me or under my direction in conformance with the Land Surveyors' Act on July 12 19 90.

Signed Ralph N. Scheel Jr. L.S. or R.C.E. Number LS3730



COUNTY SURVEYOR'S STATEMENT

This Corner Record was received August 19 90 and examined and filed August 22 19 90.

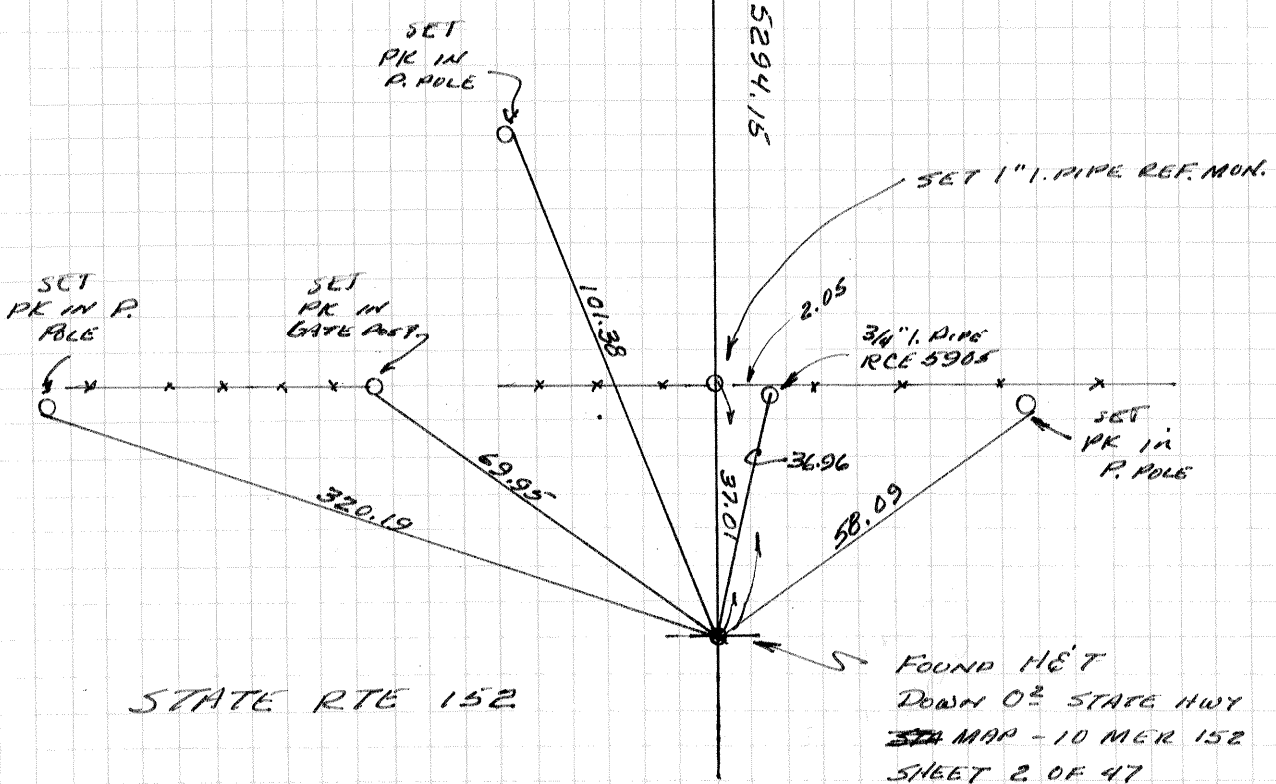
Signed Roy L. Turney Title Dep. Co. Surveyor



County Surveyor's Comment Cor. # 2847

18 17
19 20
T105 R11E
MDR6M

7 8
18 17
F.d. BR. CAP IN
CONCRETE
28RS 26



STATE RTE 152