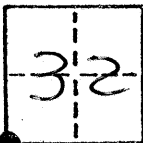


CORNER RECORD

COUNTY OF Merced T. 9 S. R. 11 E. MDB MERIDIAN CALIFORNIA

CORNER TYPE: GOVT. CORNER MEANDER RANCHO CONTROL OTHER
 CORNER IDENTIFICATION -- DATE OF VISIT March 28 1985



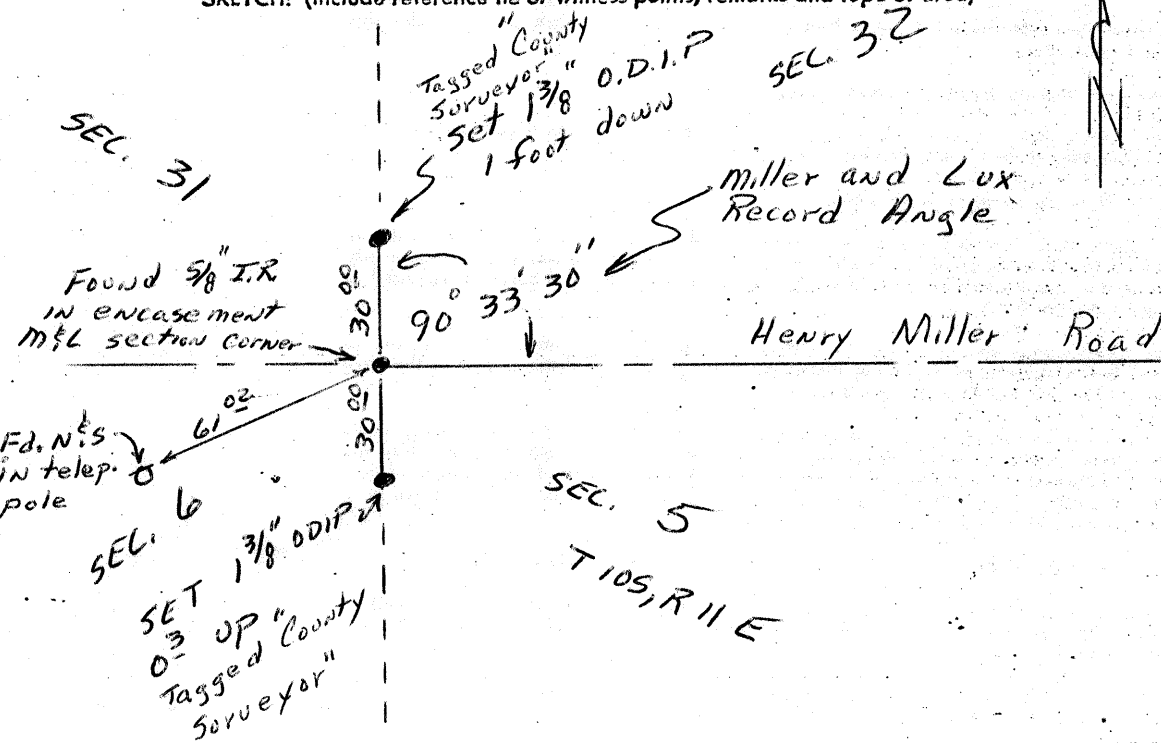
CORNER — LEFT AS FOUND FOUND AND TAGGED REESTABLISHED OBLITERATED CORNER REBUILT

PHYSICAL DESCRIPTION OF CORNER FOUND, EVIDENCE AND METHOD USED TO IDENTIFY OR REESTABLISH
Found 5/8" iron rod in encasement

PHYSICAL DESCRIPTION OF MONUMENTS REBUILT OR PERPETUATED
Set 1 3/8" O.D.I.P.'s north and south of monument.

CALIFORNIA COORDINATE SYSTEM ORDER: FIRST SECOND THIRD
 STATIONS USED: NGS (USC & GS) STATE COUNTY OTHER STATION _____ STATION _____
 ZONE _____ ELEVATION _____ NORTHINGS (Y) _____ EASTINGS (X) _____

SKETCH: (Include reference tie or witness points, remarks and topo of area)



Compiled by
 Gary Grindler
 Party Chief
 From notes in
 Field book 51 p. 43
 Merced County Road
 Department Records
 Gary Grindler
 4-25-1985

SURVEYOR'S CERTIFICATE

THIS CORNER RECORD WAS PREPARED BY ME OR UNDER MY DIRECTION IN CONFORMANCE WITH THE LAND SURVEYORS ACT ON _____ 19____

SIGNED: _____

L.S. or P.C.E. No.: _____

SEAL

COUNTY SURVEYOR'S CERTIFICATE

THE CORNER RECORD WAS RECEIVED 1 MAY 1985
 AND EXAMINED AND FILED 3 MAY 1985

BY: Roy Turner
 TITLE: Dep. Co. Sur.

DOCUMENT No. 2845

STATEMENT ON BACK OF SHEET

YES NO