

No
~~2842~~
2844

(For C Only)

CORNER RECORD

COUNTY OF MERCED T. 10-S R. 10-E M.D.B.M MERIDIAN CALIFORNIA

CORNER TYPE: GOV'T. CORNER MEANDER RANCHO CONTROL OTHER

CORNER IDENTIFICATION — DATE OF VISIT 6-29-76 19__



FD, 2" I.P. W/ALUM. TAG NO R.C.E. OR L.S. NUMBER
NE COR. SEC 12 (1' DEEP)

CORNER — LEFT AS FOUND FOUND AND TAGGED REESTABLISHED OBLITERATED CORNER REBUILT

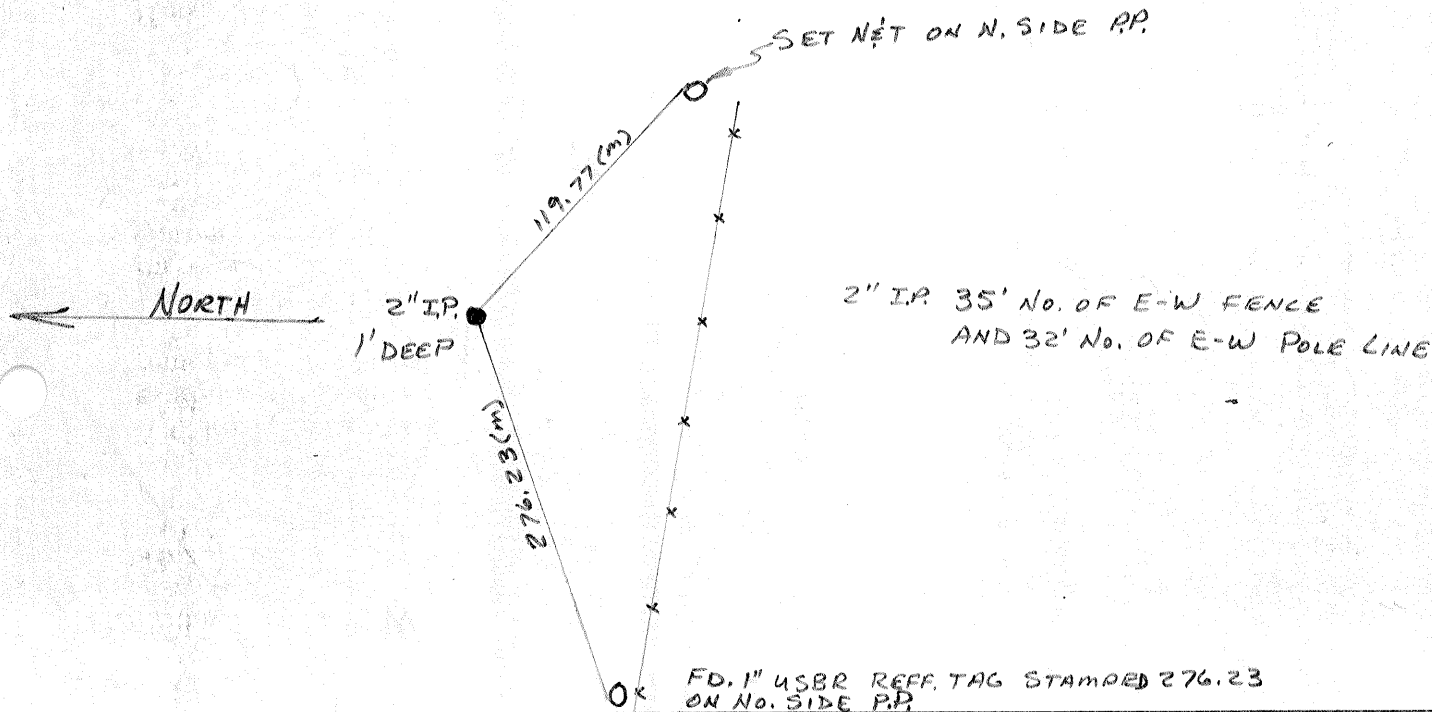
PHYSICAL DESCRIPTION OF CORNER FOUND; EVIDENCE AND METHOD USED TO IDENTIFY OR REESTABLISH

PHYSICAL DESCRIPTION OF MONUMENTS REBUILT OR PERPETUATED

CALIFORNIA COORDINATE SYSTEM ORDER: FIRST SECOND THIRD
STATIONS USED: NGS (USC & GS) STATE COUNTY OTHER STATION _____ STATION _____
ZONE _____ ELEVATION _____ NORTHINGS (Y) _____ EASTINGS (X) _____

(Fold)

SKETCH: (Include reference tie or witness points, remarks and topo of area)

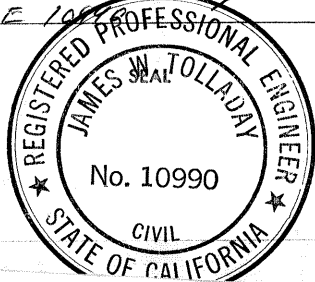


SURVEYOR'S CERTIFICATE

THIS CORNER RECORD WAS PREPARED BY ME OR UNDER MY DIRECTION IN CONFORMANCE WITH THE LAND SURVEYORS ACT ON JUNE 30 1976.

SIGNED: James W Tolladay

L.S. or R.C.E. No. RCE 10990



COUNTY SURVEYOR'S CERTIFICATE

THE CORNER RECORD WAS RECEIVED _____ 19__ AND EXAMINED AND FILED _____ 19__.

BY: _____

TITLE: _____

DOCUMENT No. 2844

STATEMENT ON BACK OF SHEET

YES NO