

# CORNER RECORD

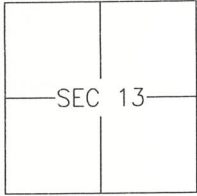
Agency Index 2843-U

Document Number \_\_\_\_\_

City of LOS BANOS

County of MERCED, California

Brief Legal Description LOT 89 OF MISSION VILLAGE SOUTH, PHASE 2, 74-OP-34



T10S/R10E

### CORNER TYPE

- Government Corner  Control   
 Meander  Property   
 Rancho  Other

Date of Survey 2018-05-16

### COORDINATES (Optional)

- N. \_\_\_\_\_ E. \_\_\_\_\_  
 Elevation \_\_\_\_\_  
 Units Metric  U.S. Survey Foot   
 Horizontal Datum \_\_\_\_\_  
 Zone \_\_\_\_\_ Epoch Date \_\_\_\_\_  
 Vertical Datum: \_\_\_\_\_  
 Complies with Public Resources Code §§8801-8819  
 Complies with Public Resources Code §§8890-8902

PLS Act Ref.:  8765(d)  8771  8773 Other: \_\_\_\_\_

Corner/Monument:  Left as found  Established  Rebuilt  Pre-Construction  
 Found and tagged  Reestablished  Referenced  Post-Construction

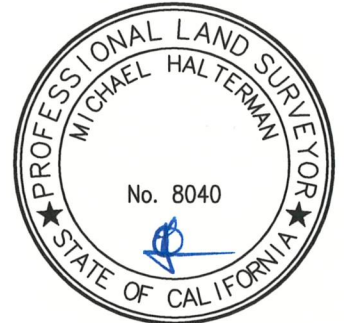
Narrative of corner identified and monument as found and set or reset:  
 See sheet #2 for description(s):

### SURVEYOR'S STATEMENT

This Corner Record was prepared by me or under my direction in conformance with

the Land Surveyor's Act on 2 AUGUST, 2018

Signed [Signature] P.L.S. or R.C.E. No.: 8040



### COUNTY SURVEYOR'S STATEMENT

This Corner Record was received AUGUST 6, 2018 and examined

and filed AUGUST 8, 2018

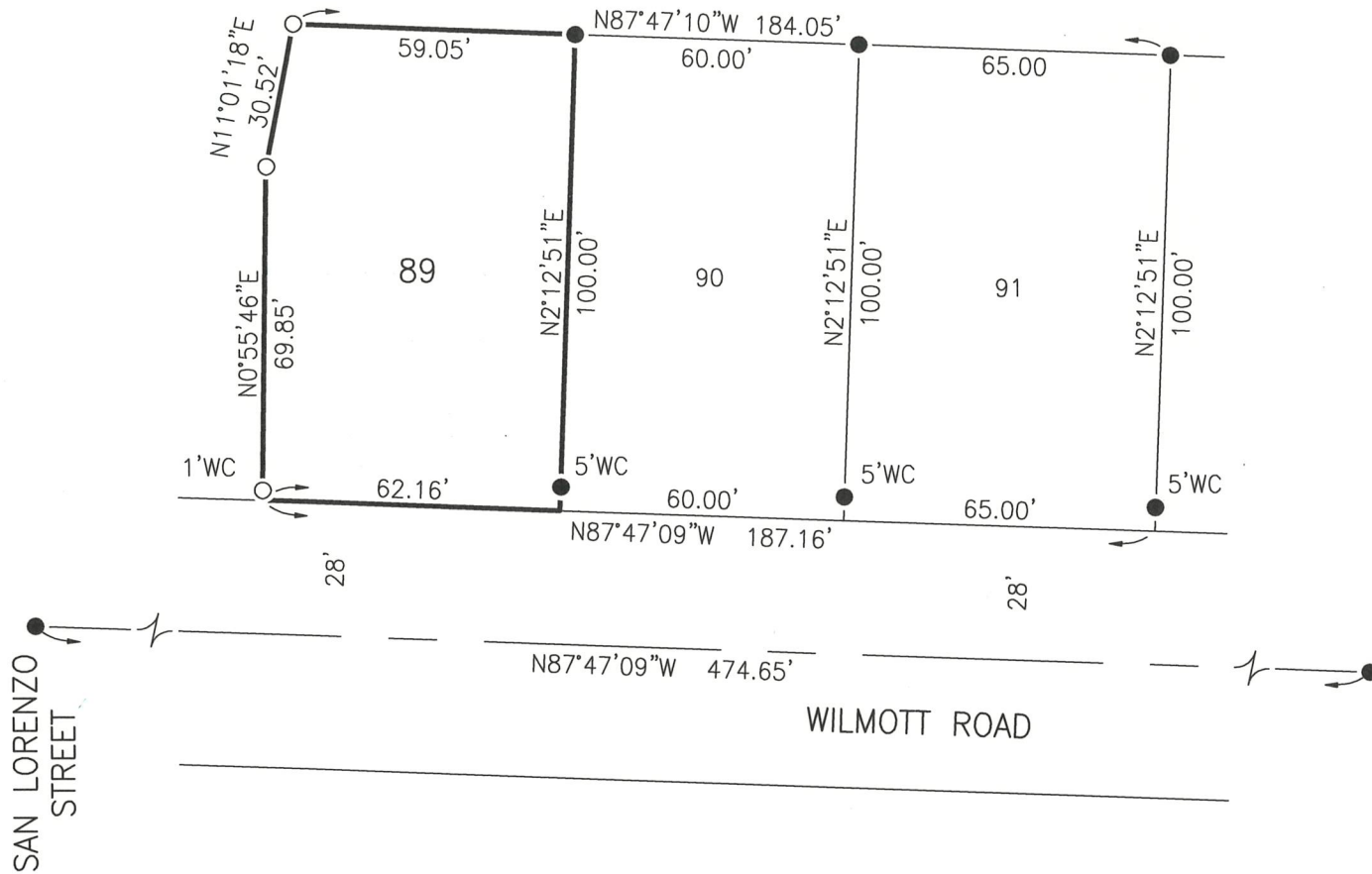
Signed Zach T. Janz P.L.S. or R.C.E. No.: 8664

Title COUNTY SURVEYOR

County Surveyor's Comment \_\_\_\_\_



LOT 2  
72-OP-4



SAN LORENZO STREET

WILMOTT ROAD

REFERENCE

(A) MISSION VILLAGE SOUTH PHASE 2, OFFICIAL PLATS, VOLUME 74, PAGES 34-39

LEGEND:

- FOUND 3/4" IRON PIPE, WITH TAG P.L.S. 7788 AND ACCEPTED AS SHOWN ON REF (A)
- SET 3/4" IRON PIPE TAGGED L.S. 8040, OR AS NOTED
- WC WITNESS CORNER AT DISTANCE NOTED

SCALE

1" = 40'