

CORNER RECORD

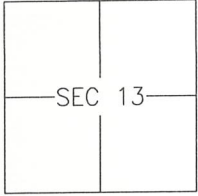
Agency Index 2843-T

Document Number _____

City of LOS BANOS

County of MERCED, California

Brief Legal Description LOT 94 OF MISSION VILLAGE SOUTH, PHASE 2, 74-OP-34



T10S/R10E

CORNER TYPE

- Government Corner Control
 Meander Property
 Rancho Other

Date of Survey 2018-05-16

COORDINATES (Optional)

- N. _____ E. _____
 Elevation _____
 Units Metric U.S. Survey Foot
 Horizontal Datum _____
 Zone _____ Epoch Date _____
 Vertical Datum: _____
 Complies with Public Resources Code §§8801-8819
 Complies with Public Resources Code §§8890-8902

PLS Act Ref.: 8765(d) 8771 8773 Other: _____

Corner/Monument: Left as found Established Rebuilt Pre-Construction
 Found and tagged Reestablished Referenced Post-Construction

Narrative of corner identified and monument as found and set or reset:
 See sheet #2 for description(s):

SURVEYOR'S STATEMENT

This Corner Record was prepared by me or under my direction in conformance with the Land Surveyor's Act on 2 AUGUST, 2018.
 Signed [Signature] P.L.S. or R.C.E. No.: 8040



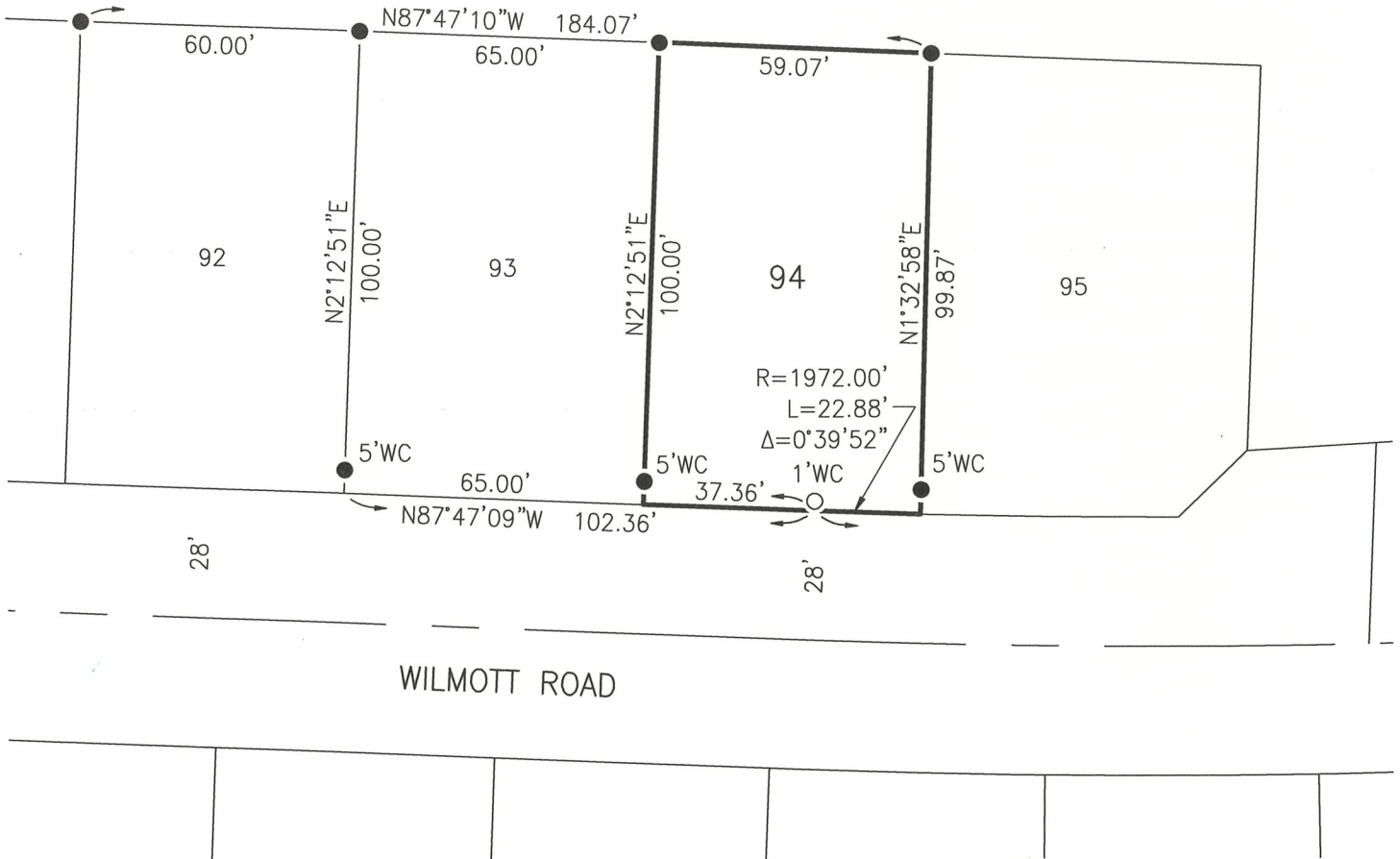
COUNTY SURVEYOR'S STATEMENT

This Corner Record was received AUGUST 6, 2018 and examined and filed AUGUST 8, 2018.
 Signed Zach T. Janz P.L.S. or R.C.E. No.: 8664
 Title COUNTY SURVEYOR



County Surveyor's Comment _____

LOT 2
72-OP-4



WILMOTT ROAD

SCALE

1" = 40'

REFERENCE

(A) MISSION VILLAGE SOUTH PHASE 2, OFFICIAL PLATS, VOLUME 74, PAGES 34-39

LEGEND:

- FOUND 3/4" IRON PIPE, WITH TAG P.L.S. 7788 AND ACCEPTED AS SHOWN ON REF (A)
- SET 3/4" IRON PIPE TAGGED L.S. 8040, OR AS NOTED
- WC WITNESS CORNER AT DISTANCE NOTED