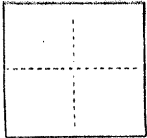


COUNTY OF Merced T. 10 S. R. 10 E. M.D.B. & MERIDIAN CALIFORNIA

CORNER TYPE: GOV'T. CORNER MEANDER RANCHO CONTROL OTHER

CORNER IDENTIFICATION — DATE OF VISIT July 24, 1985



Southwest and Southeast corners of Lot 47, Racquet Club Park Unit No. 1. 24 O.P. 27 M.C.R..

CORNER — LEFT AS FOUND FOUND AND TAGGED REESTABLISHED OBLITERATED CORNER REBUILT

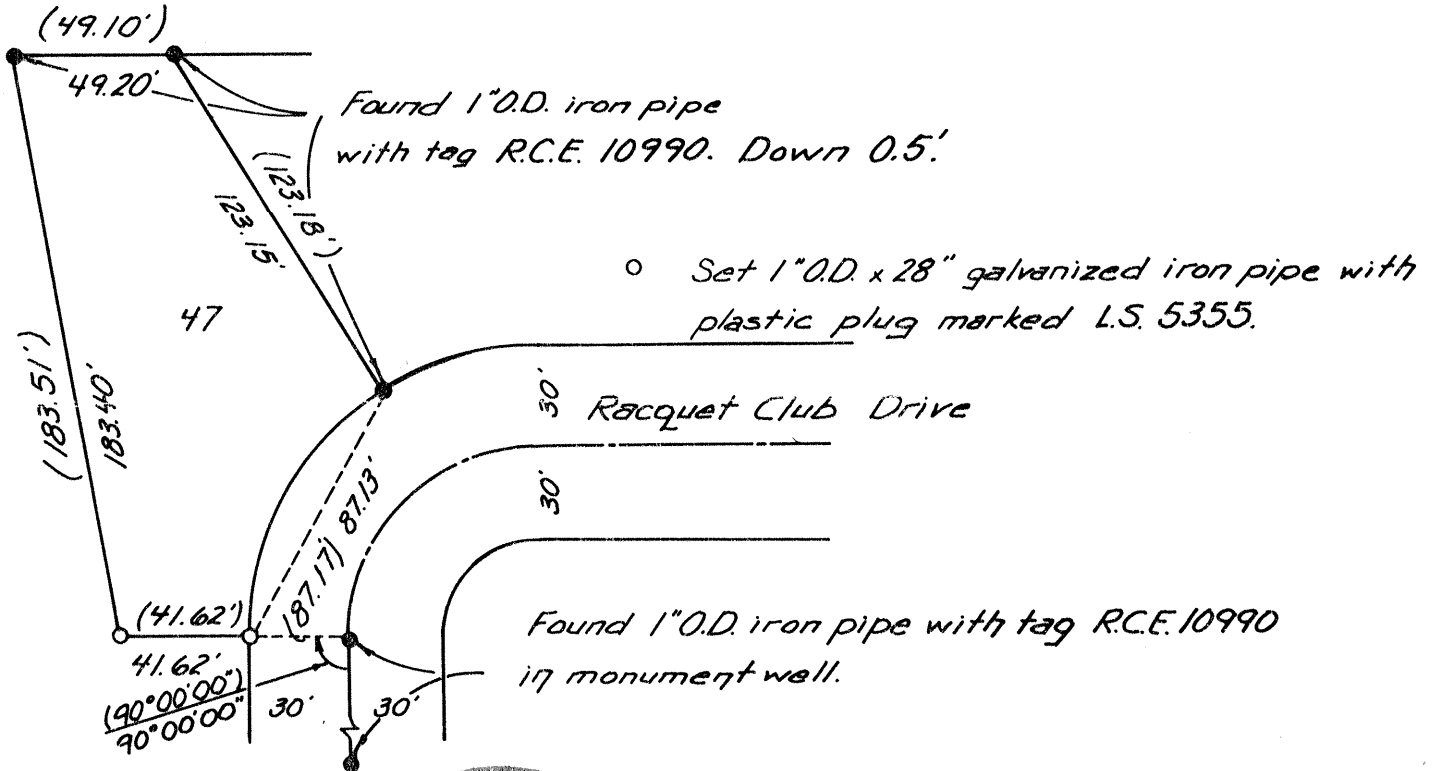
PHYSICAL DESCRIPTION OF CORNER FOUND; EVIDENCE AND METHOD USED TO IDENTIFY OR REESTABLISH

Re-established corners from existing centerline monuments in Racquet Club Drive.

PHYSICAL DESCRIPTION OF MONUMENTS REBUILT OR PERPETUATED

Set a 1" O.D. galvanized iron pipe with plastic plug marked L.S. 5355. 0.5 feet down.

SKETCH: (Include reference tie or witness points, remarks and topo of area)

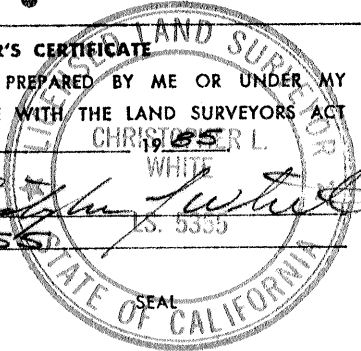


SURVEYOR'S CERTIFICATE

THIS CORNER RECORD WAS PREPARED BY ME OR UNDER MY DIRECTION IN CONFORMANCE WITH THE LAND SURVEYORS ACT ON July 25 1985

SIGNED: Christoph L. White L.S. 5355

L.S. or R.C.E. No.: 5355



COUNTY SURVEYOR'S CERTIFICATE

THE CORNER RECORD WAS RECEIVED _____ 19____ AND EXAMINED AND FILED 7-26 1985

BY: Roy L. Turney

TITLE: Dept. Co. Surveyor

DOCUMENT No. 2843-H

STATEMENT ON BACK OF SHEET

Gordon Gibbs
COUNTY SURVEYOR

YES NO