

CORNER RECORD

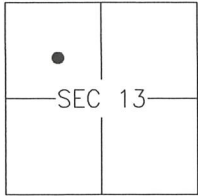
Agency Index 2843-AA

Document Number _____

City of LOS BANOS

County of MERCED, California

Brief Legal Description LOTS 54-56 OF MISSION VILLAGE SOUTH, PHASE 2, 74-OP-34, MCR



CORNER TYPE

- Government Corner Control
 Meander Property
 Rancho Other

Date of Survey 2018-05-16

COORDINATES (Optional)

- N. _____ E. _____
 Elevation _____
 Units Metric U.S. Survey Foot
 Horizontal Datum _____
 Zone _____ Epoch Date _____
 Vertical Datum: _____
 Complies with Public Resources Code §§8801-8819
 Complies with Public Resources Code §§8890-8902

PLS Act Ref.: 8765(d) 8771 8773 Other: _____

Corner/Monument: Left as found Established Rebuilt Pre-Construction
 Found and tagged Reestablished Referenced Post-Construction

Narrative of corner identified and monument as found and set or reset:

See sheet #2 for description(s):

SURVEYOR'S STATEMENT

This Corner Record was prepared by me or under my direction in conformance with the Land Surveyor's Act on 11 APRIL, 2019.

Signed [Signature] P.L.S. or R.C.E. No.: 8040



COUNTY SURVEYOR'S STATEMENT

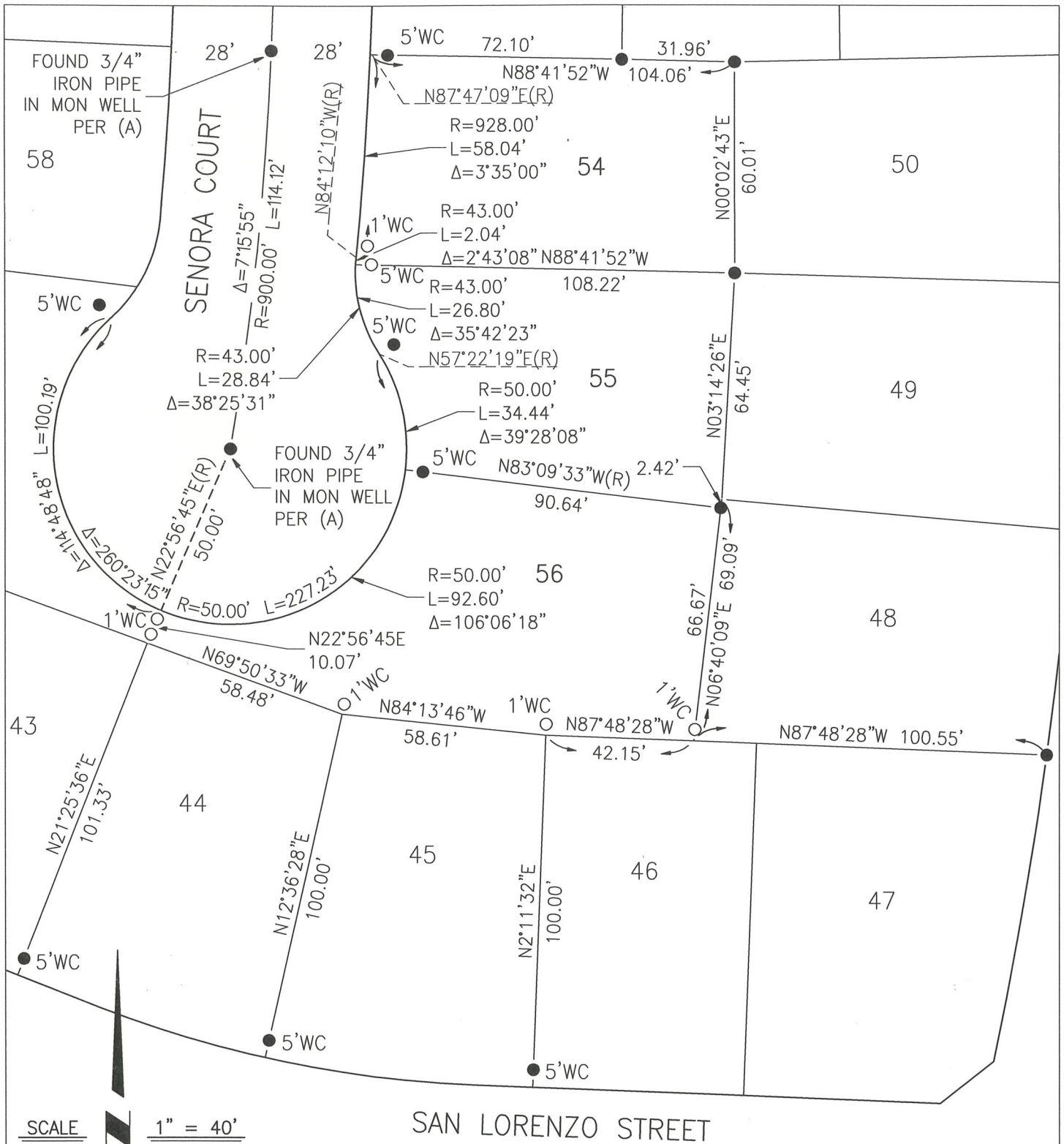
This Corner Record was received APRIL 15, 2019 and examined and filed APRIL 16, 2019.

Signed [Signature] P.L.S. or R.C.E. No.: 8664

Title COUNTY SURVEYOR

County Surveyor's Comment _____





SCALE 1" = 40'

REFERENCE:

(A) MISSION VILLAGE SOUTH, PHASE 2, OFFICIAL PLATS, VOLUME 74, PAGES 34-39, MCR

LEGEND:

- FOUND 3/4" IRON PIPE, TAGGED L.S. 7788, PER (A), M.C.R.
- SET 3/4" IRON PIPE, TAGGED L.S. 8040 AS SHOWN
- WC WITNESS CORNER AT DISTANCE NOTED, ALONG LOT LINE, PROJECTED LOT LINE, OR PERPENDICULAR TO RIGHT-OF-WAY LINE