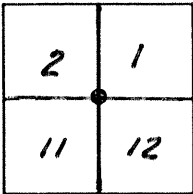


CORNER RECORD

Document Number _____

City of _____ County of MERCED, California

Brief Legal Description N.E. COR. SECT. 11, T. 10S. R. 10E., MDB&M



CORNER TYPE

Government Corner Control
 Meander Property
 Rancho Other
 Date of Survey 1-3-90

COORDINATES (Optional)

N. _____
 E. _____
 Zone _____ Datum _____
 Elev. _____

Corner — Left as found Found and tagged Established Reestablished Rebuilt

Identification and type of corner found: Evidence used to identify or procedure used to establish or reestablish the corner: BRASS DISK WITH +, DOWN 0²⁵ NO ORIGINAL COUNTY TIES REMAIN.

A description of the physical condition of the monument as found and as set or reset: NO LEGIBLE STAMPINGS OTHER THAN +, MONUMENT IS IN GOOD CONDITION.

SURVEYOR'S STATEMENT

This Corner Record was prepared by me or under my direction in conformance with the Land Surveyors' Act on JAN 3 1990.

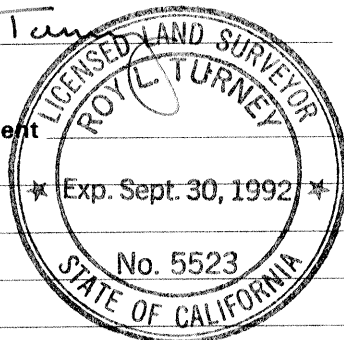
Signed Rap Schaff L.S. or R.C.E. Number LS3730

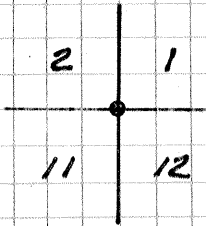
COUNTY SURVEYOR'S STATEMENT

This Corner Record was received 1-24 1990 and examined and filed 1-25 1990.

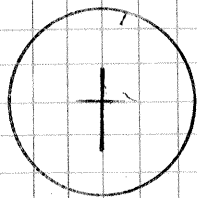
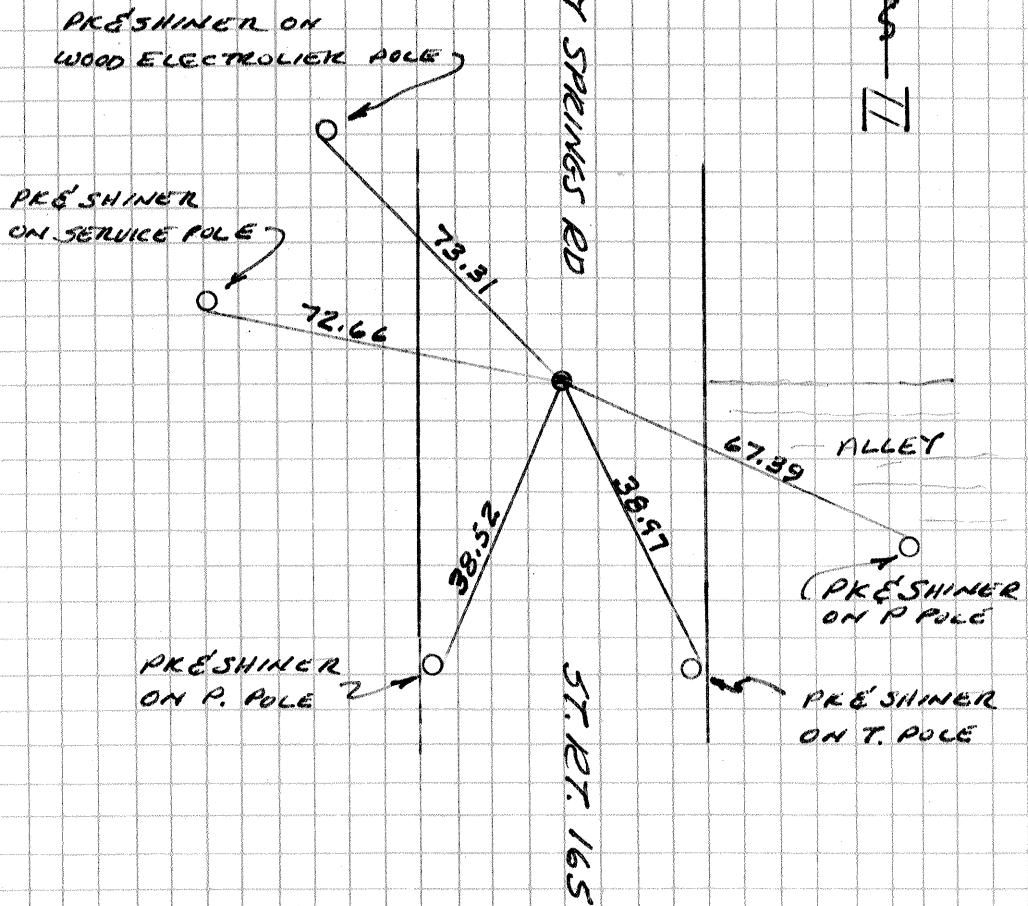
Signed Royal Turney Title Dep Co. Surveyor COR. # 2842

County Surveyor's Comment _____





TIOS RIDE
MOBEM



BRASS DISK
DOWN 0²⁵