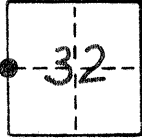


CORNER RECORD

COUNTY OF MERCED T. 5 S. R. 12 E. M. D. B. 6 MERIDIAN CALIFORNIA
 CORNER TYPE: GOVT. CORNER MEANDER RANCHO CONTROL OTHER
 CORNER IDENTIFICATION — DATE OF VISIT DECEMBER 5 1984



W 1/4 Cor. Sec. 32, T. 5 S., R. 12 E.

CORNER — LEFT AS FOUND FOUND AND TAGGED REESTABLISHED OBLITERATED CORNER REBUILT

PHYSICAL DESCRIPTION OF CORNER FOUND; EVIDENCE AND METHOD USED TO IDENTIFY OR REESTABLISH

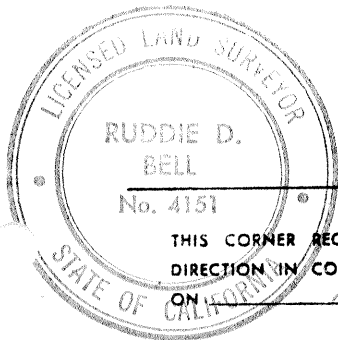
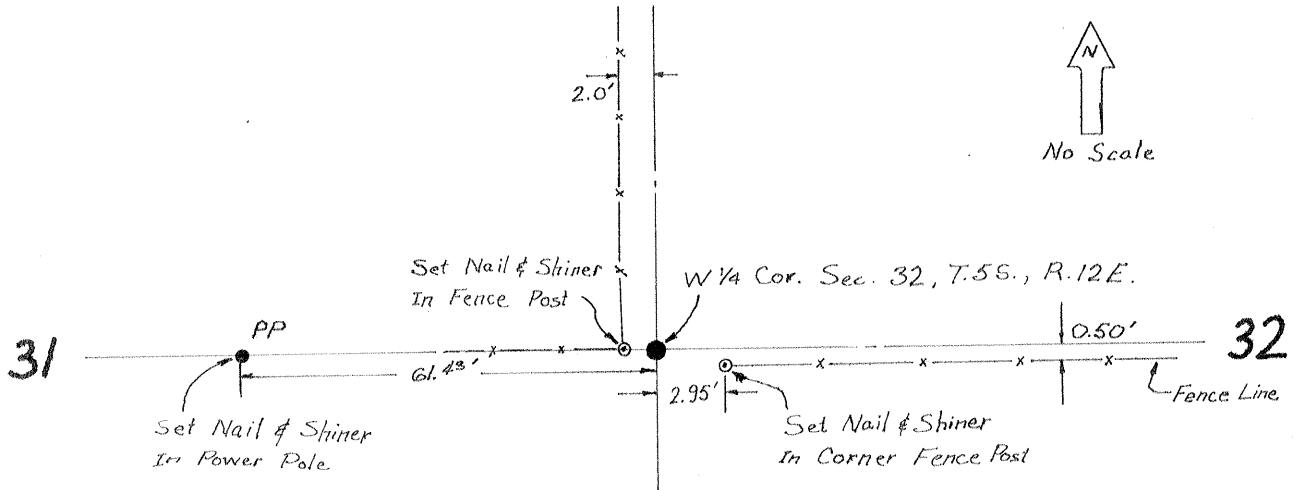
Split Distance Between NE And NW Corners And Set On Line.

PHYSICAL DESCRIPTION OF MONUMENTS REBUILT OR PERPETUATED

Set 30"- 3/4" Iron Pipe Tagged LS 4151 Down 6".

CALIFORNIA COORDINATE SYSTEM ORDER: FIRST SECOND THIRD
 STATIONS USED: NGS (USC & GS) STATE COUNTY OTHER STATION _____ STATION _____
 ZONE _____ ELEVATION _____ NORTHINGS (Y) _____ EASTINGS (X) _____

SKETCH: (Include reference tie or witness points, remarks and topo of area)



SURVEYOR'S CERTIFICATE

THIS CORNER RECORD WAS PREPARED BY ME OR UNDER MY DIRECTION IN CONFORMANCE WITH THE LAND SURVEYORS ACT ON MAR 26 1985

SIGNED: Ruddie D. Bell
 L.S. or R.C.E. No.: LS 4151

SEAL

COUNTY SURVEYOR'S CERTIFICATE

THE CORNER RECORD WAS RECEIVED MARCH 27 1985
 AND EXAMINED AND FILED APRIL 5 1985
 BY: Ray Turney
 TITLE: Dep. Co. Sur.

DOCUMENT No. 2833

STATEMENT ON BACK OF SHEET

YES NO