

2826

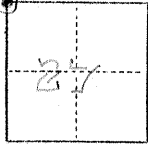
(For Cor Use Only)

### CORNER RECORD

COUNTY OF MERCED T. 8 S. R. 14 E. M. D. B. M. MERIDIAN CALIFORNIA

CORNER TYPE: GOV'T. CORNER  MEANDER  RANCHO  CONTROL  OTHER

CORNER IDENTIFICATION — DATE OF VISIT September 13 19 76



CORNER — LEFT AS FOUND  FOUND AND TAGGED  REESTABLISHED OBLITERATED CORNER  REBUILT

PHYSICAL DESCRIPTION OF CORNER FOUND; EVIDENCE AND METHOD USED TO IDENTIFY OR REESTABLISH

FOUND 1/2" IRON PIPE WITH TAG R.C.E. 16161, APPROXIMATELY 2.5 FEET DOWN. PER COUNTY RECORDS

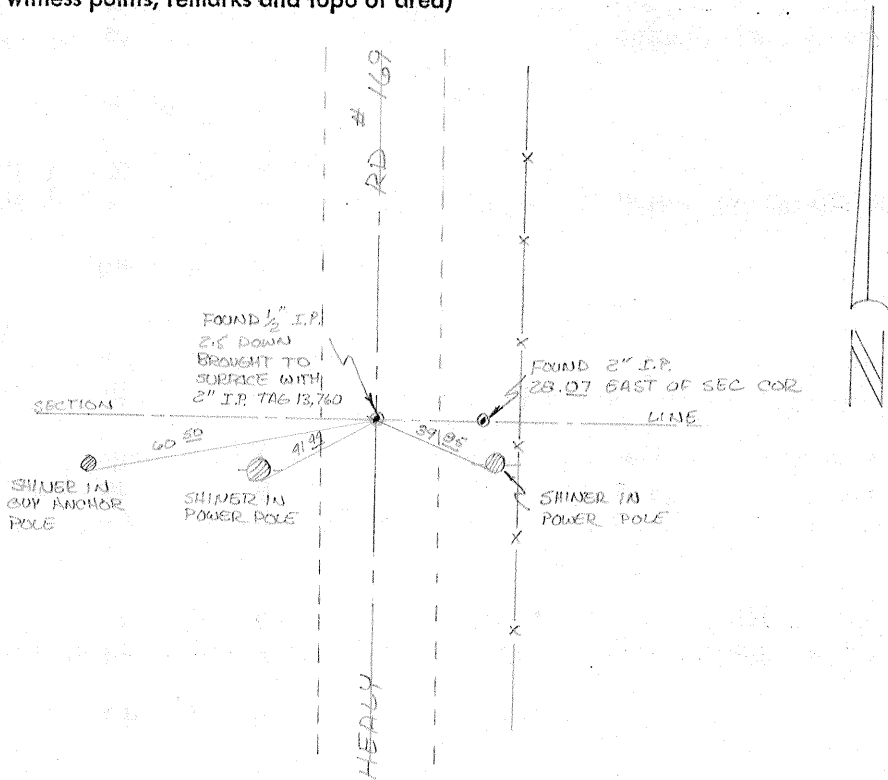
PHYSICAL DESCRIPTION OF MONUMENTS REBUILT OR PERPETUATED

FOUND PIPE, BROUGHT TO SURFACE OF NEW ROAD WITH 2" X 36" IRON PIPE TAG R.C.E. 13,760

CALIFORNIA COORDINATE SYSTEM ORDER: FIRST  SECOND  THIRD   
STATIONS USED: NGS (USC & GS)  STATE  COUNTY  OTHER  STATION \_\_\_\_\_ STATION \_\_\_\_\_  
ZONE \_\_\_\_\_ ELEVATION \_\_\_\_\_ NORTHINGS (Y) \_\_\_\_\_ EASTINGS (X) \_\_\_\_\_

(Fold)

SKETCH: (Include reference tie or witness points, remarks and topo of area)



SURVEYOR'S CERTIFICATE

THIS CORNER RECORD WAS PREPARED BY ME OR UNDER MY DIRECTION IN CONFORMANCE WITH THE LAND SURVEYORS ACT ON \_\_\_\_\_ 19\_\_\_\_.

SIGNED: \_\_\_\_\_

L.S. or R.C.E. No.: \_\_\_\_\_

SEAL

COUNTY SURVEYOR'S CERTIFICATE

THE CORNER RECORD WAS RECEIVED \_\_\_\_\_ 19\_\_\_\_

AND EXAMINED AND FILED \_\_\_\_\_ 19\_\_\_\_

BY: \_\_\_\_\_

TITLE: \_\_\_\_\_

DOCUMENT No. 2826

STATEMENT ON BACK OF SHEET

YES  NO