

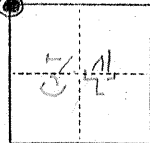
No 2825

CORNER RECORD

COUNTY OF MERCED T. 8 S. R. 14 E. M.D.B.M. MERIDIAN CALIFORNIA

CORNER TYPE: GOV'T. CORNER [X] MEANDER [] RANCHO [] CONTROL [] OTHER []

CORNER IDENTIFICATION - DATE OF VISIT September 19 76



CORNER - LEFT AS FOUND [] FOUND AND TAGGED [] REESTABLISHED OBLITERATED CORNER [] REBUILT [X]

PHYSICAL DESCRIPTION OF CORNER FOUND; EVIDENCE AND METHOD USED TO IDENTIFY OR REESTABLISH

Found 1" Iron Rod. Per county records approximate-ly 2.5 Feet down.

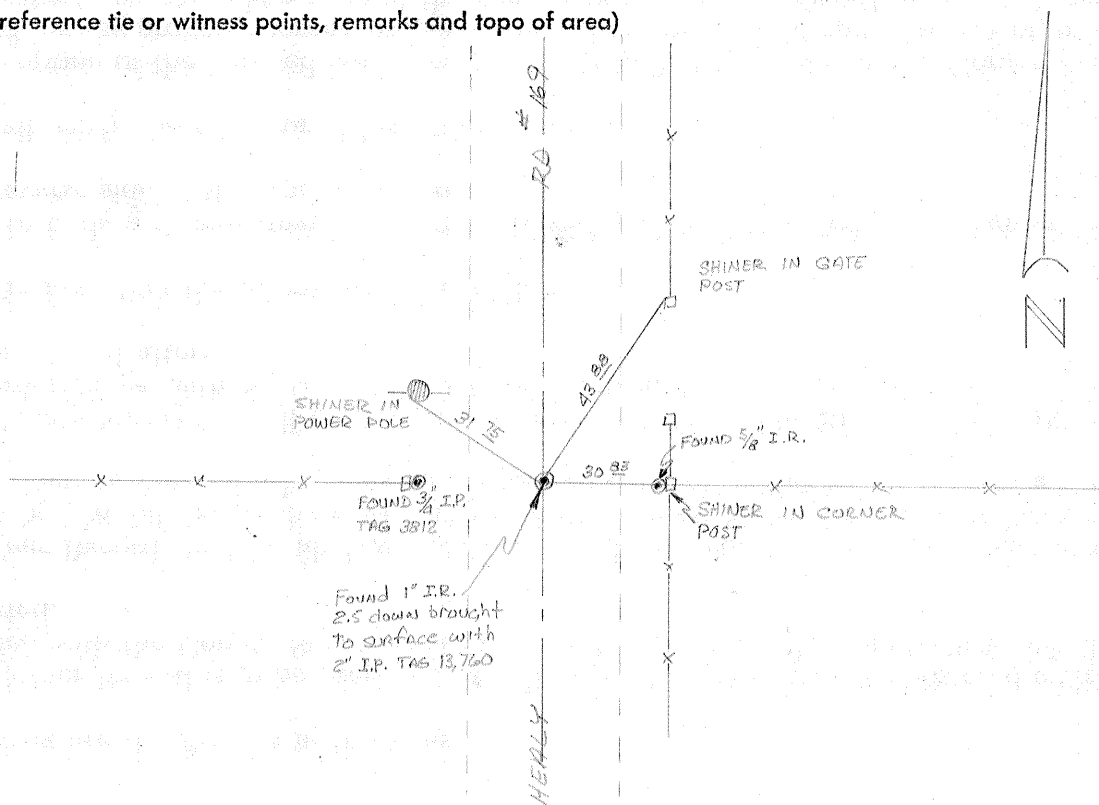
PHYSICAL DESCRIPTION OF MONUMENTS REBUILT OR PERPETUATED

Found rod brought to surface of new road with 2" x 36" Iron Pipe, TAGGED R.C.E., 13,760

CALIFORNIA COORDINATE SYSTEM ORDER: FIRST [] SECOND [] THIRD [] STATIONS USED: NGS (USC & GS) [] STATE [] COUNTY [] OTHER [] STATION STATION ZONE ELEVATION NORTHINGS (Y) EASTINGS (X)

(Fold)

SKETCH: (Include reference tie or witness points, remarks and topo of area)



SURVEYOR'S CERTIFICATE

THIS CORNER RECORD WAS PREPARED BY ME OR UNDER MY DIRECTION IN CONFORMANCE WITH THE LAND SURVEYORS ACT ON 19

SIGNED: _____

L.S. or R.C.E. No.: _____

SEAL

COUNTY SURVEYOR'S CERTIFICATE

THE CORNER RECORD WAS RECEIVED 19 AND EXAMINED AND FILED 19

BY: _____

TITLE: _____

DOCUMENT No. 2825

STATEMENT ON BACK OF SHEET

YES [] NO []