

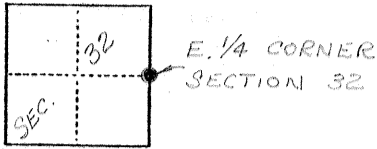
NO 2023

# CORNER RECORD

COUNTY OF MERCED T. 6S. R. 14E M.D.B.E. MERIDIAN CALIFORNIA

CORNER TYPE: GOV'T. CORNER  MEANDER  RANCHO  CONTROL  OTHER

CORNER IDENTIFICATION — DATE OF VISIT 4-2 19 75



CORNER — LEFT AS FOUND  FOUND AND TAGGED  REESTABLISHED OBLITERATED CORNER  REBUILT

PHYSICAL DESCRIPTION OF CORNER FOUND; EVIDENCE AND METHOD USED TO IDENTIFY OR REESTABLISH

*FD. 5/8" I.R. 0.5 FOOT DOWN WITH TIES IN MERCED COUNTY ROAD DEPT. IN FIELD BOOK NUMBER 709 PG 1*

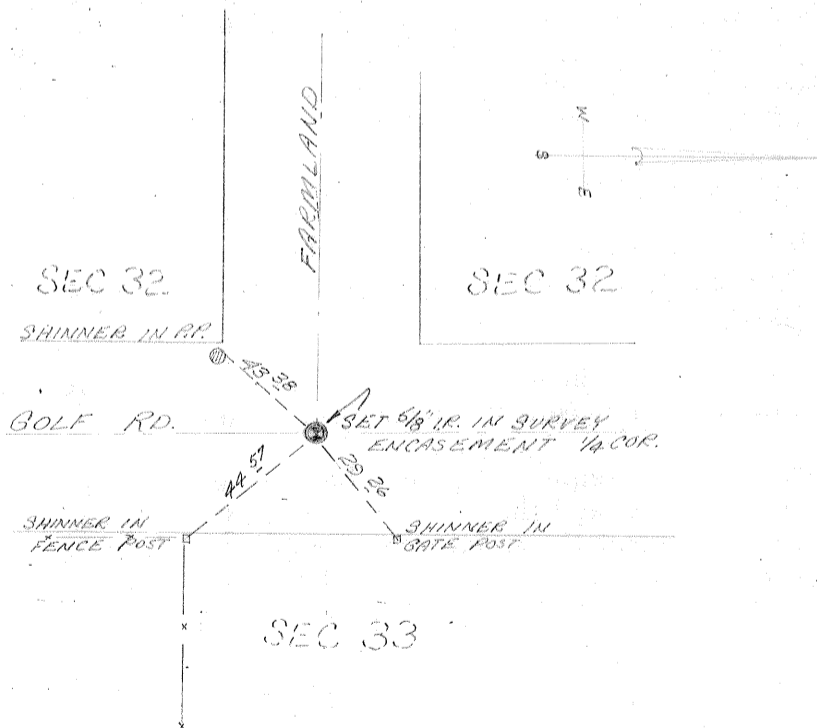
PHYSICAL DESCRIPTION OF MONUMENTS REBUILT OR PERPETUATED

*RESET 5/8" I.R. TAGGED R.C.E. NO. 13760 IN SURVEY ENCASUREMENT*

CALIFORNIA COORDINATE SYSTEM ORDER: FIRST  SECOND  THIRD   
STATIONS USED: NGS (USC & GS)  STATE  COUNTY  OTHER  STATION \_\_\_\_\_ STATION \_\_\_\_\_  
ZONE \_\_\_\_\_ ELEVATION \_\_\_\_\_ NORTHINGS (Y) \_\_\_\_\_ EASTINGS (X) \_\_\_\_\_

(Fold)

SKETCH: (Include reference tie or witness points, remarks and topo of area)



### SURVEYOR'S CERTIFICATE

THIS CORNER RECORD WAS PREPARED BY ME OR UNDER MY DIRECTION IN CONFORMANCE WITH THE LAND SURVEYORS ACT ON \_\_\_\_\_ 19\_\_\_\_

SIGNED: \_\_\_\_\_

L.S. or R.C.E. No.: \_\_\_\_\_

SEAL

### COUNTY SURVEYOR'S CERTIFICATE

THE CORNER RECORD WAS RECEIVED \_\_\_\_\_ 19\_\_\_\_ AND EXAMINED AND FILED \_\_\_\_\_ 19\_\_\_\_

BY: \_\_\_\_\_

TITLE: \_\_\_\_\_

DOCUMENT No. 2823

STATEMENT ON BACK OF SHEET

YES  NO