

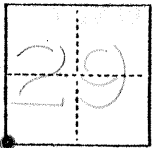
2820

# CORNER RECORD

NTY OF MERCED T. 6S R. 14E M.D.B.S. MERIDIAN CALIFORNIA

CORNER TYPE: GOV'T. CORNER  MEANDER  RANCHO  CONTROL  OTHER

CORNER IDENTIFICATION — DATE OF VISIT DEC 5 1975



SOUTH WEST CORNER OF SECTION 29  
(SECTION CORNER)

CORNER — LEFT AS FOUND  FOUND AND TAGGED  REESTABLISHED OBLITERATED CORNER  REBUILT

PHYSICAL DESCRIPTION OF CORNER FOUND; EVIDENCE AND METHOD USED TO IDENTIFY OR REESTABLISH

FD. 3/4" IRON Pipe with TAG C888, 2" DOWN USED  
SWING TIES IN BK 51 PG 73 MERCED COUNTY  
PUBLIC WORKS DEPT. - ROAD DIVISION.

PHYSICAL DESCRIPTION OF MONUMENTS REBUILT OR PERPETUATED

BROUGHT TO SURFACE with 2" IRON PIPE with TAG  
RCE 18760 IN SURVEY ENCASUREMENT

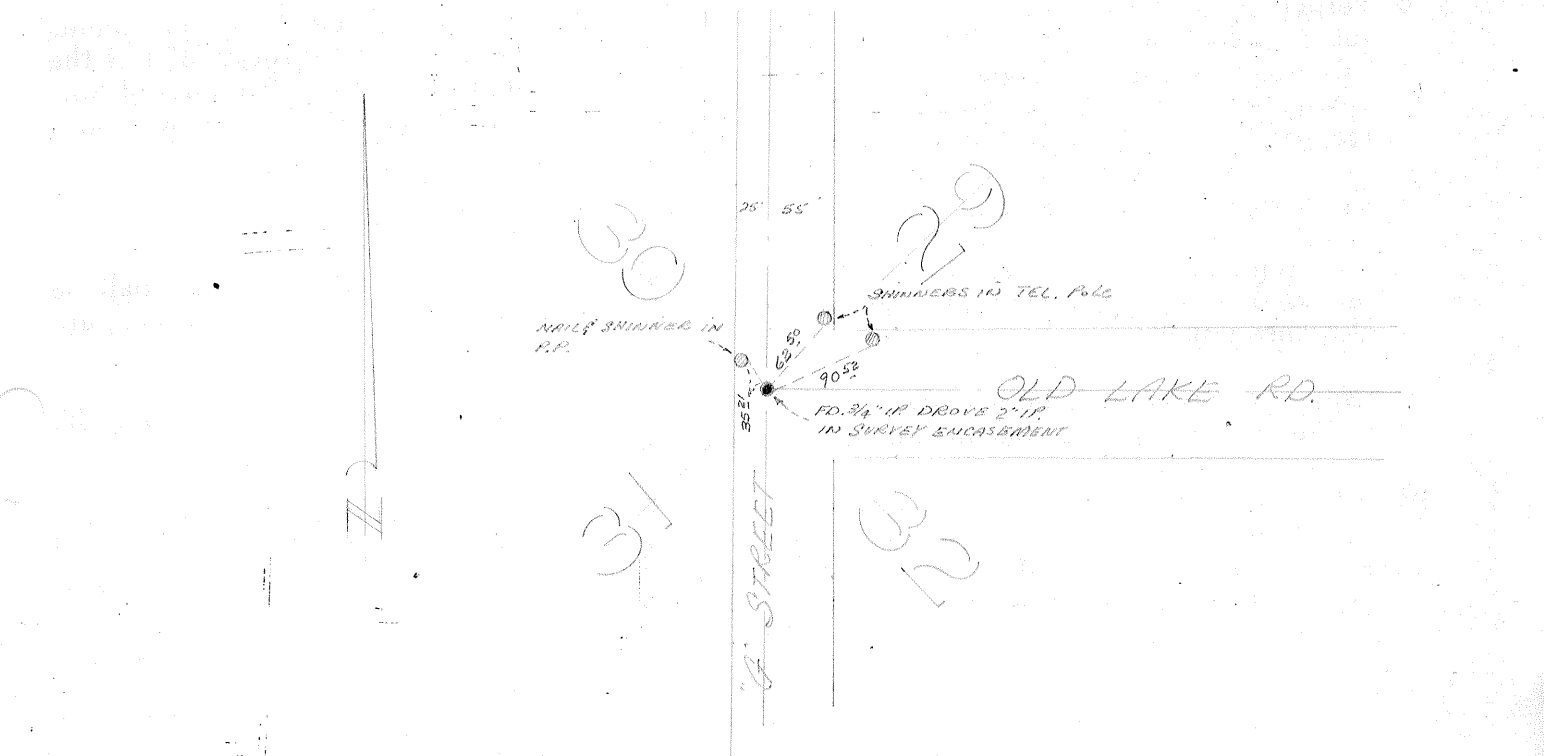
CALIFORNIA COORDINATE SYSTEM ORDER: FIRST  SECOND  THIRD

STATIONS USED: NGS (USC & GS)  STATE  COUNTY  OTHER  STATION \_\_\_\_\_ STATION \_\_\_\_\_

ZONE \_\_\_\_\_ ELEVATION \_\_\_\_\_ NORTHINGS (Y) \_\_\_\_\_ EASTINGS (X) \_\_\_\_\_

(Fold)

SKETCH: (Include reference tie or witness points, remarks and topo of area)



### SURVEYOR'S CERTIFICATE

THIS CORNER RECORD WAS PREPARED BY ME OR UNDER MY DIRECTION IN CONFORMANCE WITH THE LAND SURVEYORS ACT ON \_\_\_\_\_ 19\_\_\_\_.

SIGNED: \_\_\_\_\_

L.S. or R.C.E. No.: \_\_\_\_\_

SEAL

### COUNTY SURVEYOR'S CERTIFICATE

THE CORNER RECORD WAS RECEIVED \_\_\_\_\_ 19\_\_\_\_ AND EXAMINED AND FILED \_\_\_\_\_ 19\_\_\_\_.

BY: \_\_\_\_\_

TITLE: \_\_\_\_\_

DOCUMENT No. 2820

STATEMENT ON BACK OF SHEET

YES  NO