

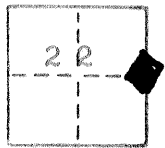
CORNER RECORD

08-22-72

COUNTY OF Merced T. 12 S R. 8 E Mt. Diablo MERIDIAN CALIFORNIA

CORNER TYPE: GOVT. CORNER MEANDER RANCHO CONTROL OTHER

CORNER IDENTIFICATION — DATE OF VISIT June 11 1982



1/4 Corner 22 | 23

CORNER — LEFT AS FOUND FOUND AND TAGGED REESTABLISHED OBLITERATED CORNER REBUILT

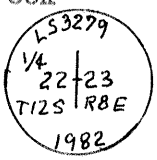
PHYSICAL DESCRIPTION OF CORNER FOUND; EVIDENCE AND METHOD USED TO IDENTIFY OR REESTABLISH

Found a very old ranch fence corner, Fence runs South, West, and East. it is my finding that this fence corner is the perpetuation of the location of the original 1/4 Corner set in 1875. This corner is in good cardinal alignment with other found corners.

PHYSICAL DESCRIPTION OF MONUMENTS REBUILT OR PERPETUATED

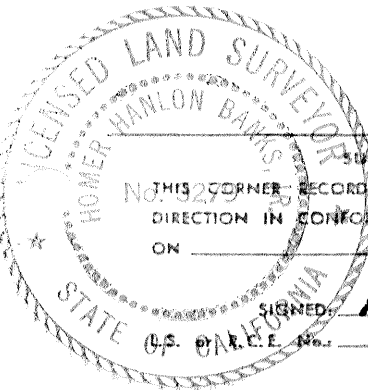
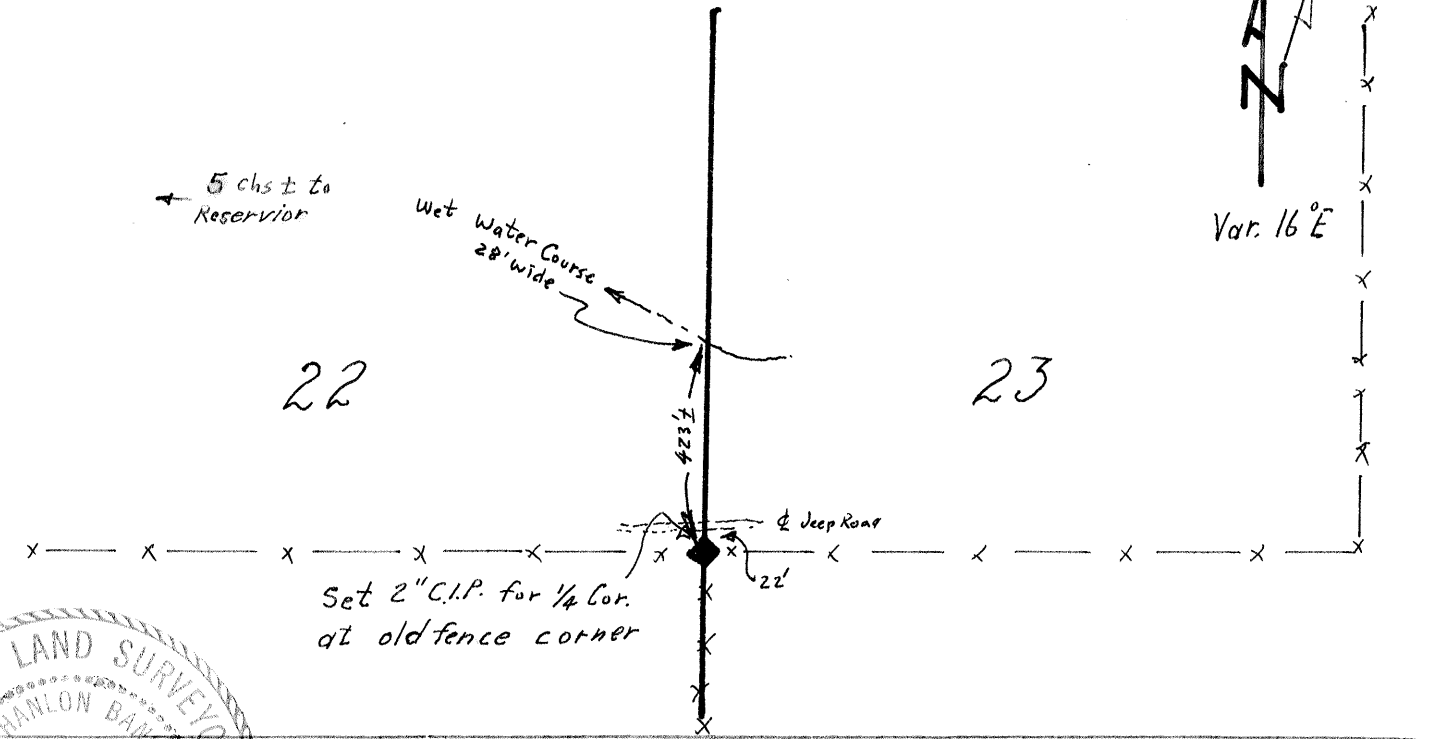
Set 2" C.I.P. on the east side of the corner fence post and a large quartz rock anchoring the corner post. This corner is on the south side of a jeep road and on a gentle north slope.

1/4 Cor. pipe stamped →



CALIFORNIA COORDINATE SYSTEM ORDER: FIRST SECOND THIRD
 STATIONS USED: NGS (USC & GS) STATE COUNTY OTHER STATION _____ STATION _____
 ZONE _____ ELEVATION 1300 + NORTHINGS (Y) _____ EASTINGS (X) _____

SKETCH: (Include reference tie or witness points, remarks and topo of area)



SURVEYOR'S CERTIFICATE
 THIS CORNER RECORD WAS PREPARED BY ME OR UNDER MY DIRECTION IN CONFORMANCE WITH THE LAND SURVEYORS ACT ON June 23, 1982
 SIGNED: Homer Banks Jr.
 U.S. PATENT No. L.S. 3279

COUNTY SURVEYOR'S CERTIFICATE
 THE CORNER RECORD WAS RECEIVED Aug. 12, 1982
 AND EXAMINED AND FILED May 25, 1982
 BY: [Signature]
 TITLE: County Surveyor
 DOCUMENT No. 2811A

STATEMENT ON BACK OF SHEET YES NO

REPORTED RECOVERIES ARE IN DISPUTE WITH RECORD OF SURVEY
FILED FEBRUARY 16, 1982 IN BOOK 19 AT PAGE 34 OF SURVEYS.