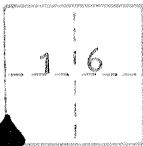
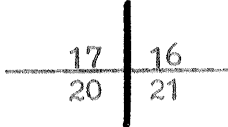


CORNER RECORD

COUNTY OF Merced T. 12 S R. 8 E Mt. Diablo MERIDIAN CALIFORNIA  
 CORNER TYPE: GOV'T. CORNER  MEANDER  RANCHO  CONTROL  OTHER   
 CORNER IDENTIFICATION - DATE OF VISIT June 4, 1982



Section corner



CORNER - LEFT AS FOUND  FOUND AND TAGGED  REESTABLISHED OBLITERATED CORNER  RESULT

PHYSICAL DESCRIPTION OF CORNER FOUND; EVIDENCE AND METHOD USED TO IDENTIFY OR REESTABLISH

Ran a compass line East from the  $\frac{1}{4}$  corner 17/20 and found an old fence line on line east of the old "Blacklock" house. The house was on the SW side of two old fig trees and SE of a large cottonwood according to local testimony, and proved true in the field. The BT called for this corner has been gone a long time and only very faint evidence remains. The BT used by LS 4156 is much too old and had no evidence of a BT blaze when opened up at his request.

PHYSICAL DESCRIPTION OF MONUMENTS RESULT OR PERPETUATED

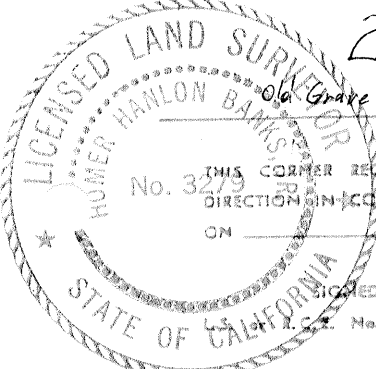
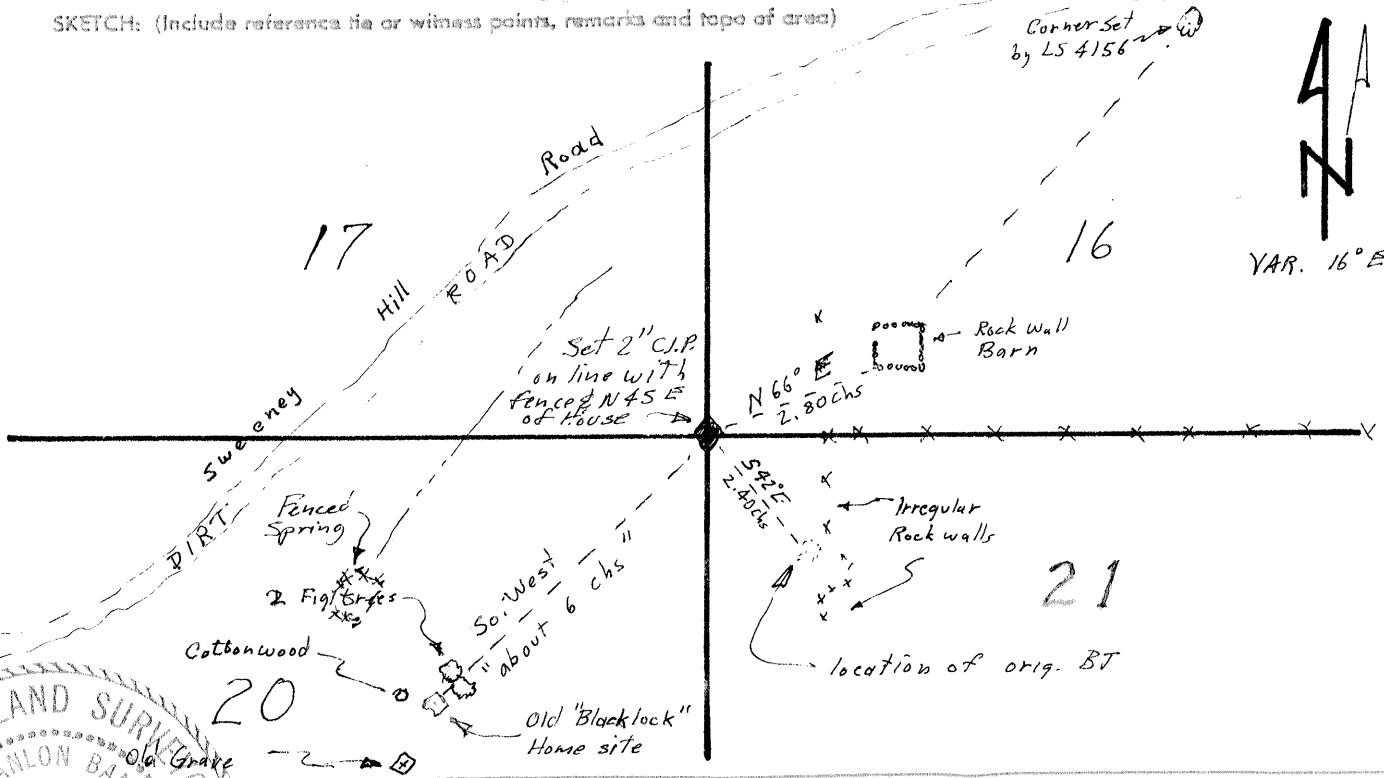
Set 2" C.I.P. northeast about 6 chs in accordance with the G.L.O. notes, from the house and on line of the old section line fence. We built up a rock mound around the pipe.

From which the SW corner of an old rock barn bears N 66° E 2.80 chs. (This same rock barn is used as the "house" for corner identification on Rec. of Surv. # 19-34, corner "H".)



CALIFORNIA COORDINATE SYSTEM ORDER: FIRST  SECOND  THIRD   
 STATIONS USED: MGS (USC & GS)  STATE  COUNTY  OTHER  STATION \_\_\_\_\_ STATION \_\_\_\_\_  
 ZONE \_\_\_\_\_ ELEVATION 1450± NORTHINGS (7) \_\_\_\_\_ EASTINGS (X) \_\_\_\_\_

SKETCH: (Include reference tie or witness points, remarks and topo of area)



SURVEYOR'S CERTIFICATE  
 THIS CORNER RECORD WAS PREPARED BY ME OR UNDER MY DIRECTION IN CONFORMANCE WITH THE LAND SURVEYORS ACT ON June 21, 1982  
 SIGNED: Homer Banks Jr.  
 L.S. No. LS 3279

COUNTY SURVEYOR'S CERTIFICATE  
 THE CORNER RECORD WAS RECEIVED Aug. 12, 1982  
 AND EXAMINED AND FILED May 25, 1983  
 BY: [Signature]  
 TITLE: County Surveyor  
 DOCUMENT No. 2810A  
 STATEMENT ON BACK OF SHEET

REPORTED RECOVERIES ARE IN DISPUT WITH RECORD OF SURVEY  
FILED FEBRUARY 16, 1982 IN BOOK 19 AT PAGE 34 OF SURVEYS.