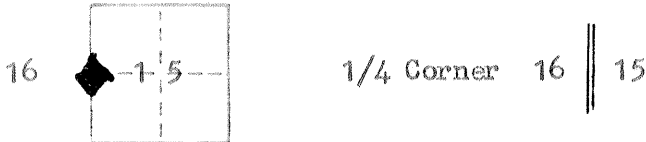


CORNER RECORD

COUNTY OF Merced T. 12S R. 8 E Mt. Diablo MERIDIAN CALIFORNIA
 CORNER TYPE: GOVT. CORNER MEANDER RANCHO CONTROL OTHER
 CORNER IDENTIFICATION — DATE OF VISIT June 11, 1982

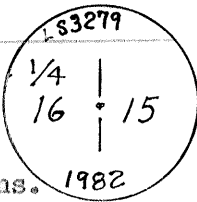


CORNER — LEFT AS FOUND FOUND AND TAGGED REESTABLISHED OBLITERATED CORNER RESULT

PHYSICAL DESCRIPTION OF CORNER FOUND; EVIDENCE AND METHOD USED TO IDENTIFY OR REESTABLISH
 Found overgrown blaze with flat face on S 65° E face of 22" Blue Oak (Q. Douglasii). This is in the wrong quadrant according to the G. L.O. notes. Since the Deputies' instructions required the blaze to face the corner, I checked out a location S 65° E 1.00 Chs from the found B. T. At this ^{site} stump hole bears S 60° E 72 Lks confirming the use of the blaze facing for direction to the corner. No sign of the rock mound was found.

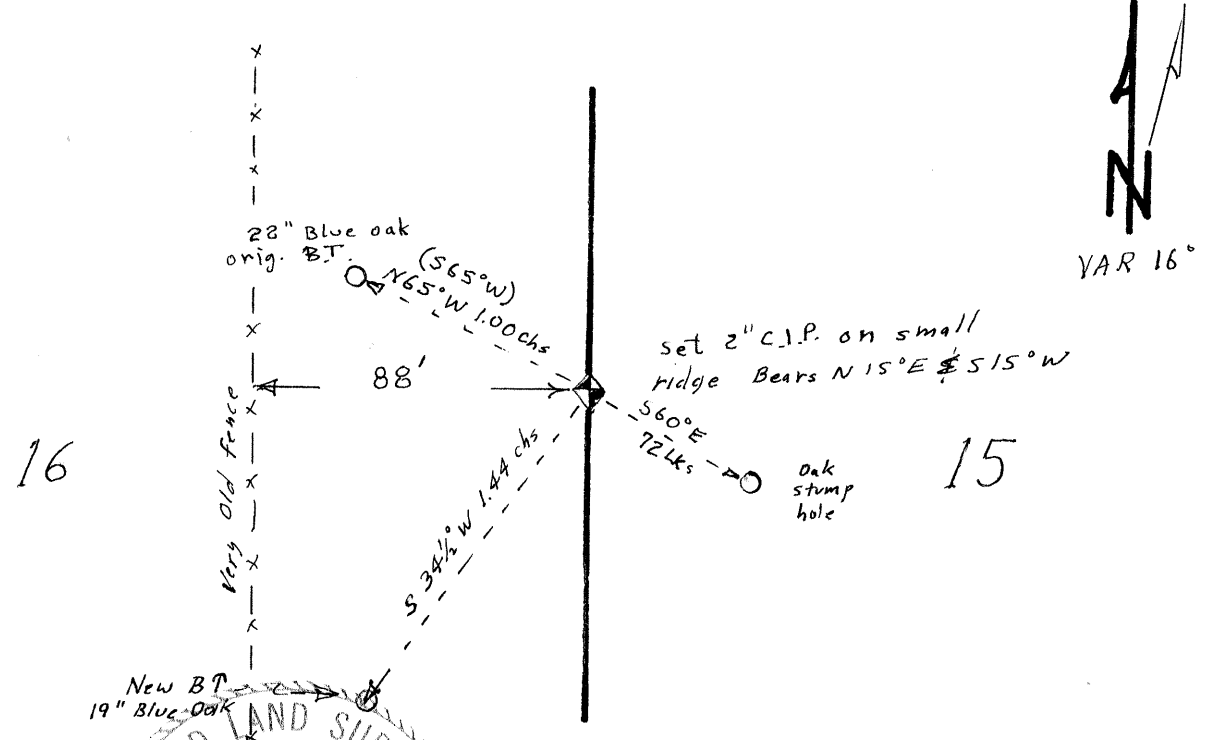
PHYSICAL DESCRIPTION OF MONUMENTS RESULT OR PERPETUATED

Set 2" C.I.P. S65°E 1.00 Chs. from original Bearing Tree stamped—
 From which I blazed a 19" Blue Oak (Q. Douglasii) " 1/4 S B T " S. 34 1/2° W 1.44 Chs. at
 This site is approx. 40 chs. south of the fence corner / the cor. common to sects. 9, 10, 15, 16 and is several hundred feet north of the old fences leading east.

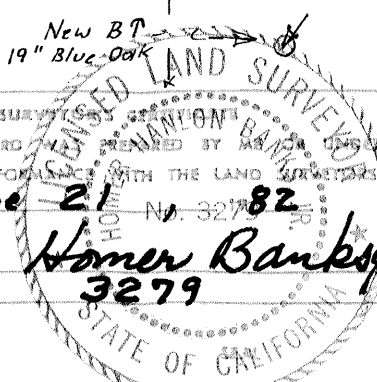


CALIFORNIA COORDINATE SYSTEM ORDER: FIRST SECOND THIRD
 STATIONS USED: NGS (USC & GS) STATE COUNTY OTHER STATION _____ STATION _____
 ZONE _____ ELEVATION 1300± NORTHINGS (Y) _____ EASTINGS (X) _____

SKETCH: (Include reference tie or witness points, remarks and topo of area)



SURVEYED AND FOUND BY ME AND UNDER MY DIRECTION IN CONFORMANCE WITH THE LAND SURVEYORS ACT ON June 21, 1982 No. 3279
 SIGNED: Homer Banks
 L.S. No. 3279



COUNTY SURVEYOR'S CERTIFICATE
 THE CORNER RECORD WAS RECEIVED Aug. 12, 1983
 AND EXAMINED AND FILED May 25, 1983
 BY: [Signature]
 TITLE: County Surveyor
 DOCUMENT No. 2809A
 STATEMENT ON BACK OF SHEET YES NO

REPORTED RECOVERIES ARE IN DISPUTE WITH RECORD OF SURVEY
FILED FEBRUARY 16, 1982 IN BOOK 19 AT PAGE 34 OF SURVEYS.