

CORNER RECORD

COUNTY OF Merced T. 12S R. 8 E Mt. Diablo MERIDIAN CALIFORNIA
 CORNER TYPE: GOVT. CORNER MEANDER LANCHEO CONTROL OTHER
 CORNER IDENTIFICATION — DATE OF VISIT June 4, 1982



1/4 Corner 10
15

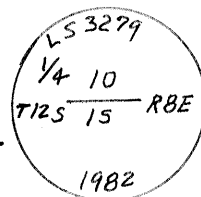
CORNER — LEFT AS FOUND FOUND AND TAGGED REESTABLISHED OBLITERATED CORNER RESULT

PHYSICAL DESCRIPTION OF CORNER FOUND; EVIDENCE AND METHOD USED TO IDENTIFY OR REESTABLISH

Found the original BT at S 15° E 64 lks, a 24" Blue Oak in a E-W fence line marked with an overgrown blaze, the letter "A" on the NE face, the letter "H" on the NW face. From the site N 15° W 64 lks of the above BT a stump hole bears N 72° W 38 lks as called in the GLO notes for the other BT.

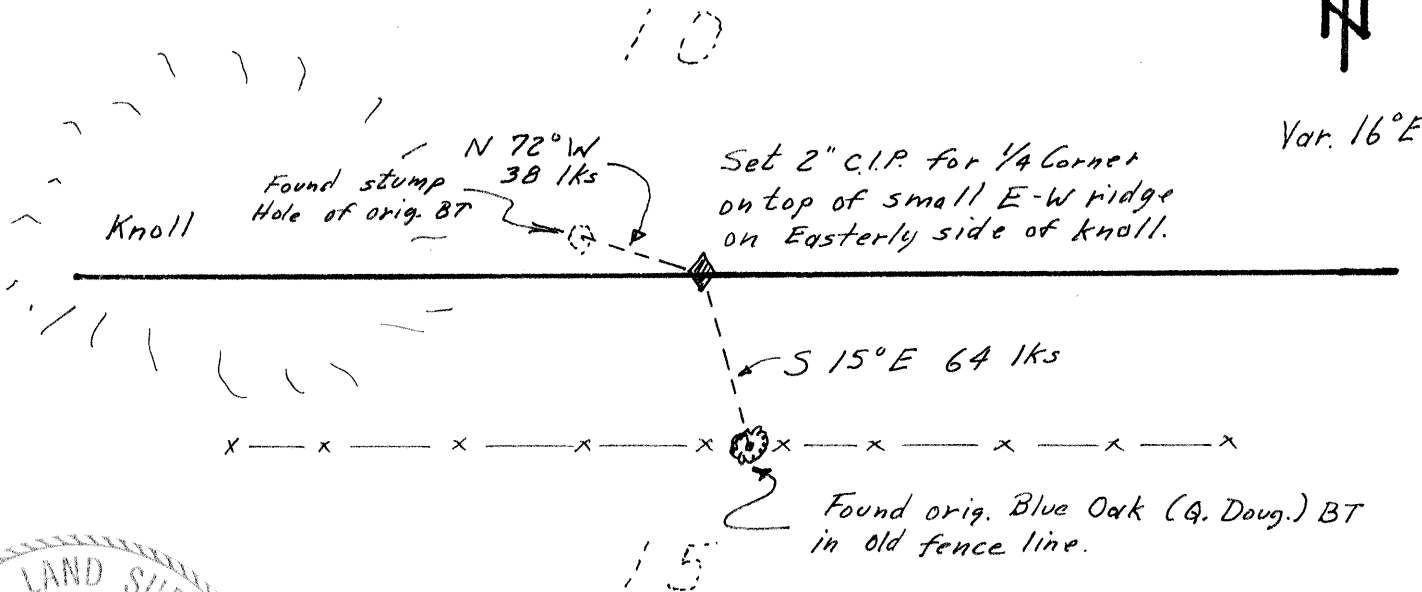
PHYSICAL DESCRIPTION OF MONUMENTS RESULT OR PERPETUATED

Set 2" C.I.P. N 15° W 64 lks from the found original BT.



CALIFORNIA COORDINATE SYSTEM ORDER: FIRST SECOND THIRD
 STATIONS USED: NGS (USC & GS) STATE COUNTY OTHER STATION _____ STATION _____
 ZONE _____ ELEVATION 1370 ± NORTHINGS (Y) _____ EASTINGS (X) _____

SKETCH: (Include reference tie or witness points, remarks and topo of area)



SURVEYOR'S CERTIFICATE
 THIS CORNER RECORD WAS PREPARED BY ME OR UNDER MY
 No. 3279 IN CONFORMANCE WITH THE LAND SURVEYORS ACT
 ON June 22, 1982
 SIGNED: Homer Banks Jr.
 License No. LS 3279

COUNTY SURVEYOR'S CERTIFICATE
 THE CORNER RECORD WAS RECEIVED Aug. 12, 1983
 AND EXAMINED AND FILED May 25, 1983
 BY: [Signature]
 TITLE: County Surveyor
 DOCUMENT No. 2808A
 STATEMENT ON BACK OF SHEET YES NO

REPORTED RECOVERIES ARE IN DISPUTE WITH RECORD OF SURVEY
FILED FEBRUARY 16, 1982 IN BOOK 19 AT PAGE 34 OF SURVEYS.