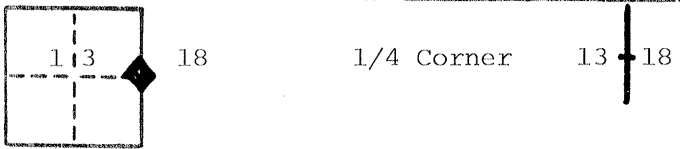


CORNER RECORD

COUNTY OF Merced T. 12 S R. 8 & 9 E Mt. Diablo MERIDIAN CALIFORNIA
 CORNER TYPE: GOV'T. CORNER MEANDER RANCHO CONTROL OTHER
 CORNER IDENTIFICATION — DATE OF VISIT June 4, 1982



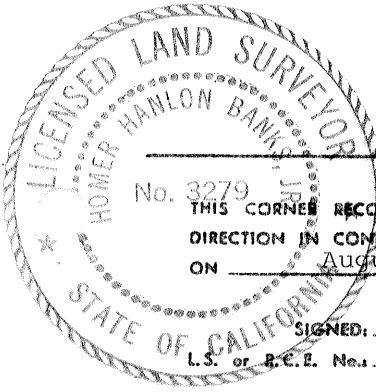
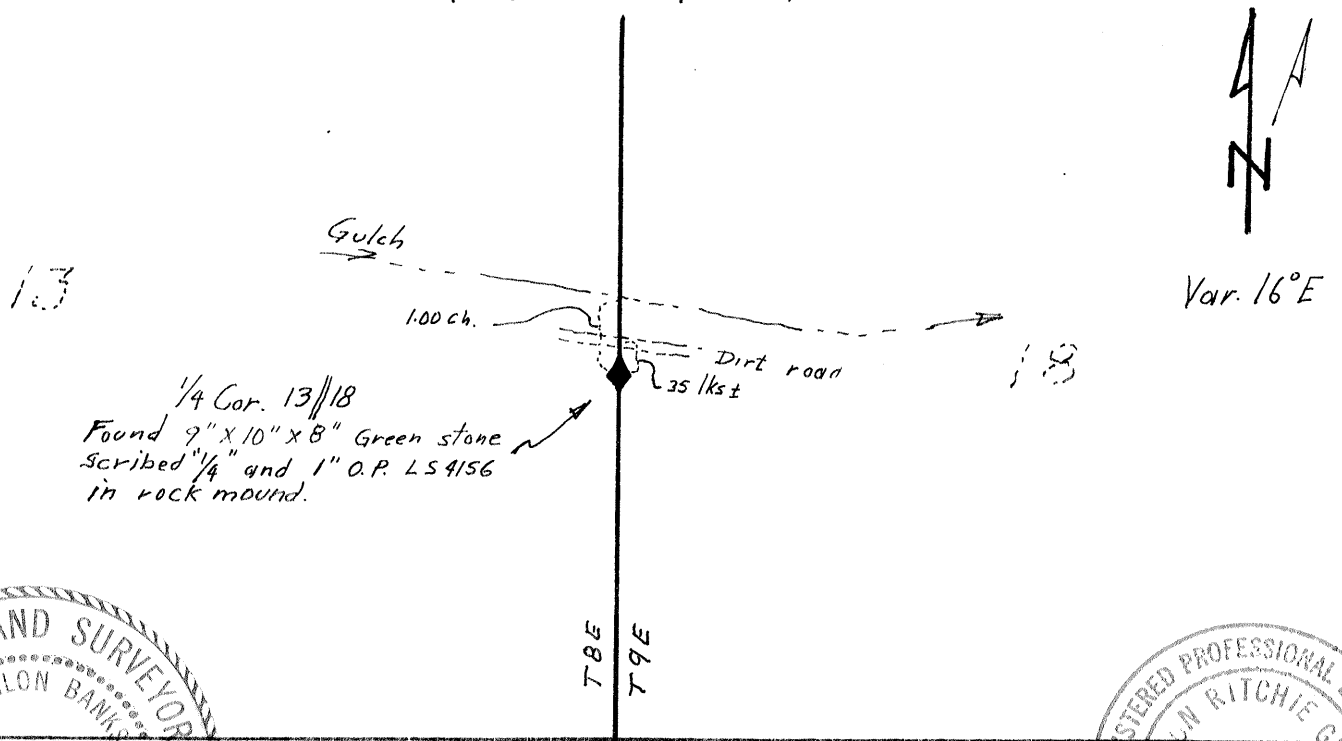
CORNER — LEFT AS FOUND FOUND AND TAGGED REESTABLISHED OBLITERATED CORNER REBUILT

PHYSICAL DESCRIPTION OF CORNER FOUND; EVIDENCE AND METHOD USED TO IDENTIFY OR REESTABLISH
 Found 9" x 10" x 8" green stone in rock mound scribed "1/4". Mound also has 1" O.D. pipe with plastic plug stamped L S 4156. This green stone is indicated in Field Book #LB 55, Miller & Lux, Inc., pages 26 & 80 by H. J. Pfeiffer, L S 831, December 16, 1916.

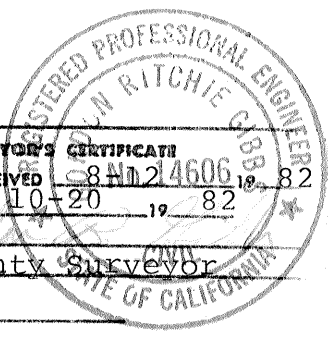
PHYSICAL DESCRIPTION OF MONUMENTS REBUILT OR PERPETUATED
 Rebuilt rock mound with the green stone on the southeast side of the found 1" O.D. pipe with the marks toward the pipe.

CALIFORNIA COORDINATE SYSTEM ORDER: FIRST SECOND THIRD
 STATIONS USED: NGS (USC & GS) STATE COUNTY OTHER STATION _____ STATION _____
 ZONE _____ ELEVATION 1150± NORTHINGS (Y) _____ EASTINGS (X) _____

SKETCH: (Include reference tie or witness points, remarks and topo of area)



SURVEYOR'S CERTIFICATE
 THIS CORNER RECORD WAS PREPARED BY ME OR UNDER MY DIRECTION IN CONFORMANCE WITH THE LAND SURVEYORS ACT ON August 12, 1982
 SIGNED: Homer Banks Jr.
 L.S. or R.C.E. No. LS 3279



COUNTY SURVEYOR'S CERTIFICATE
 THE CORNER RECORD WAS RECEIVED 8-11-82 AND EXAMINED AND FILED 10-20-82
 BY: _____ TITLE: County Surveyor
 DOCUMENT No. 2807
 STATEMENT ON BACK OF SHEET YES NO

SEAL

The filing of this Corner Record was delayed pending a Field review September 28, 29 with the agreement of all parties.

This corner is on the same location as corner "M" as shown and described on Parcel Map Vol. 45, Pgs. 45 & 46.

