

CORNER RECORD

COUNTY OF Merced T. 12 S R. 8 E Mt. Diablo MERIDIAN CALIFORNIA
 CORNER TYPE: GOVT. CORNER MEANDER RANCHO CONTROL OTHER
 CORNER IDENTIFICATION — DATE OF VISIT June 25, 1982



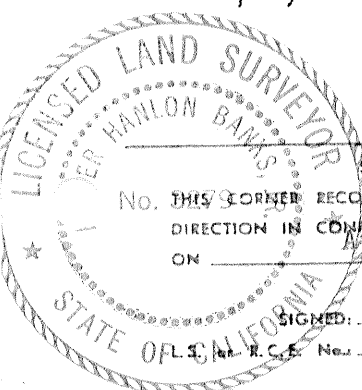
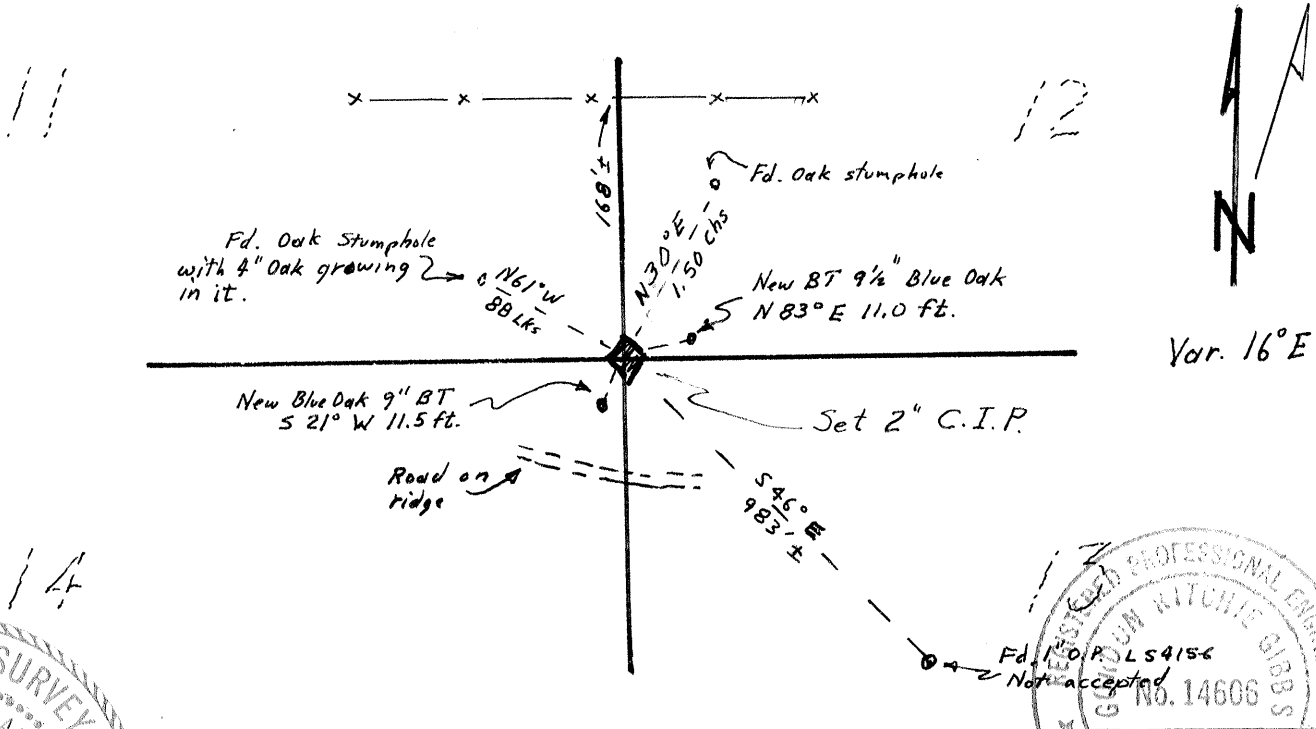
CORNER — LEFT AS FOUND FOUND AND TAGGED REESTABLISHED OBLITERATED CORNER RESULT

PHYSICAL DESCRIPTION OF CORNER FOUND; EVIDENCE AND METHOD USED TO IDENTIFY OR REESTABLISH
 Found location of original corner by retracing from the N, S, and E. From which the stumpholes of the bearing trees were found and identified. The rocks from the mound were found and reassembled.

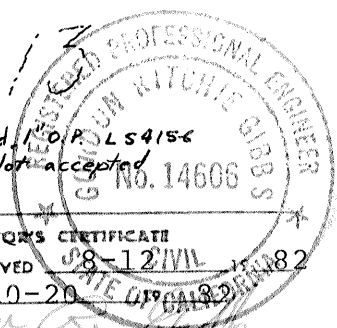
PHYSICAL DESCRIPTION OF MONUMENTS RESULT OR PERPETUATED
 Set 2" C. I. P. from stumpholes of original bearing trees. From which a new BT, a Blue Oak 9 1/2" dia. scribed "S 12 BT" bears N 83° E 11 feet; and another new BT, a Blue Oak 9" dia. scribed "S 14 BT" bears S 21° W 11.5 feet. Made a rock mound around the pipe. Stamped

CALIFORNIA COORDINATE SYSTEM ORDER: FIRST SECOND THIRD
 STATIONS USED: NGS (USC & GS) STATE COUNTY OTHER STATION _____ STATION _____
 ZONE _____ ELEVATION 1920 + NORTHINGS (Y) _____ EASTINGS (X) _____

SKETCH: (Include reference tie or witness points, remarks and topo of area)



SURVEYOR'S CERTIFICATE
 No. THIS CORNER RECORD WAS PREPARED BY ME OR UNDER MY DIRECTION IN CONFORMANCE WITH THE LAND SURVEYORS ACT ON August 3 1982
 SIGNED: Homer Banks Jr.
 No. LS 3279



COUNTY SURVEYOR'S CERTIFICATE
 THE CORNER RECORD WAS RECEIVED 08-12/1982 AND EXAMINED AND FILED 10-20-1982
 BY: Gordon Ritchie Gibbs
 TITLE: County Surveyor
 DOCUMENT No. 2807 A
 STATEMENT ON BACK OF SHEET YES NO

SEAL

The filing of this Corner Record was delayed pending a Field review September 28, 29 with the agreement of all parties.

This corner is not on the same location as corner "K" as shown and described on Parcel Map Vol. 45, Pgs. 45 & 46.

