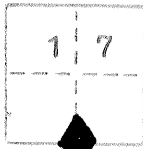


CORNER RECORD

COUNTY OF Merced T. 12 S R. 8 E Mt. Diablo MERIDIAN CALIFORNIA

CORNER TYPE: GOV'T. CORNER  MEANDER  RANCHO  CONTROL  OTHER

CORNER IDENTIFICATION — DATE OF VISIT June 4 19 82



1/4 Corner

17

20

CORNER — LEFT AS FOUND  FOUND AND TAGGED  REESTABLISHED OBLITERATED CORNER  RESULT

PHYSICAL DESCRIPTION OF CORNER FOUND; EVIDENCE AND METHOD USED TO IDENTIFY OR REESTABLISH

Found rock mound in line with fences to north and west. It is 26 feet east of the present fence corner. Found 23" dia. Blue Oak ( Q. Douglasii ) with scribing 2 1/2" deep bearing S70° E 23 1/2 feet ( 36 lks. ) to face of blaze. ( G.L.D S 60° E 33 lks. )

PHYSICAL DESCRIPTION OF MONUMENTS RESULT OR PERPETUATED

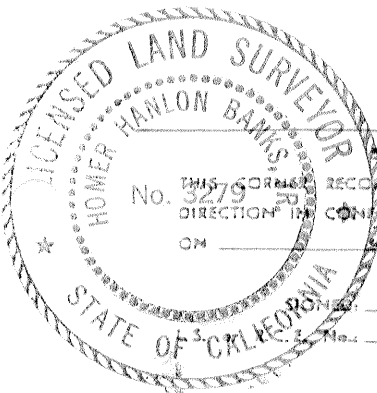
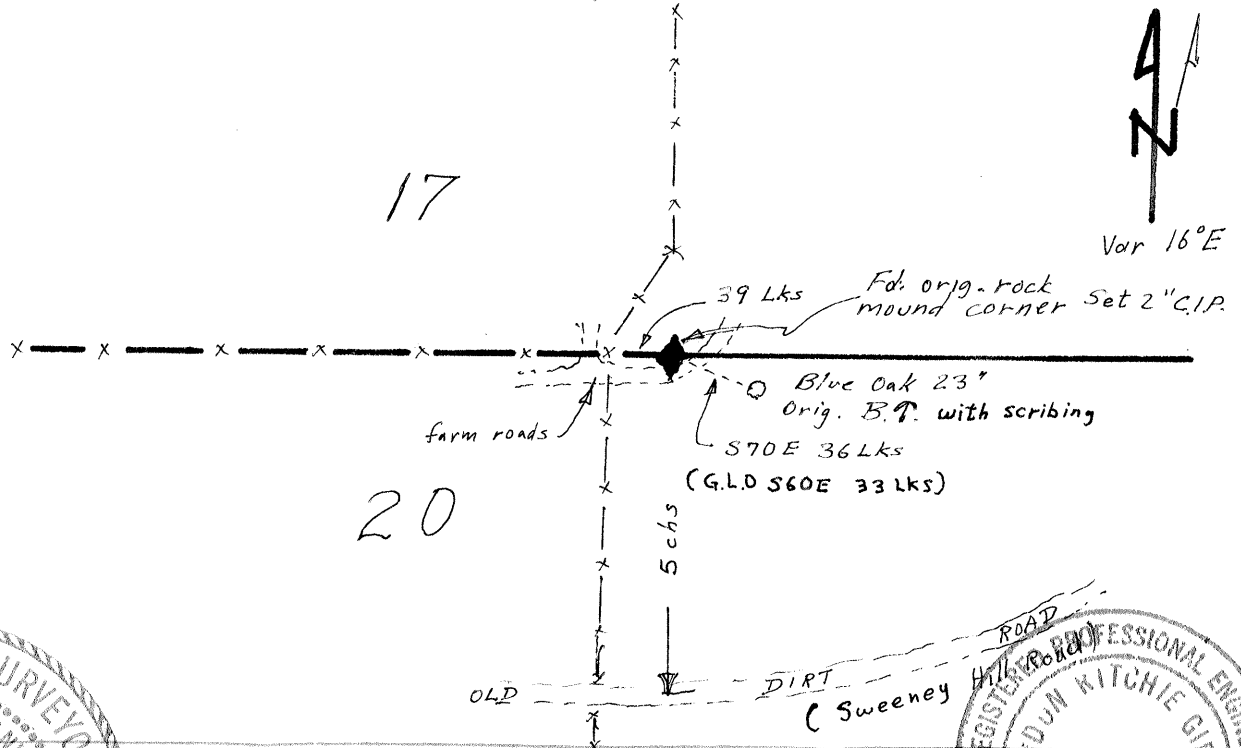
Set 2" C.I.P. in old post hole and rebuilt rock mound.

Stamped pipe →

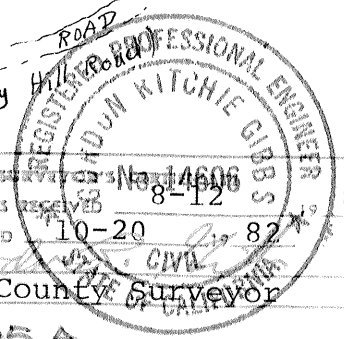


CALIFORNIA COORDINATE SYSTEM ORDER: FIRST  SECOND  THIRD   
 STATIONS USED: NGS (USC & GS)  STATE  COUNTY  OTHER  STATION \_\_\_\_\_ STATION \_\_\_\_\_  
 ZONE \_\_\_\_\_ ELEVATION 1490± NORTHINGS (Y) \_\_\_\_\_ EASTINGS (X) \_\_\_\_\_

SKETCH: (Include reference tie or witness points, remarks and topo of area)



SURVEYOR'S CERTIFICATE  
 THIS CORNER RECORD WAS PREPARED BY ME OR UNDER MY  
 NO. 3279 DIRECTION IN CONFORMANCE WITH THE LAND SURVEYORS ACT  
 ON June 22 1982  
Homer Banks Jr.  
 L.S. 3279



COUNTY SURVEYOR'S RECEIVED  
 THE CORNER RECORD WAS RECEIVED 8-12 1982  
 AND EXAMINED AND FILED 10-20 1982  
 BY [Signature] CIVIL  
 TITLE: County Surveyor  
 DOCUMENT No. 2805 A  
 STATEMENT ON BACK OF SHEET

The filing of this Corner Record was delayed pending a Field Review September 28, 29 with the agreement of all parties.

