

CORNER RECORD

COUNTY OF Merced T. 12 S R. 8 E Mt. Diablo MERIDIAN CALIFORNIA

CORNER TYPE: GOVT. CORNER MEANDER RANCHO CONTROL OTHER
 CORNER IDENTIFICATION — DATE OF VISIT June, 11 1982



15
 1/4 Corner
 22

CORNER — LEFT AS FOUND FOUND AND TAGGED REESTABLISHED OBLITERATED CORNER REBUILT

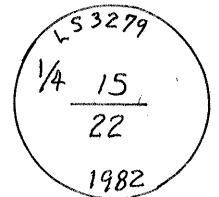
PHYSICAL DESCRIPTION OF CORNER FOUND; EVIDENCE AND METHOD USED TO IDENTIFY OR REESTABLISH

At the location 1 mile south of the N $\frac{1}{4}$ corner of Sect. 15 I found an old axle driven in the east bank of Los Banos Creek. It is my finding that this axle was set to perpetuate the location of the BT S 42° W of the $\frac{1}{4}$ Corner 15/22. This was a common practice when a corner fell in a cultivated grain field as in this case. The site N 42° E 80 lks. of the axle fits the call to Los Banos Cr. and the evidence of the orig. BT N 66° W at 30 lks.

PHYSICAL DESCRIPTION OF MONUMENTS REBUILT OR PERPETUATED

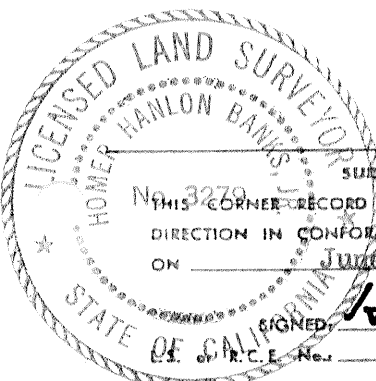
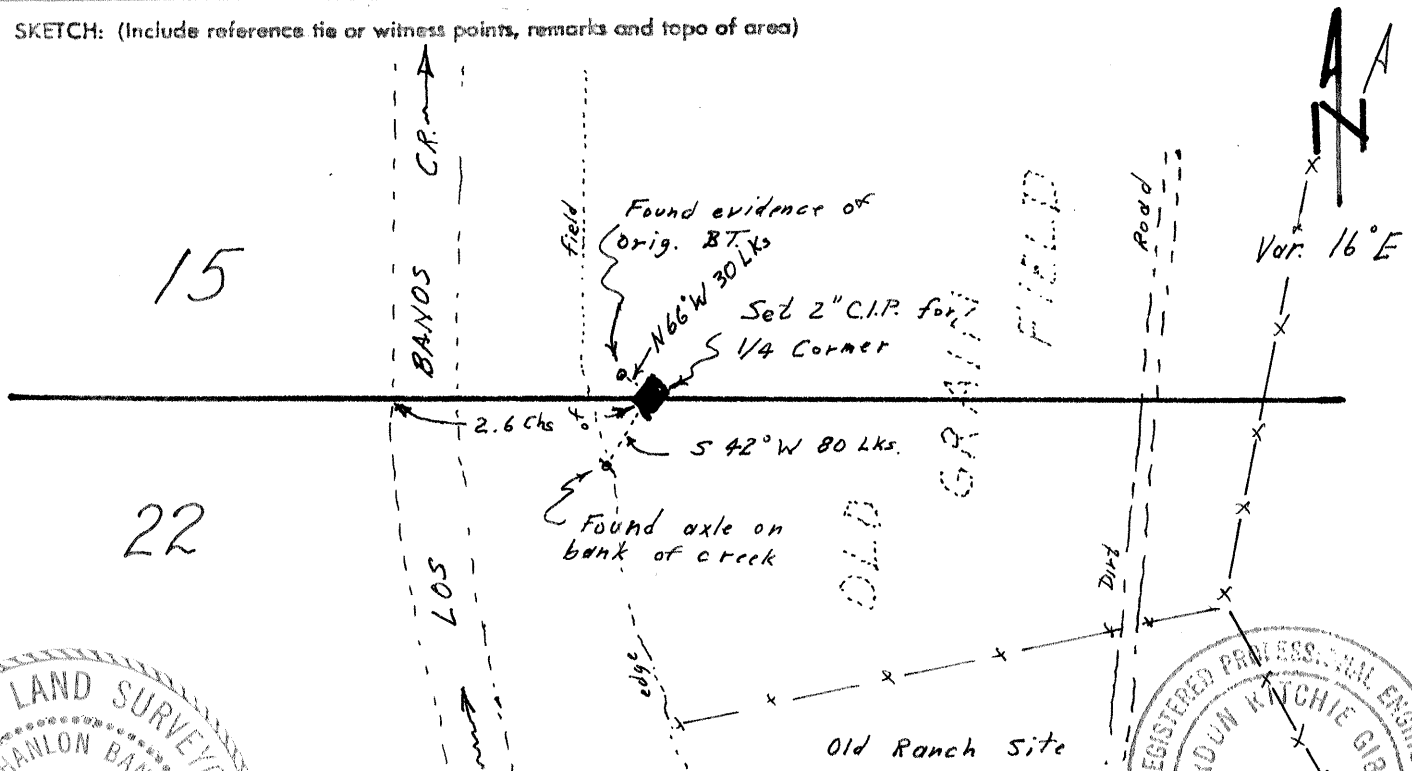
Set 2" C.I.P. N 42° E 80 lks. from the found axle, from which the westerly bank of Los Banos Creek bears West 2.6 chs.

Stamped \rightarrow



CALIFORNIA COORDINATE SYSTEM ORDER: FIRST SECOND THIRD
 STATIONS USED: NGS (USC & GS) STATE COUNTY OTHER STATION _____ STATION _____
 ZONE _____ ELEVATION T150 + NORTHINGS (N) _____ EASTINGS (E) _____

SKETCH: (Include reference tie or witness points, remarks and topo of area)



SURVEYOR'S CERTIFICATE

THIS CORNER RECORD WAS PREPARED BY ME OR UNDER MY DIRECTION IN CONFORMANCE WITH THE LAND SURVEYORS ACT ON June 23, 1982

SIGNED: Homer Banks Jr.
 of R.C.E. No. L.S. 3279

SEAL

COUNTY SURVEYOR'S CERTIFICATE

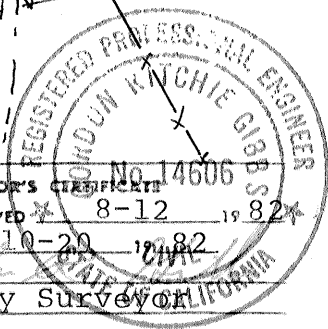
THE CORNER RECORD WAS RECEIVED 8-12 1982 AND EXAMINED AND FILED 10-20 1982

BY: [Signature]
 TITLE: County Surveyor

DOCUMENT No. 2804 B

STATEMENT ON BACK OF SHEET

YES NO



The filing of this Corner Record was delayed pending a Field Review September 28, 29 with the agreement of all parties.

