

CORNER RECORD

COUNTY OF Merced T. 12 S R. 8E Mt. Diablo MERIDIAN CALIFORNIA
 CORNER TYPE: GOVT. CORNER MEANDER RANCHO CONTROL OTHER
 CORNER IDENTIFICATION — DATE OF VISIT June 4 1982



1/4 corner

11

14

CORNER — LEFT AS FOUND FOUND AND TAGGED REESTABLISHED OBLITERATED CORNER RESULT

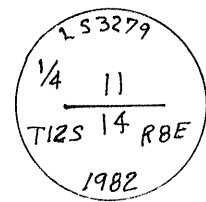
PHYSICAL DESCRIPTION OF CORNER FOUND; EVIDENCE AND METHOD USED TO IDENTIFY OR REESTABLISH

Found original bearing tree in good condition on top of a north slope. The Blue oak is now 19" in dia. with a grown over blaze and bears N 12 E 41 lks. from the corner. No remains of the rock mound were found in the center of a cattle trail where the corner was.

We increment bored the tree to check its' age.

PHYSICAL DESCRIPTION OF MONUMENTS RESULT OR PERPETUATED

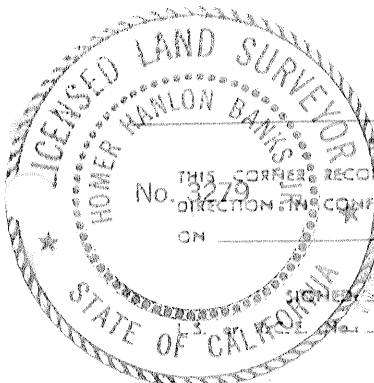
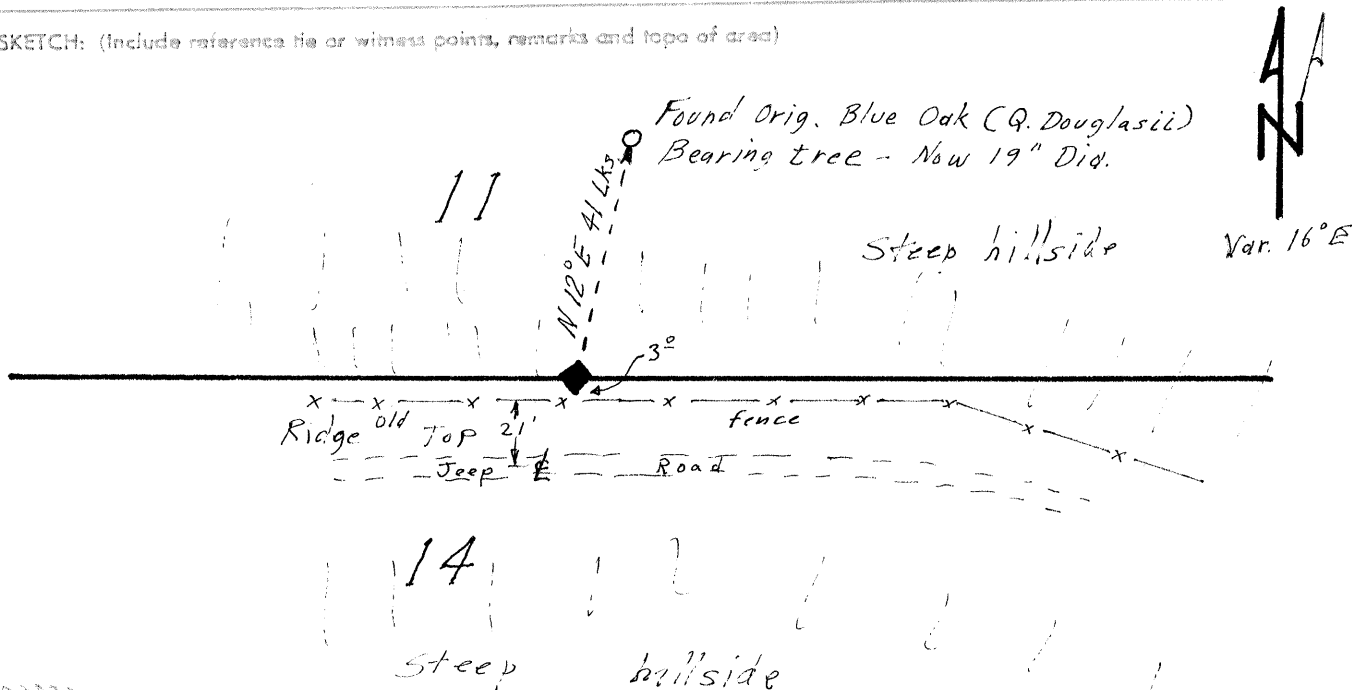
Set 2" C. I. P. and built a rock mound around it in the middle of a cattle trail on the south side of an old fence S 12° W 41 lks. (27') from the original bearing tree.



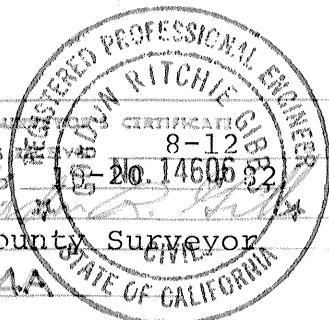
Stamped →

CALIFORNIA COORDINATE SYSTEM ORDER: FIRST SECOND THIRD
 STATIONS USED: NGS (USC & GS) STATE COUNTY OTHER STATION _____ STATION _____
 ZONE _____ ELEVATION 1950 ± NORTHINGS (Y) _____ EASTINGS (X) _____

SKETCH: (Include reference tie or witness points, remarks and topo of area)



SURVEYOR'S CERTIFICATE
 THIS CORNER RECORD WAS PREPARED BY ME OR UNDER MY DIRECTION IN CONFORMANCE WITH THE LAND SURVEYORS ACT ON June 21 1982
 SIGNED Homer Banks Jr.
 No. L. S. 3279



COUNTY SURVEYOR CERTIFICATE
 THE CORNER RECORD WAS RECEIVED AND EXAMINED AND FILED 8-12-82
 BY [Signature]
 TITLE: County Surveyor
 DOCUMENT No. 2804A
 STATEMENT ON BACK OF SHEET YES NO

The filing of this Corner Record was delayed pending a Field Review September 28, 29 with the agreement of all parties.

