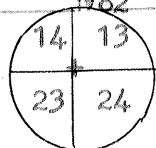


CORNER RECORD

COUNTY OF Merced T. 12 S R. 8 E Mt. Diablo MERIDIAN CALIFORNIA
 CORNER TYPE: GOV'T. CORNER MEANDER RANCHO CONTROL OTHER
 CORNER IDENTIFICATION — DATE OF VISIT June 12, 1982



Section corner



CORNER — LEFT AS FOUND FOUND AND TAGGED REESTABLISHED OBLITERATED CORNER RESULT

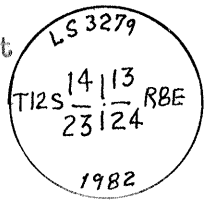
PHYSICAL DESCRIPTION OF CORNER FOUND; EVIDENCE AND METHOD USED TO IDENTIFY OR REESTABLISH

Found original rock mound on top of high hill elev. 1660± with distinct Bearing tree stump hole S60 W 31 links (20.5 ft.) and stump hole with charcoal N 32 E 60 links (39.6 ft.) This corner is approx. 20 chains south of a lone post, and S 45 E of an old fence corner running north and west. (Old ranch corner)
 (SEE Bartlett map dated 1925 of Sweeney Ranch.) This corner is cited in Field Book #LB 55, Miller & Lux Inc. Pg. 24 by H. J. Pfeiffer L S831 in 1918

PHYSICAL DESCRIPTION OF MONUMENTS RESULT OR PERPETUATED

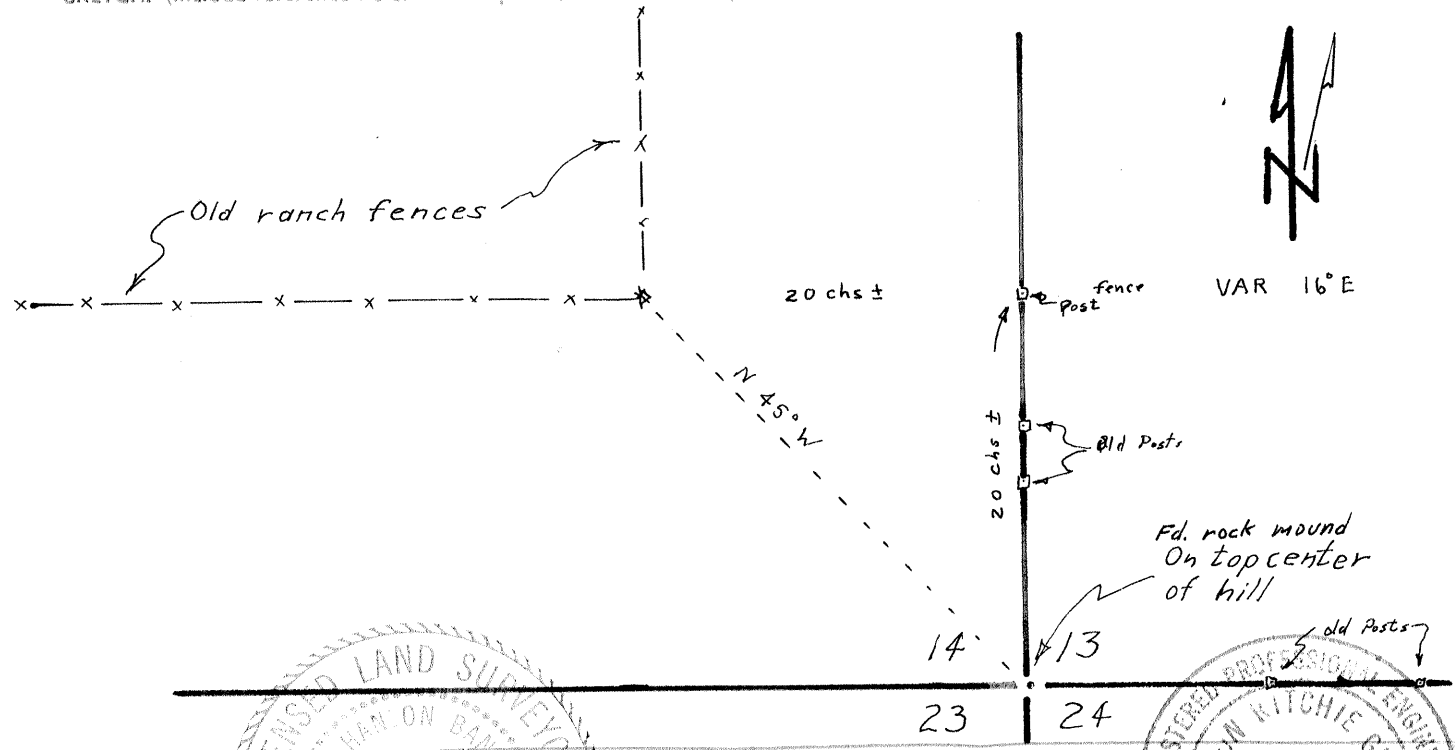
Set a 2" C. I. P. in center of 4 foot dia. rock mound. Old rocks were not disturbed, but new rocks were piled up to hold the pipe.

Stamped →

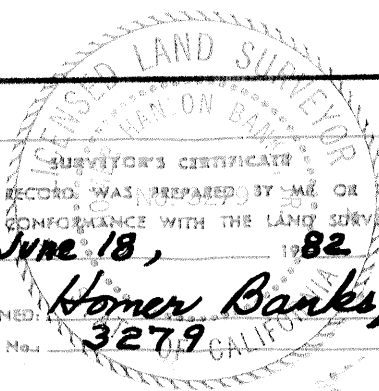


CALIFORNIA COORDINATE SYSTEM ORDER: FIRST SECOND THIRD
 STATIONS USED: MGS (USC & GS) STATE COUNTY OTHER STATION _____ STATION _____
 ZONE _____ ELEVATION 1660 ± NORTHINGS (Y) _____ EASTINGS (X) _____

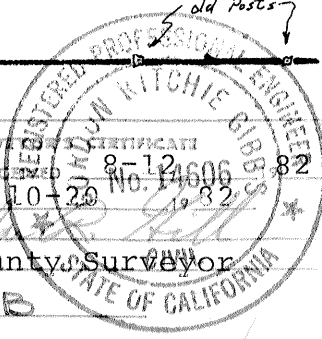
SKETCH: (Include reference tie or witness points, remarks and topo of area)



SURVEYOR'S CERTIFICATE
 THIS CORNER RECORD WAS PREPARED BY ME OR UNDER MY DIRECTION IN CONFORMANCE WITH THE LAND SURVEYORS ACT ON June 18, 1982
 SIGNED: Homer Banks Jr
 L.S. No. 3279 CALIFORNIA



COUNTY SURVEYOR'S CERTIFICATE
 THE CORNER RECORD WAS RECEIVED 8-12-82 AND EXAMINED AND FILED 10-20-82 NO. 14606
 BY: [Signature]
 TITLE: County Surveyor
 DOCUMENT No. 2803B
 STATE OF CALIFORNIA
 STATEMENT ON BACK OF SHEET YES NO



The filing of this Corner Record was delayed pending a Field review September 28, 29 with the agreement of all parties.

