

# CORNER RECORD

COUNTY OF Merced T. 12 S R. 8 E Mt. Diablo MERIDIAN CALIFORNIA  
 CORNER TYPE: GOV'T. CORNER  MEANDER  RANCHO  CONTROL  OTHER   
 CORNER IDENTIFICATION — DATE OF VISIT June 25 1982



1/4 Corner 14 | 13

CORNER — LEFT AS FOUND  FOUND AND TAGGED  REESTABLISHED OBLITERATED CORNER  REBUILT

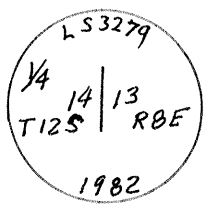
**PHYSICAL DESCRIPTION OF CORNER FOUND; EVIDENCE AND METHOD USED TO IDENTIFY OR REESTABLISH**

Found original rock mound  $\frac{1}{4}$  corner with stump hole containing charcoal from a Blue Oak ( Q. Douglasii ) bearing N 56° W 1.00 chs.  
 This corner lies due North by compass ( Var. 16 E ) from the corner of 14, 13, 23, and 24 on top of a high knoll.

**PHYSICAL DESCRIPTION OF MONUMENTS REBUILT OR PERPETUATED**

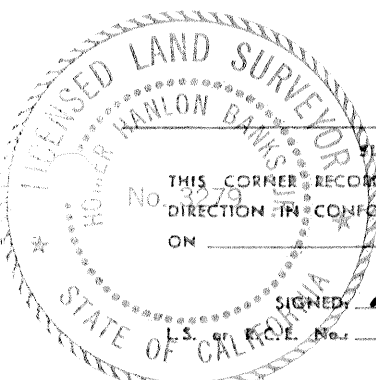
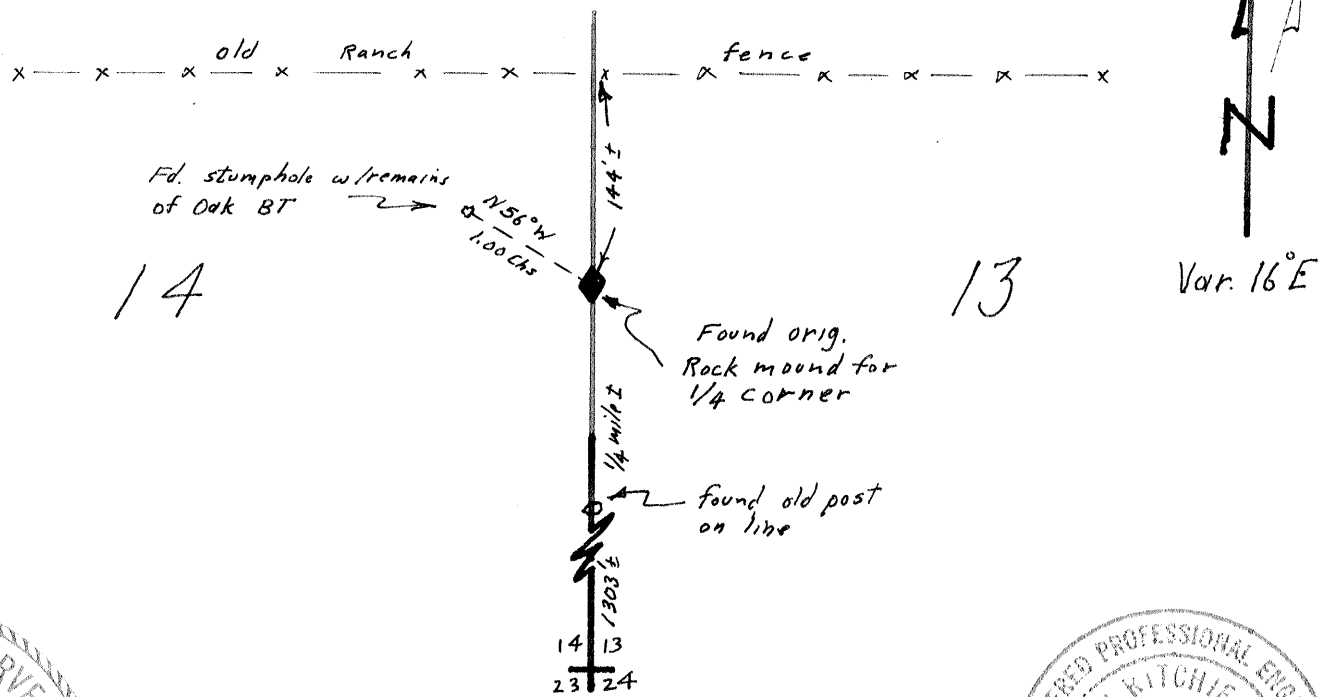
Set 2" C.I.P. in original rock mound and built it up without disturbing the existing remnants of the mound.

Stamped →

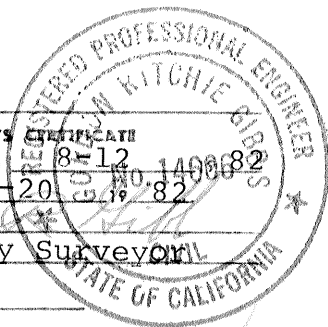


CALIFORNIA COORDINATE SYSTEM ORDER: FIRST  SECOND  THIRD   
 STATIONS USED: NGS (USC & GS)  STATE  COUNTY  OTHER  STATION \_\_\_\_\_ STATION \_\_\_\_\_  
 ZONE \_\_\_\_\_ ELEVATION 1600± NORTHINGS (Y) \_\_\_\_\_ EASTINGS (X) \_\_\_\_\_

**SKETCH: (Include reference tie or witness points, remarks and topo of area)**



**SURVEYOR'S CERTIFICATE**  
 THIS CORNER RECORD WAS PREPARED BY ME OR UNDER MY DIRECTION IN CONFORMANCE WITH THE LAND SURVEYORS ACT ON JUNE 30, 1982  
 SIGNED: Homer Banks Jr.  
 L.S. or R.C.E. No. LS 3279



**COUNTY SURVEYOR'S CERTIFICATE**  
 THE CORNER RECORD WAS RECEIVED 8-12-82 AND EXAMINED AND FILED 10-20-82  
 BY: [Signature]  
 TITLE: County Surveyor  
 DOCUMENT No. 2803A  
 STATEMENT ON BACK OF SHEET YES  NO

SEAL

The filing of this Corner Record was delayed pending a Field review September 28, 29 with the agreement of all parties.

