

# CORNER RECORD

COUNTY OF Merced T. 12 S R. 8 E Mt. Diablo MERIDIAN CALIFORNIA  
 CORNER TYPE: GOVT. CORNER  MEANDER  RANCHO  CONTROL  OTHER   
 CORNER IDENTIFICATION — DATE OF VISIT July 25, 19 82



1/4 Corner 13  
24

CORNER — LEFT AS FOUND  FOUND AND TAGGED  REESTABLISHED OBLITERATED CORNER  RESULT

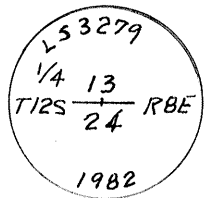
PHYSICAL DESCRIPTION OF CORNER FOUND; EVIDENCE AND METHOD USED TO IDENTIFY OR REESTABLISH

Found ring of rocks and scattered rocks from original corner.

PHYSICAL DESCRIPTION OF MONUMENTS REBUILT OR PERPETUATED

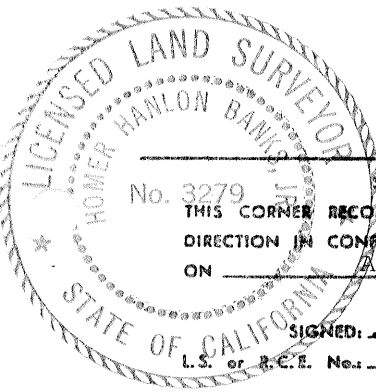
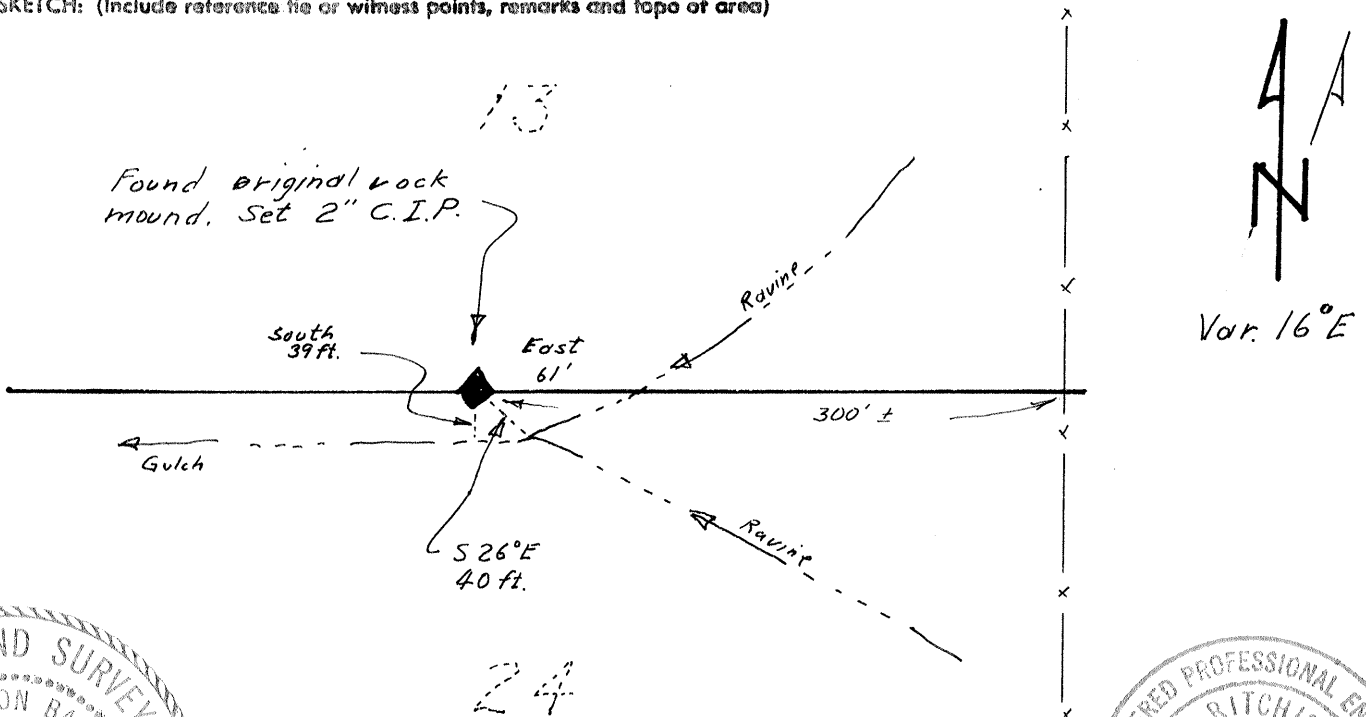
Set 2" C.I.P. in original rock mound.

Stamped



CALIFORNIA COORDINATE SYSTEM ORDER: FIRST  SECOND  THIRD   
 STATIONS USED: NGS (USC & GS)  STATE  COUNTY  OTHER  STATION \_\_\_\_\_ STATION \_\_\_\_\_  
 ZONE \_\_\_\_\_ ELEVATION 1660± NORTHINGS (Y) \_\_\_\_\_ EASTINGS (X) \_\_\_\_\_

SKETCH: (Include reference tie or witness points, remarks and topo of area)

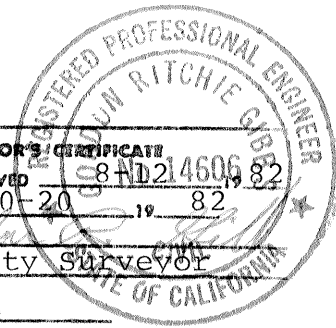


**SURVEYOR'S CERTIFICATE**

No. 3279  
 THIS CORNER RECORD WAS PREPARED BY ME OR UNDER MY DIRECTION IN CONFORMANCE WITH THE LAND SURVEYORS ACT ON August 12, 19 82

SIGNED: Homer Banks Jr.  
 L.S. or P.C.E. No. L S 3279

SEAL



**COUNTY SURVEYOR'S CERTIFICATE**

THE CORNER RECORD WAS RECEIVED 8/12/82 AND EXAMINED AND FILED 10-20 19 82

BY: [Signature]  
 TITLE: County Surveyor

DOCUMENT No. 2802B

STATEMENT ON BACK OF SHEET

YES  NO

The filing of this Corner Record was delayed pending a Field review September 28, 29 with the agreement of all parties.

