

### CORNER RECORD

COUNTY OF Merced T. 12 S R. 8 & 9 Mt. Diablo MERIDIAN CALIFORNIA

CORNER TYPE: GOVT. CORNER  MEANDER  RANCHO  CONTROL  OTHER

CORNER IDENTIFICATION — DATE OF VISIT June 4, 1982



1/4 Corner 12 | 7

CORNER — LEFT AS FOUND  FOUND AND TAGGED  REESTABLISHED OBLITERATED CORNER  RESULT

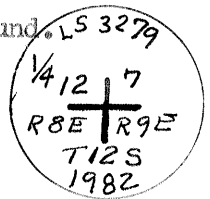
PHYSICAL DESCRIPTION OF CORNER FOUND; EVIDENCE AND METHOD USED TO IDENTIFY OR REESTABLISH

Found stone 12 X 10 X 10 with bearly discernible "4" in rock mound <sup>scribed unit</sup> 3.52 chs north of heavy outcrop of blackledge, bears E & W, and 3.17 chs south of gulch course SE. The 3/4" pipe set S 52° E about 62' by L S 4156 was rejected.

PHYSICAL DESCRIPTION OF MONUMENTS RESULT OR PERPETUATED

Set 2" C. I.P. along north side of 12 X 10 X 10 stone and rebuilt rock mound. Ground slopes NNE.

Stamped

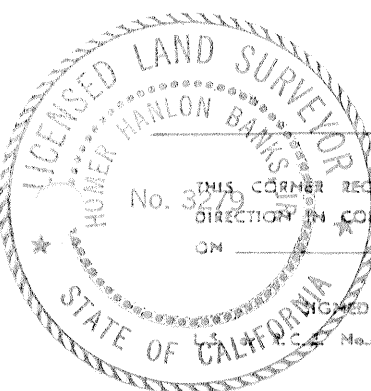
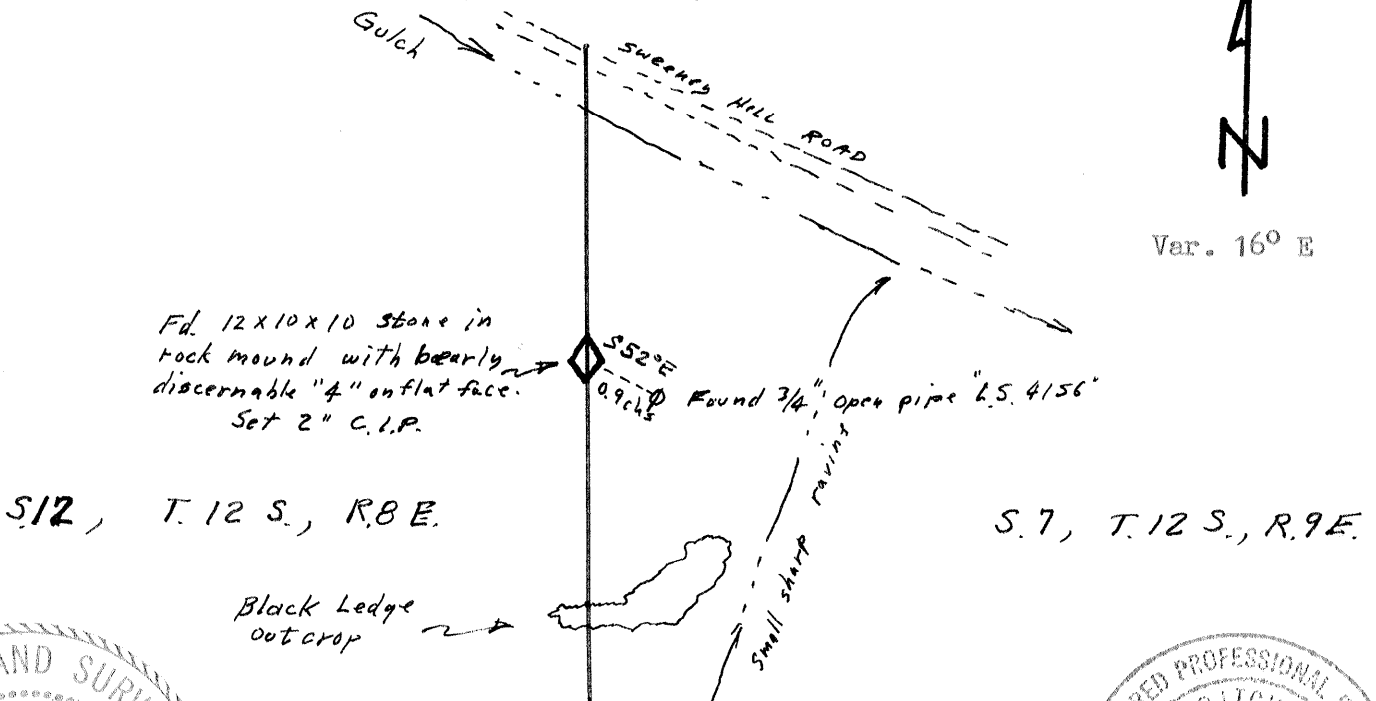


CALIFORNIA COORDINATE SYSTEM ORDER: FIRST  SECOND  THIRD

STATIONS USED: NGS (USC & GS)  STATE  COUNTY  OTHER  STATION \_\_\_\_\_ STATION \_\_\_\_\_

ZONE \_\_\_\_\_ ELEVATION 1280 ± NORTHINGS (Y) \_\_\_\_\_ EASTINGS (X) \_\_\_\_\_

SKETCH: (Include reference tie or witness points, remarks and topo of area)



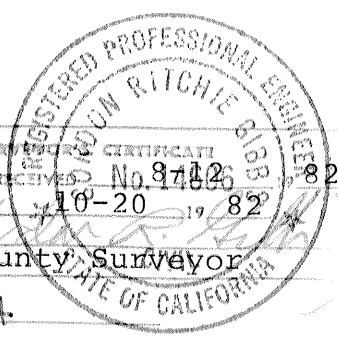
SURVEYOR'S CERTIFICATE

THIS CORNER RECORD WAS PREPARED BY ME OR UNDER MY DIRECTION IN CONFORMANCE WITH THE LAND SURVEYORS ACT

ON June 21, 1982

SIGNED: Homer Banks Jr.

P.C. No. L S 3279



COUNTY SURVEYOR'S CERTIFICATE

THE CORNER RECORD WAS RECEIVED, EXAMINED AND FILED

BY: \_\_\_\_\_

TITLE: County Surveyor

DOCUMENT No. 2194

SEAL

STATEMENT ON BACK OF SHEET YES  NO

The filing of this Corner Record was delayed pending a Field review September 28, 29 with the agreement of all parties.

This corner is not on the same location as Corner "H" as shown and described on Parcel Map Vol. 45 Pgs. 45 & 46.

