

# CORNER RECORD

COUNTY OF Merced T. 12 S E. 8 E Mt. Diablo MERIDIAN CALIFORNIA  
 CORNER TYPE: GOVT. CORNER  MEANDER  RANCHO  CONTROL  OTHER   
 CORNER IDENTIFICATION — DATE OF VISIT June 5, 1982



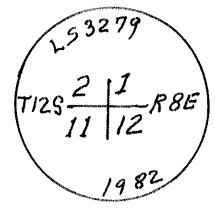
Section Corner 

2	1
11	12

CORNER — LEFT AS FOUND  FOUND AND TAGGED  REESTABLISHED OBLITERATED CORNER  REBUILT

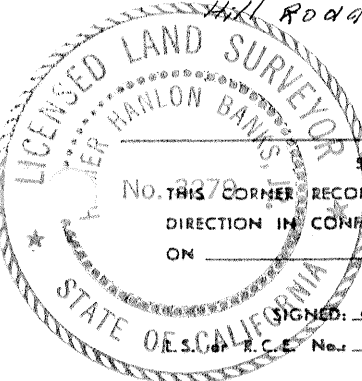
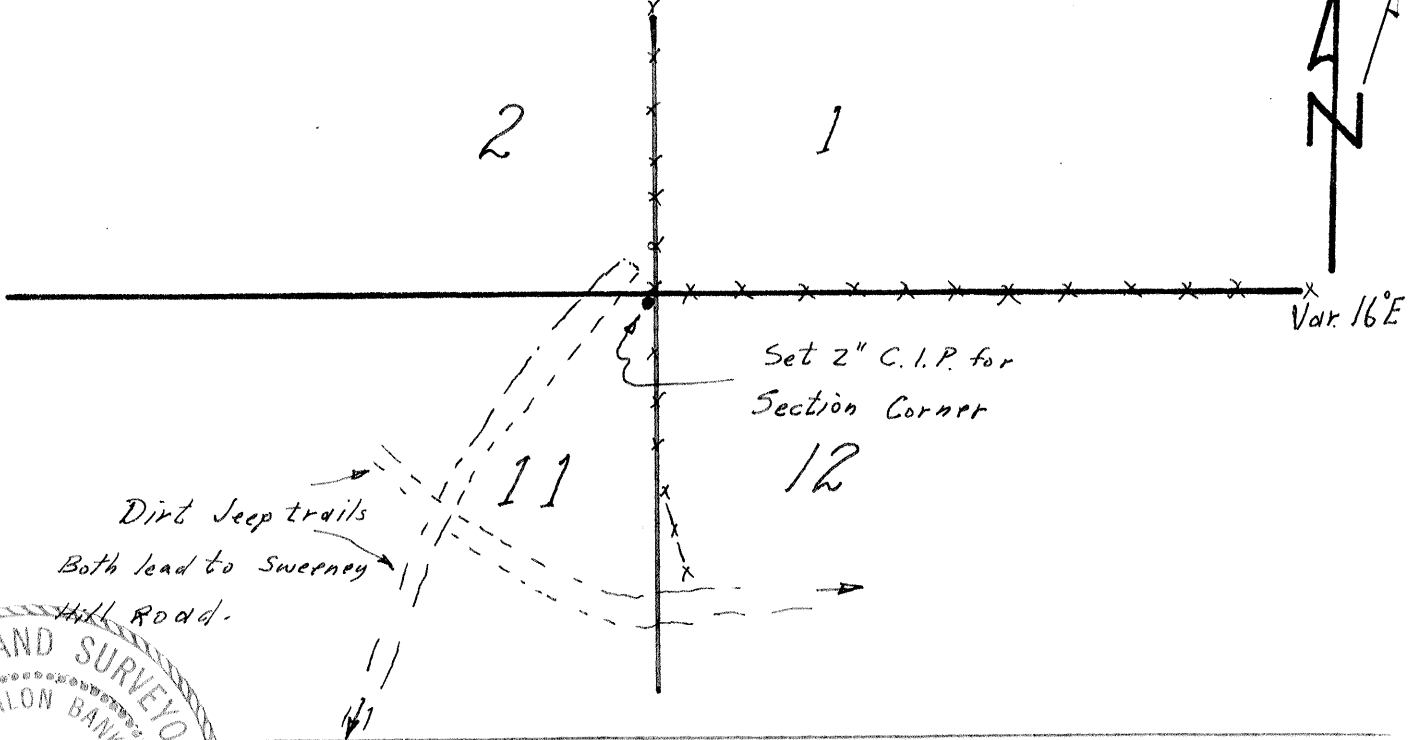
PHYSICAL DESCRIPTION OF CORNER FOUND; EVIDENCE AND METHOD USED TO IDENTIFY OR REESTABLISH  
 Found an old ranch fence corner that runs many miles to the north and also east to the Range line at the SE corner of Sect. 1 and a corner of a Rancho. It is my finding that this fence corner is the perpetuation of the location of the original corner set in 1875. (See Bartlett 1925 Map of the Sweeney Ranch.)  
 The rock mound shown on PM 45-46, Cor. "D" does not fit the lines of occupation nor the rules of reasonable bearing and distance.

PHYSICAL DESCRIPTION OF MONUMENTS REBUILT OR PERPETUATED  
 Set 2" C.I.P. at the SW corner of the 7" X 7" corner fence post. This corner is located at the end of a dirt road and on a narrow ridge.



CALIFORNIA COORDINATE SYSTEM ORDER: FIRST  SECOND  THIRD   
 STATIONS USED: NGS (USC & GS)  STATE  COUNTY  OTHER  STATION \_\_\_\_\_ STATION \_\_\_\_\_  
 ZONE \_\_\_\_\_ ELEVATION 1700 + NORTHINGS (Y) \_\_\_\_\_ EASTINGS (X) \_\_\_\_\_

SKETCH: (Include reference tie or witness points, remarks and topo of area)



SURVEYOR'S CERTIFICATE  
 No. 2794A CORNER RECORD WAS PREPARED BY ME OR UNDER MY DIRECTION IN CONFORMANCE WITH THE LAND SURVEYORS ACT ON June 23 19 82  
 SIGNED: Homer Banks Jr.  
 R.C.E. No. L.S. 3279

COUNTY SURVEYOR'S CERTIFICATE  
 THE CORNER RECORD WAS RECEIVED Aug. 12, 83 AND EXAMINED AND FILED May 25, 1983  
 BY: [Signature]  
 TITLE: County Surveyor  
 DOCUMENT No. 2794A

REPORTED RECOVERIES ARE IN DISPUT WITH PARCEL MAP FILED  
SEPTEMBER 25, 1981 IN BOOK 45 OF PARCEL MAPS AT PAGES  
45-46.