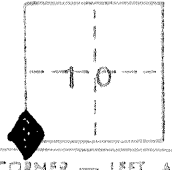


CORNER RECORD

COUNTY OF Merced T. 12 S R. 8E Mt. Diablo MERIDIAN CALIFORNIA
 CORNER TYPE: GOVT. CORNER MEANDER RANCHO CONTROL OTHER
 CORNER IDENTIFICATION — DATE OF VISIT June 2, 1982



Section Corner

9	10
16	15

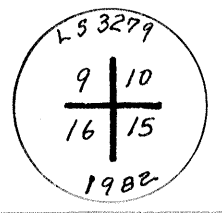
CORNER — LEFT AS FOUND FOUND AND TAGGED REESTABLISHED OBLITERATED CORNER RESULT
 PHYSICAL DESCRIPTION OF CORNER FOUND; EVIDENCE AND METHOD USED TO IDENTIFY OR REESTABLISH

Found old fence corner, fence runs west, north, and has a livestock gathering loop with a gate and then continues south. This corner was a mound of earth in the GLO notes and there are few if any rocks in this immediate area which is approx. 21½ chains west of Los Banos Creek. It is my finding that this fence corner is the perpetuation of the original Section Corner set in 1875.

PHYSICAL DESCRIPTION OF MONUMENTS RESULT OR PERPETUATED

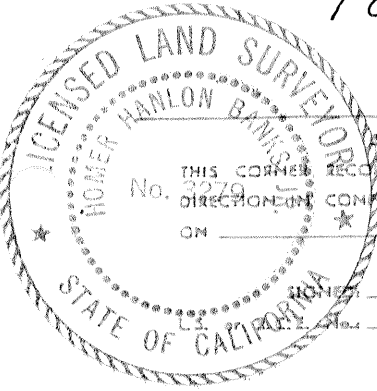
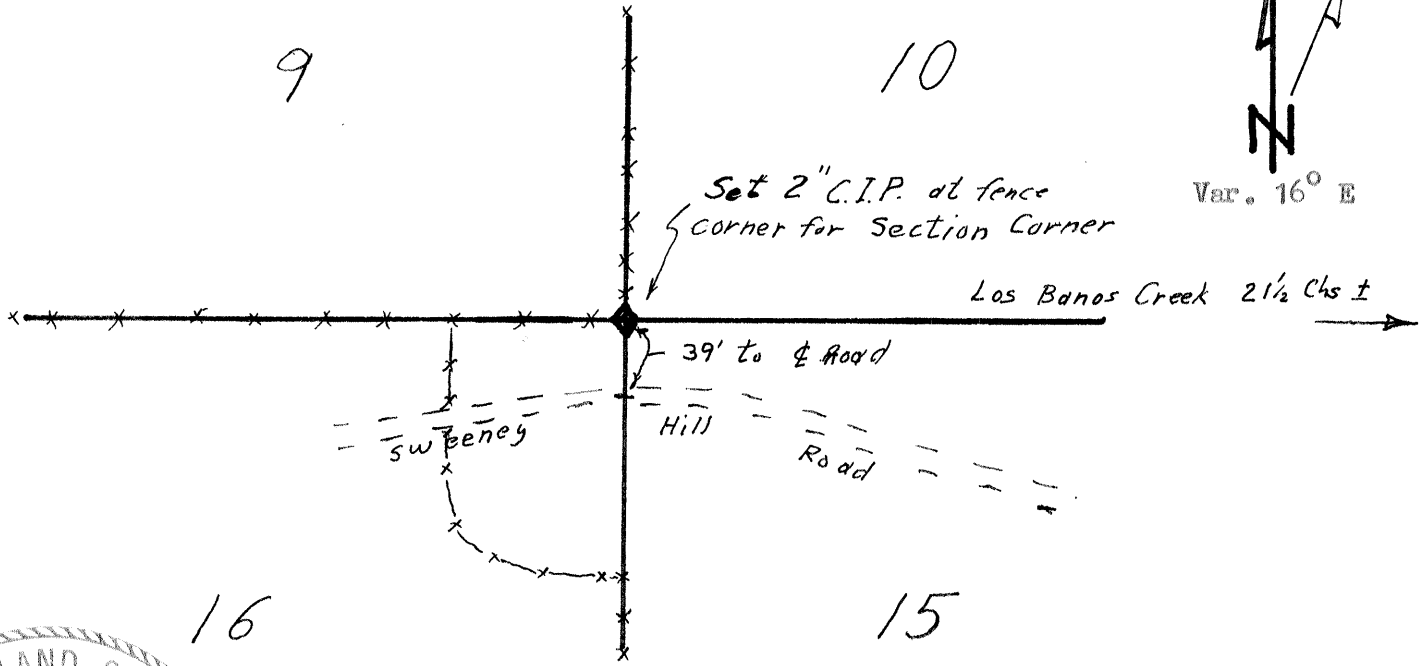
Set 2" C.I.P. at fence corner.

Stamped →



CALIFORNIA COORDINATE SYSTEM ORDER: FIRST SECOND THIRD
 STATIONS USED: NGS (USC & GS) STATE COUNTY OTHER STATION _____ STATION _____
 ZONE _____ ELEVATION 1230 ± NORTHINGS (Y) _____ EASTINGS (X) _____

SKETCH: (Include reference tie or witness points, remarks and topo of area)



SURVEYOR'S CERTIFICATE
 THIS CORNER RECORD WAS PREPARED BY ME OR UNDER MY DIRECTION IN COMPLIANCE WITH THE LAND SURVEYORS ACT ON June 22, 1982
Homer Banks Jr.
 L.S. 3279

COUNTY SURVEYOR'S CERTIFICATE
 THE CORNER RECORD WAS RECEIVED Aug. 12, 1983 AND EXAMINED AND FILED May 25, 1983
 BY [Signature]
 TITLE: County Surveyor
 DOCUMENT No. 2793B

SEAL

STATEMENT ON BACK OF SHEET YES NO

REPORTED RECOVERIES ARE IN DISPUT WITH PARCEL MAP FILED
SEPTEMBER 25, 1981 IN BOOK 45 OF PARCEL MAPS AT PAGES 45-46,
AND WITH RECORD OF SURVEY FILED FEBRUARY 16, 1982 IN BOOK 19
AT PAGE 34 OF SURVEYS.